

Dodge® StratoLink™ D71 Disc Couplings D71-850-105842-D Supplement Instruction Manual

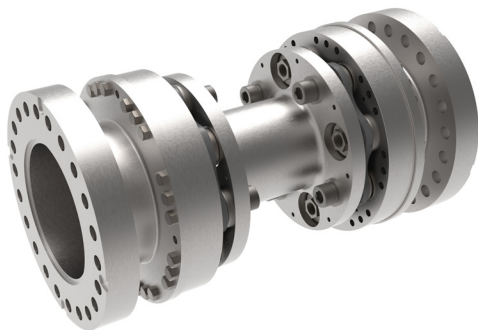
These instructions must be read thoroughly before installation or operation. This instruction manual was accurate at the time of printing. Please see dodgeindustrial.com for updated instruction manuals.

WARNING: To ensure the drive is not unexpectedly started, turn off and lock-out or tag power source before proceeding. Failure to observe these precautions could result in bodily injury.

WARNING: All products over 25 kg (55 lbs) are noted on the shipping package. Proper lifting practices are required for these products.

INTRODUCTION

This instruction manual is to be used in accordance with both the standard installation and safety practices specified in the Dodge MN4078 StratoLink D71 disc coupling instruction manual and DODGE-D71-850-105842-D coupling drawing. This instruction supplement is intended to inform installation practices and installation limits that are specific to this coupling design. Safety and warning notices in the standard installation manual MN4078 must be followed to ensure safe and reliable operation.



WARNING: Because of the possible danger to person(s) or property from accidents which may result from the improper use of products, it is important that correct procedures be followed. Products must be used in accordance with the engineering information specified in the catalog. Proper installation, maintenance and operation procedures must be observed. The instructions in the instruction manuals must be followed. Inspections should be made as necessary to assure safe operation under prevailing conditions. Proper guards and other suitable safety devices or procedures as may be desirable or as may be specified in safety codes should be provided, and are neither provided by Dodge nor are the responsibility of Dodge. This unit and its associated equipment must be installed, adjusted and maintained by qualified personnel who are familiar with the construction and operation of all equipment in the system and the potential hazards involved. When risk to persons or property may be involved, a holding device must be an integral part of the driven equipment beyond the speed reducer output shaft.

The major components for installation are shown in Figure 1. The center member assembly is ready for installation with the disc pack hardware tightened to the specification of 3,230 ft-lbs during assembly and does not need to be disassembled or re-torqued when installing this coupling on the equipment. The two pilot adapters are to be removed from the center member assembly prior to installation. Once removed, fully install each pilot adapter on the connected equipment using the original equipment manufacturer procedure.

Both pilot adapters are supplied with pilots to achieve a transitional fit for mating with the connected equipment flanges as well as the center member assembly adapters. Care must be taken to maintain collinearity when fitting these components together as they may have slight interference and resistance to fully seat the pilot. Do not use a hammer to drive the fit together, instead use the hardware to draw the components into each other in a uniform pattern around the bolt circle.

NOTE: Hardware to mount the pilot adapters to the connected equipment is not supplied with the coupling. Mounting bolt circle dimensions and location were specified to the coupling manufacturer at time of order.

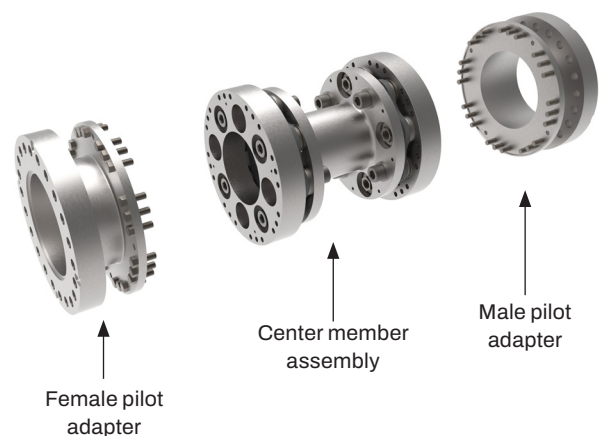


Figure 1: D71-850-105842-D Installation Components

ALIGNMENT

Table 1 references the installation alignment limits for the StratoLink D71-850-105842-D coupling. Measurement techniques and diagrams showing these misalignment limits are referenced in the MN4078 StratoLink D71 disc coupling instruction manual.

Table 1: Alignment Values											
Coupling Size	Hub Flange Diameter		DBSE STD "C"	Installation Alignment Limits**							
				Parallel Misalignment				Angular Misalignment		Axial Misalignment +/-	
	(in)	(mm)		(in)	TIR (in)	TIR (mm)	P (in)**	P (mm)**	(in)	(mm)	(in)
850-8	22.56	573	27.75	0.320	0.81	0.016	0.41	0.033	0.83	0.150	3.81

* Parallel misalignment is measured by rotating the hubs with a dial indicator on the outside hub diameter

** Parallel offset, "P", is equivalent to one-half of the TIR measurement using dial indicators

Table 2 references the allowable disc pack gap tolerance, or "N" dimension, to be used as a final check. Using a set of calipers, measure the distance "N" at four places, 90 degrees apart. If the measured disc gap is outside of the acceptable limits, remove the center member assembly and verify that the distance between shaft ends (DBSE), or "C" dimension, are correct, and that parallel, axial, and angular alignment is within allowable limits. Repeat alignment and installation of the center member assembly until the "N" dimensions are within allowable limits.

Table 2: Misalignment Check "N" Dimension						
Coupling Size	Hub Flange Diameter		"N" Dimension (Gap Between Hub Flange and Center Member Flange)			
	(in)	(mm)	Min (in)	Max (in)	Min (mm)	Max (mm)
850-8	22.56	573	2.082	2.157	52.87	54.78

REMOVAL FROM EQUIPMENT

Removal of the coupling from the equipment begins with removing the center member assembly from the end adapters. Start by supporting the center member assembly using lifting straps around the center member, then remove the (48) hex-head cap screws that connect the end adapters to the center member assembly. Next use the (8) collapsing bolts to pull the center member adapters (BOM item 3) towards the center member to clear the center member adapters from the piloted end adapters (BOM items 7 and 9) which will free the center member assembly. Lastly, to remove the end adapters from the connected equipment flanges, each end adapter is supplied with four key slots on each adapter to use as a pry location to push the adapter free from the mating equipment end flanges. Figure 2 shows the location and detail of the key slots.

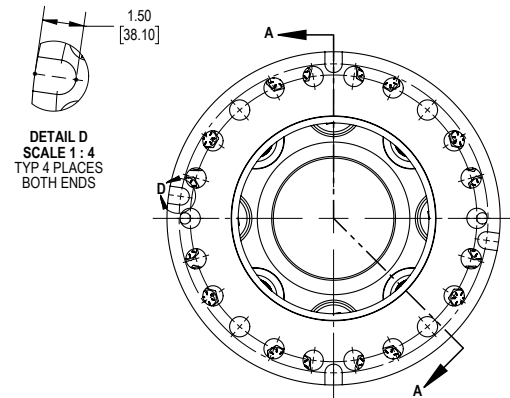


Figure 2: Detail D Shows Adapter Key

Dodge Industrial, Inc.
 1061 Holland Road
 Simpsonville, SC 29681
 +1 864 297 4800

