

Harsh Duty™

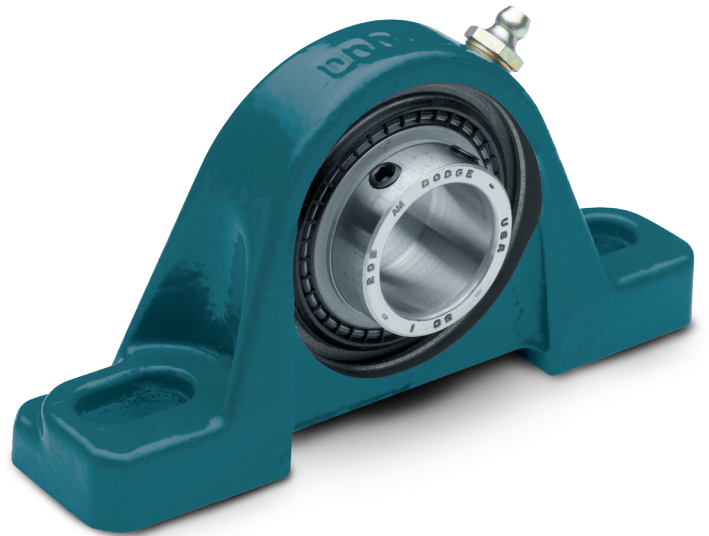
The strongest line of defense

Harsh Duty mounted ball bearings are engineered for the toughest industrial applications, delivering extended service life, long-lasting performance, and maximum equipment uptime in demanding environments.

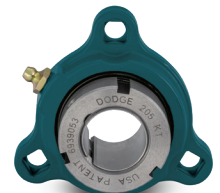
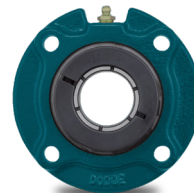
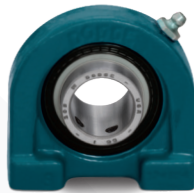
Designed with the QuadGuard sealing system and patented Maxlife cage, Harsh Duty ball bearings protect against contamination while maintaining clean lubrication for reliable, long-term performance in demanding applications.

Premium synthetic grease

Harsh Duty mounted ball bearings use premium synthetic grease to provide low operating temperatures, extend grease life, and maximize time between re-lubrication.



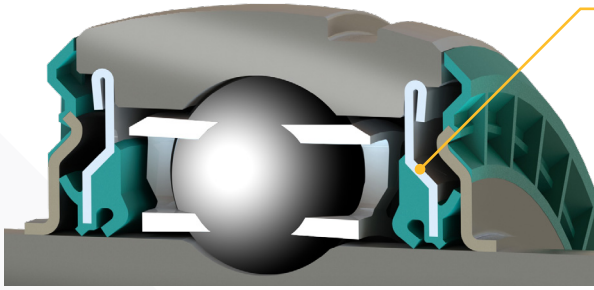
Shaft attachment styles



Housing styles	Set screw (SCED)	Eccentric collar (SXRED)	Concentric collar (DLED)	Concentric collar (GTED)
Pillow block	X	X	X	X
Two-bolt flange	X	X	X	X
Four-bolt flange	X	X	X	X
Tapped base	X	X	X	X
Piloted flange	X		X	X
Wide slot take-up	X	X	X	X
Narrow slot take-up	X			X

Harsh Duty mounted ball bearings

Optimized lubrication retention and contamination prevention for long-lasting performance

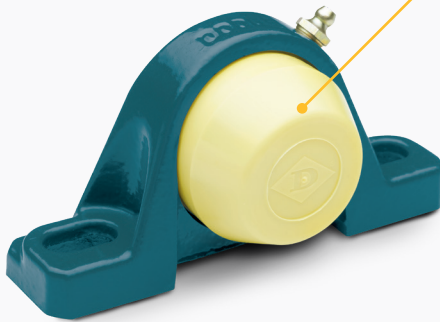
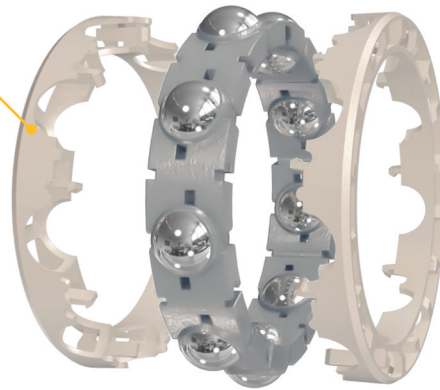


QuadGuard sealing system

- Prevents contamination and maintains clean grease
- Triple-lip seal with two contact points on the inner ring and one contact point on the inner flinger surface
- Rubberized flinger provides additional protection from solid particulate contamination

Maxlife cage

- Two-piece design that creates a grease compartment around each of the ball elements
- Compartments allow constant grease contact with ball elements to prevent wear and minimize friction that causes heat
- Patented cage holds grease and prevents washouts in extremely wet conditions, decreasing the need for frequent re-lubrication



Snap-on safety end covers

- Creates safe work environments around operating equipment and protects the bearing from contamination
- Made of polymer material to withstand tough environments
- Housing designed with groove to firmly secure cover
- End covers provided in OSHA safety yellow for additional protection