

Torque-Arm (TXT-E) and Torque-Arm II (TA II) Reliability Kits

Instruction Manual

These instructions must be read thoroughly before installation or operation. This instruction manual was accurate at the time of printing. Please see dodgeindustrial.com for updated instruction manuals.

WARNING: To ensure the drive is not unexpectedly started, turn off and lock-out or tag power source before proceeding. Failure to observe these precautions could result in bodily injury.

WARNING: All products over 25 kg (55 lbs) are noted on the shipping package. Proper lifting practices are required for these products.

INTRODUCTION

The TXT-E and TA II Reliability Kits are accessories designed to improve asset reliability, simplify maintenance, and provide the user with an enhanced ability to understand the health of their installed asset. The kit is currently available for standard position B mounting of the gearbox. Standard motor mounts and belt guards can be used with these reliability kits as laid out in this manual. The Level 1 Kit includes: E-Z drain, oil sampling pitot tube, extended oil sight tube, Hydra-Lock breather, split bushing covers, and all hardware/piping components to provide a closed loop system of operation.

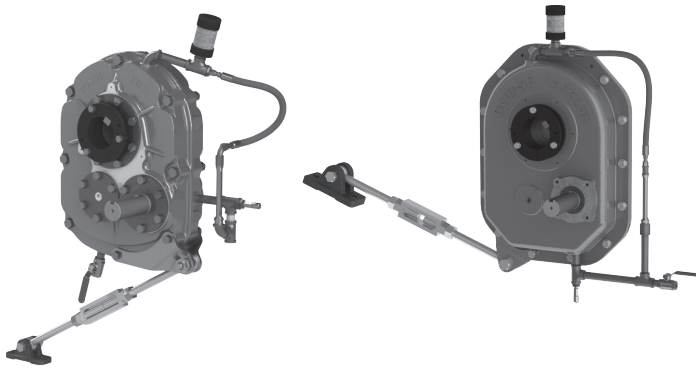


Figure 1 – TXT-E & TA II Reliability kits

WARNING: Because of the possible danger to person(s) or property from accidents which may result from the improper use of products, it is important that correct procedures be followed. Products must be used in accordance with the engineering information specified in the catalog. Proper installation, maintenance and operation procedures must be observed. The instructions in the instruction manuals must be followed. Inspections should be made as necessary to assure safe operation under prevailing conditions. Proper guards and other suitable safety devices or procedures as may be desirable or as may be specified in safety codes should be provided, and are neither provided by Dodge® nor are the responsibility of Dodge. This unit and its associated equipment must be installed, adjusted and maintained by qualified personnel who are familiar with the construction and operation of all equipment in the system and the potential hazards involved. When risk to persons or property may be involved, a holding device must be an integral part of the driven equipment beyond the speed reducer output shaft.

INSTALLATION SCHEMATICS

For installation schematics, go to the back of this manual and review drawings from Table 1.

Table 1 – List of installation schematics		
Size	Kit Part Number	Page
TXT5	TXT5RELKIT	5
TXT6	TXT6RELKIT	5
TXT7	TXT7RELKIT	6
TXT8	TXT8RELKIT	7
TXT9	TXT9RELKIT	8
TXT10	TXT10RELKIT	9
TXT12	TXT12RELKIT	10
TA4207H	TA4RELKIT	11
TA5215H	TA5RELKIT	12
TA6307H	TA6RELKIT	13
TA7315H	TA7RELKIT	14
TA8407H	TA8RELKIT	15
TA9415H	TA9RELKIT	16
TA10507H	TA10RELKIT	17
TA12608H	TA12RELKIT	18

INSTALLATION INSTRUCTIONS

Notes:

- Use pipe joint compound on all threaded connections that do not already have sealant on them.
- Tools required for installation: a combination of allen wrenches, pipe wrenches, crescent wrenches, and/or channel lock pliers to remove plugs and install pipe fitting from the kit. Tighten all connections so they are oil-tight.
- Care must be taken when installing the brass sight tube and hose. Overtightening the fittings on the sight tube can cause damage.
- If the gearbox is already in service, the oil must be drained before installing the reliability kit components. There may be some pipe fittings from this kit that are difficult to install with other accessories already installed. If possible, install all reliability kit components before installing additional accessories.

INSTALLING E-Z DRAIN COMPONENTS

The kit contains fittings to extend the E-Z drain to the lowest point of the gearbox. The drain is designed to be installed like the drawings at the back of this manual with the tie rod assembly housing brackets in place as shown per the drawing. For additional tie rod mounting locations, the E-Z drain may need to be relocated with additional fittings (supplied by the customer). See Figure 2 for general assembly steps regarding the E-Z drain for TXT-E gearboxes and Figure 3 for general assembly steps regarding the E-Z drain for TA II gearboxes (pitot tube component installation needs to be followed first before the E-Z drain component installation for TA II gearboxes as seen in the next section). Figures 2 & 3 give general installation steps whereas the length of fittings and quantity of fittings may be different with various sizes of gearboxes. Also note, TXT12E varies in configuration from Figure 2 and can be seen in the schematic at the back of this manual. The magnetic drain plug will need to be reused at the end of the drain valve (TA II version can be seen in the next installation section).



Figure 2 – TXT General Drain Configuration

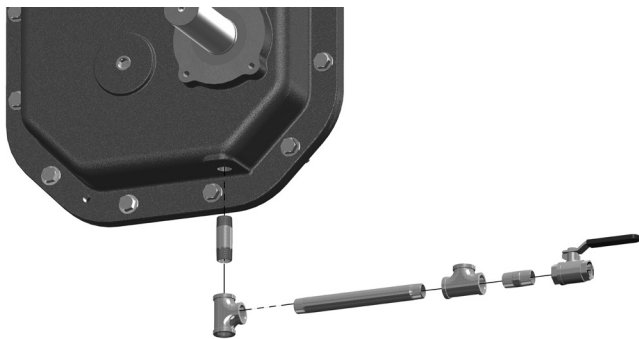


Figure 3 – TA II General Drain Configuration

INSTALLING OIL SAMPLING PITOT TUBE COMPONENTS

A precut pitot tube and a 1/4" NPT adapter are provided as well as additional pipe fittings to mount all items to the gearbox. For TXT-E gearboxes, the pitot tube and applicable piping components will be installed in the location of the lower-side oil plug hole from the factory. This installation is ideal for gearbox output speeds greater than 15 rpm. For slower-speed

applications, please contact Dodge Engineering. Remove the lower, side oil plug from the gearbox and keep this plug as it will be reused. Install pitot tube and applicable piping components, in this lower, side hole location as seen in Figure 4. Retain the oil plug that will be reused in the next installation section. For TA II gearboxes, the pitot tube and applicable piping components will be installed from the bottom oil plug hole location, which then will lead to the E-Z drain components. Remove the bottom magnetic oil plug from the gearbox and keep this plug as it will be reused. Install pitot tube and applicable piping components, then E-Z drain components, finishing with the reused magnetic oil plug, in this bottom hole location as shown in Figure 5.



Figure 4 – TXT-E Oil Sampling Pitot Tube Component Configuration



Figure 5 – TA II Oil Sampling Pitot Tube Component Configuration

The reliability kit includes a sampling port adapter that can be added to an existing sampling vacuum pump tubing. Oil sampling collection supplies are not included. When taking a sample, this port adapter screws onto the end of the pitot tube. Pitot tube and sampling port adapter are manufactured by Trico Corporation. Collection supplies can be ordered directly from them.

INSTALLING OIL SIGHT TUBE COMPONENTS

The reliability kit comes with an oil sight tube for visual status of oil level as well as a reclaim hose for any excess oil that may be displaced due to pressure build up internal to the gearbox during operation. During installation, use caution not to overtighten the brass sight tube. Orientate the sight tube where the window will be the most visible from a distance. The pipe fittings leading to the sight tube will need to be installed vertically where it is level and will show an accurate reading. The oil level will need to be

slightly higher than the pitot tube so an actual oil sample can be obtained.

For TXT-E gearboxes, the pipe fittings, oil plug that was previously removed, oil sight tube, and hose will be installed from where the previous installation step left off as seen in Figure 6. Note, TXT12E will have an additional riser pipe nipple between the oil sight tube and hose which can be seen in the installation schematic at the back of this manual.

For TA II gearboxes, the pipe fittings, oil plug that was previously removed, oil sight tube, and hose will be installed where the previous installation step left off as seen in Figure 7. Note, TA9, TA10 & TA12 will have additional pipe nipples and couplings from what is seen in Figure 7. These specific cases can be seen in the installation schematics at the back of this manual



Figure 6 – TXT-E Oil Sight Tube Components Configuration



Figure 7 – TA II Oil Sight Tube Components Configuration

INSTALLING RECLAIM HOSE & BREATHER COMPONENTS

The reliability kit contains a reclaim hose for any excess oil that may be displaced due to pressure build-up internal to the gearbox during operation. This hose connects the sight tube and components to the breather components. The breather provided with the level 1 kit is a Hydra-Lock, a desiccant breather that provides maximum protection from humidity and contaminants. Note, if wanting to use the highest plug-hole location (where the breather is typically installed from the factory) to fill the gearbox with oil, then oil will need to be added at this time before the hose and breather components are installed. The upper side plug hole can be used for oil fill as well if desired. Fill the gearbox with the appropriate amount of oil (until it shows in the sight tube above the level of the pitot tube). Refer to the Torque-Arm gearbox manual or catalog for approximate oil volumes. Verify there are no leaks.

For most TXT-E gearboxes, the hose is continued from the end of the previous oil sight tube component. If not already done, remove the breather (and pipe bushing if included) from the highest hole of the gearbox. The opposite hose end is then connected to the end of the breather components that are installed leading from this breather hole location as seen in Figure 8. The breather components may need to be adjusted with some angle so the hose can properly be connected. These components may need to be further adjusted once the motor mount is installed for clearance. For TXT5E & TXT6E, the components are in a different orientation than shown in Figure 8. Please see the installation schematics at the back of this manual for more details on these gearboxes.

For most TA II gearboxes, the hose is continued from the end of the previous oil sight tube component. If not already done, remove the breather (and pipe bushing, if included – except for TA4, this pipe bushing, will be reused for this gearbox size) from the highest hole of the gearbox. The opposite hose end is then connected to the end of the breather components that are installed leading from this breather hole location as seen in Figure 9. The breather components may need to be adjusted with some angle so the hose can properly be connected. These components may need to be further adjusted once the motor mount is installed for clearance. For TA4, TA5, TA10 & TA12, the breather components are in a different orientation than shown in Figure 9. Please see the installation schematics at the back of this manual for more details on these gearboxes.

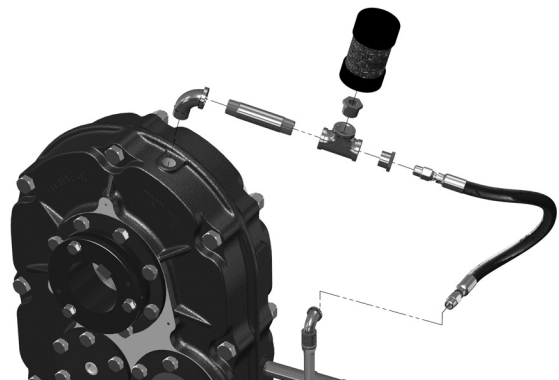


Figure 8 – TXT-E Reclaim Hose & Breather Components Configuration

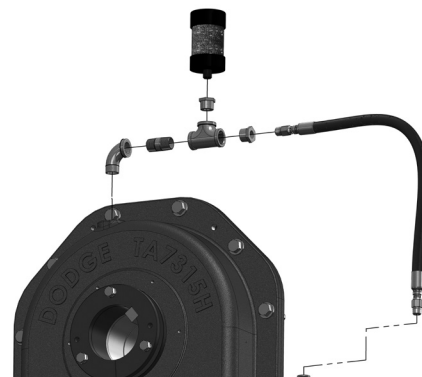


Figure 9 – TA II Reclaim Hose & Breather Components Configuration

Bushing Covers

The split bushing covers provide a safety solution for bushing components on the inboard-facing side of the gearbox. TXT-E and TA II gearboxes are supplied pre-drilled and tapped from the factory for the bushing covers so basic hand tools can be used for installation. The split bushing covers can be installed on the gearbox after it has been mounted on the driven shaft. These covers can be used as they are or can be combined with the Inboard Shaft Guard Extension for full protection from the gearbox to the mounted bearing.

Figure 10 shows an example of split bushing installation. For more information on these bushing covers, inboard shaft guards, and installation steps, refer to the TA Family Bushing Covers and Inboard Shaft Guard manual.

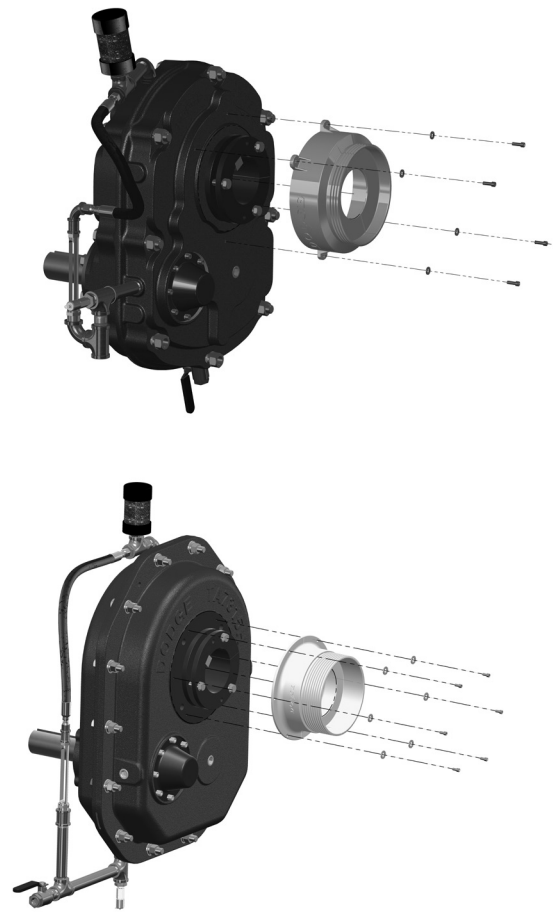
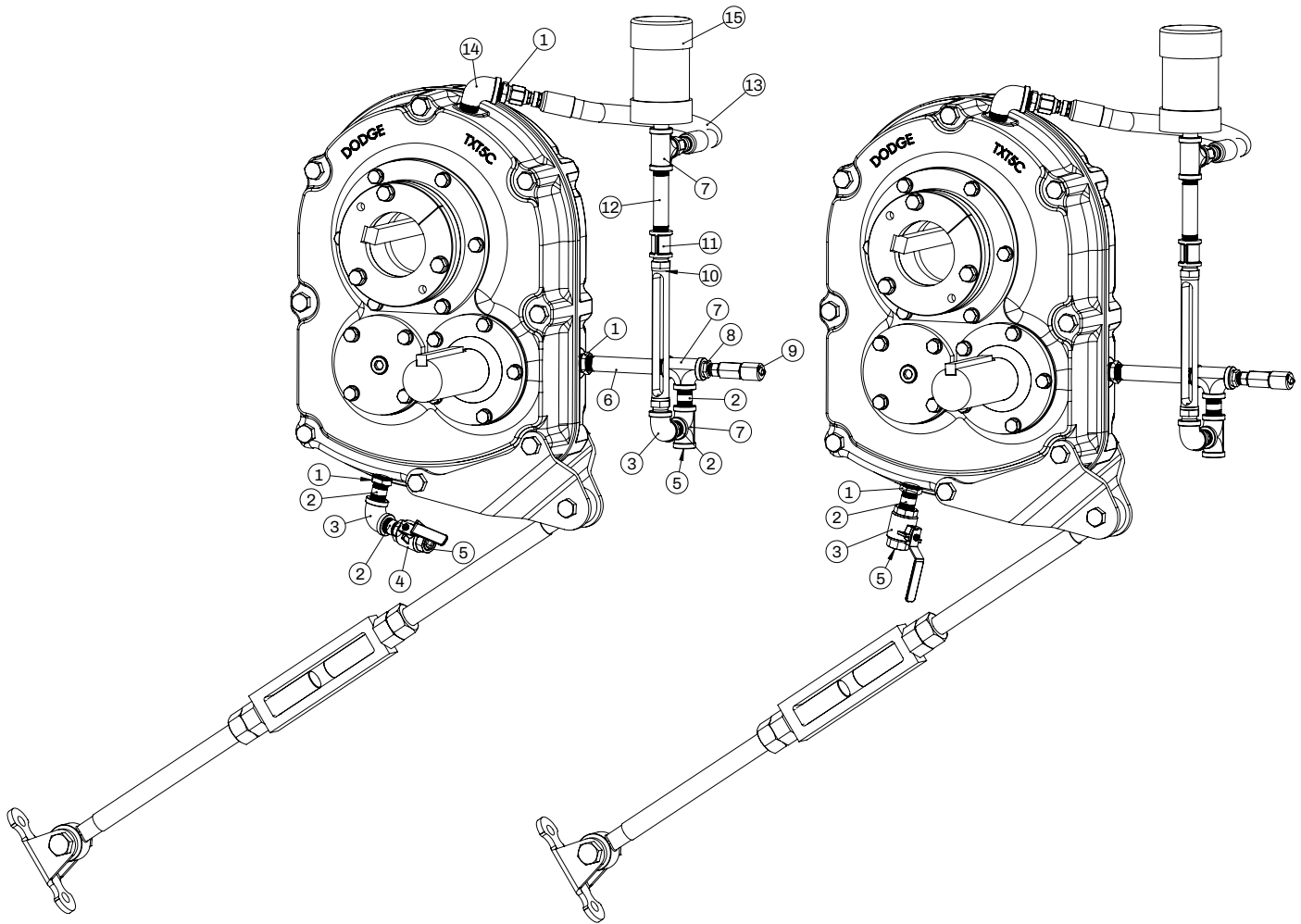


Figure 10 – TXT & TA II Split Bushing Cover Installation Example

TXT5 & TXT6 RELIABILITY KIT



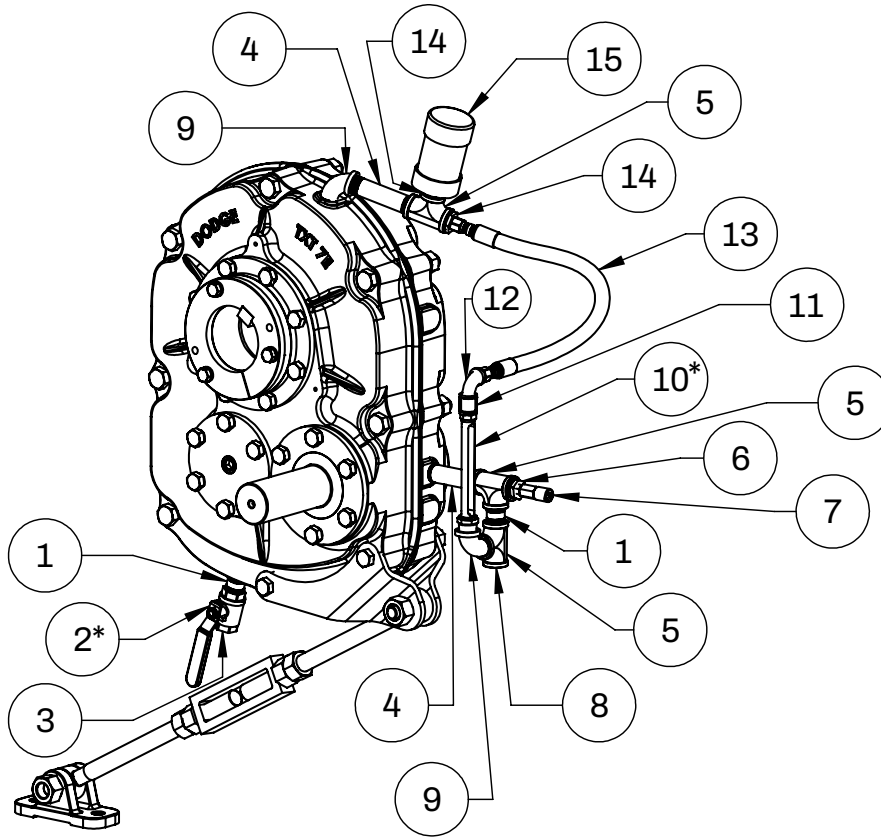
*** THE FITTINGS IN THIS KIT ARE DESIGNED FOR STANDARD MOUNTING AND OIL FILL WITH THE TIE ROD MOUNTED AS SHOWN. FOR ADDITIONAL TIE ROD MOUNTING LOCATIONS, THE DRAIN MAY NEED TO BE RELOCATED WITH ADDITIONAL PIPE FITTINGS (SUPPLIED BY CUSTOMER). FOR SLOW APPLICATIONS REQUIRING HIGHER OIL FILL, THE OIL SIGHT TUBE WILL NEED TO BE RAISED. FOR ALTERNATE MOUNTING POSITIONS, AND ADDITIONAL FITTINGS MAY ALSO BE NECESSARY.**

Notes:

1. Item 9 and 455003 sampling port adapter (not shown) come from Trico corporation. Sample collection supplies not provided.
2. Either drain configuration can be used but may not work for all tie rod mounting configurations.
3. Hydra-lock breather will be supplied standard as shown. Other Dodge breathers are optional and will need to be requested at the time of ordering.

Part Number	Description	Qty.
430083	1/2" TO 3/8" NPT ADAPTER	3
034530012CC	3/8" NPT X 1-1/2" PIPE NIPPLE	3 OR 4
034650003AC	3/8" NPT (90° ELBOW)	1 OR 2
095780	3/8" NPT BALL VALVE	1
430031	3/8" NPT PIPE PLUG	2
034530036CC	3/8" NPT X 4-1/2" PIPE NIPPLE	1
034720003AC	3/8" NPT PIPE TEE	3
034600003AC	3/8" TO 1/4" NPT ADAPTER	1
453303-7	PITOT TUBE (7" LONG)	1
967051	OIL SIGHT TUBE	1
034630003AC	3/8" NPT PIPE COUPLING	1
034530028CC	3/8" NPT X 3-1/2" PIPE NIPPLE	1
454631-15	HOSE ASSEMBLY	1
034670004AC	3/8" NPT (90° STREET ELBOW)	1
964363	HYDRA-LOCK BREATHER	1

TXT7 RELIABILITY KIT



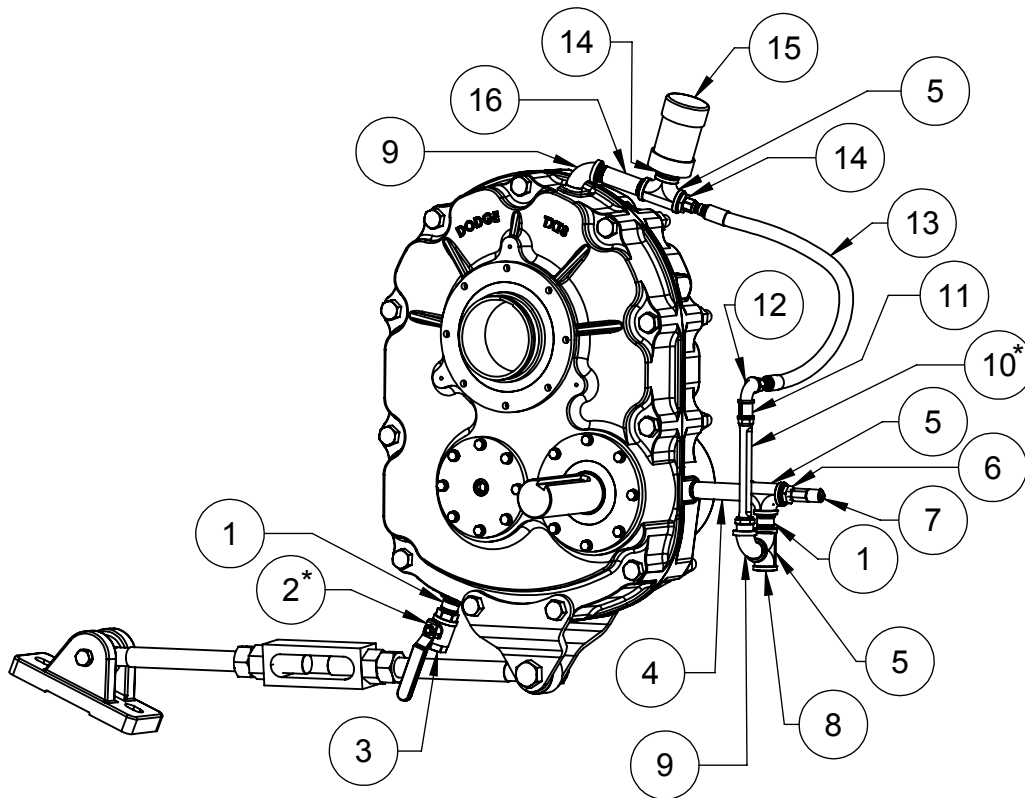
• THE FITTINGS IN THIS KIT ARE DESIGNED FOR STANDARD MOUNTING AND OIL FILL WITH THE TIE ROD MOUNTED AS SHOWN, FOR ADDITIONAL ROD MOUNTING LOCATIONS, THE DRAIN MAY NEED TO BE RELOCATED WITH ADDITIONAL PIPE FITTINGS (SUPPLIED BY CUSTOMER). FOR SLOW APPLICATIONS REQUIRING HIGHER OIL FILL, THE OIL SIGHT TUBE WILL NEED TO RAISED AT LEAST 2" WITH ADDITIONAL PIPE FITTINGS (SUPPLIED BY CUSTOMER), FOR ALTERNATE MOUNTING POSITIONS, ADDITIONAL FITTINGS MAY ALSO NECESSARY.

Notes:

1. Item 7 and 455003 sampling port adapter (not shown) come from Trico corporation. Sampling collection supplies not provided.
2. Items 3 and 8 are reused from components supplied with the gearbox from the factory.
3. Hydra-lock breather will be supplied standard as shown. Other Dodge breathers are optional and will need to be requested at the time of ordering.

Item No.	Part Number	Description	Qty.
1	034530016EC	3/4" NPT X 2" PIPE NIPPLE	2
2	095967	3/4" NPT BALL VALVE	1
3	430064	3/4" NPT MAGNETIC PLUG	(NOTE 2)
4	034530036EC	3/4" NPT X 4-1/2" PIPE NIPPLE	2
5	034720005AC	3/4" NPT TEE	3
6	453304	3/4" TO 1/4" NPT ADAPTER	1
7	453303-7	PITOT TUBE (7" LONG)	1
8	430035	3/4" NPT PIPE PLUG	(NOTE 2)
9	034670005AC	3/4" NPT (90° STREET ELBOW)	2
10	967052	OIL SIGHT TUBE	1
11	034630003AC	3/8" NPT PIPE COUPLING	1
12	034670003AC	3/8" NPT (90° STREET ELBOW)	1
13	454631-22	HOSE ASSEMBLY	1
14	034600009AC	3/4" TO 3/8" NPT ADAPTER	2
15	964363	HYDRA-LOCK BREATHER	(NOTE 3)

TXT8 RELIABILITY KIT



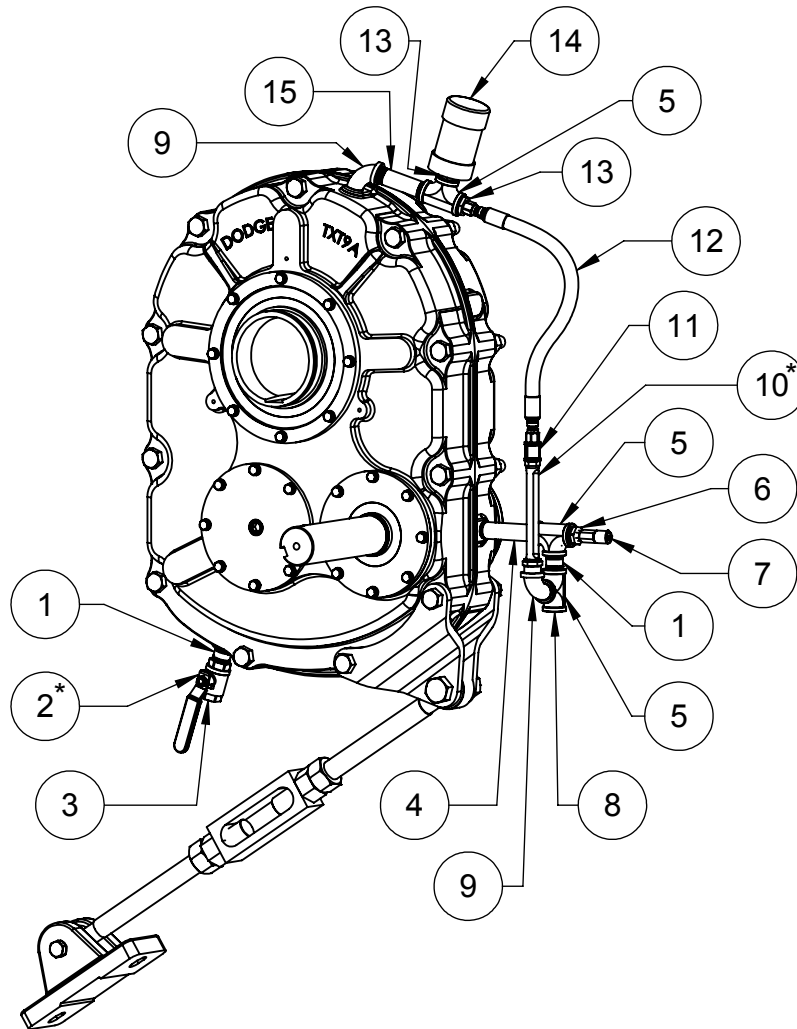
'THE FITTINGS IN THIS KIT ARE DESIGNED FOR STANDARD MOUNTING AND OIL FILL WITH THE TIE ROD MOUNTED AS SHOWN. FOR ADDITIONAL TIE ROD MOUNTING LOCATIONS, THE DRAIN MAY NEED TO BE RELOCATED WITH ADDITIONAL PIPE FITTINGS (SUPPLIED BY CUSTOMER). FOR SLOW APPLICATIONS REQUIRING HIGHER OIL FILL, THE OIL SIGHT TUBE WILL NEED TO RAISED AT LEAST 5" WITH ADDITIONAL PIPE FITTINGS (SUPPLIED BY CUSTOMER). FOR ALTERNATE MOUNTING POSITIONS, ADDITIONAL FITTINGS MAY ALSO BE NECESSARY.

Notes:

1. Item 7 and 455003 sampling port adapter (not shown) come from Trico corporation. Sampling collection supplies not provided.
2. Items 3 and 8 are reused from components supplied with the gearbox from the factory.
3. Hydra-lock breather will be supplied standard as shown. Other Dodge breathers are optional and will need to be requested at the time of ordering.

Item No.	Part Number	Description	Qty.
1	034530016EC	3/4" NPT X 2" PIPE NIPPLE	2
2	095967	3/4" NPT BALL VALVE	1
3	430064	3/4" NPT MAGNETIC PLUG	(NOTE 2)
4	034530040EC	3/4" NPT X 5" PIPE NIPPLE	1
5	034720005AC	3/4" NPT TEE	3
6	453304	3/4" TO 1/4" NPT ADAPTER	1
7	453303-7	PITOT TUBE (7" LONG)	1
8	430035	3/4" NPT PIPE PLUG	(NOTE 2)
9	034670005AC	3/4" NPT (90° STREET ELBOW)	2
10	967052	OIL SIGHT TUBE	1
11	034630003AC	3/8" NPT PIPE COUPLING	1
12	034670003AC	3/8" NPT (90° STREET ELBOW)	1
13	454631-26	HOSE ASSEMBLY	1
14	034600009AC	3/4" TO 3/8" NPT ADAPTER	2
15	964363	HYDRA-LOCK BREATHER	(NOTE 3)
16	034530032EC	3/4" NPT X 4" PIPE NIPPLE	1

TXT9 RELIABILITY KIT



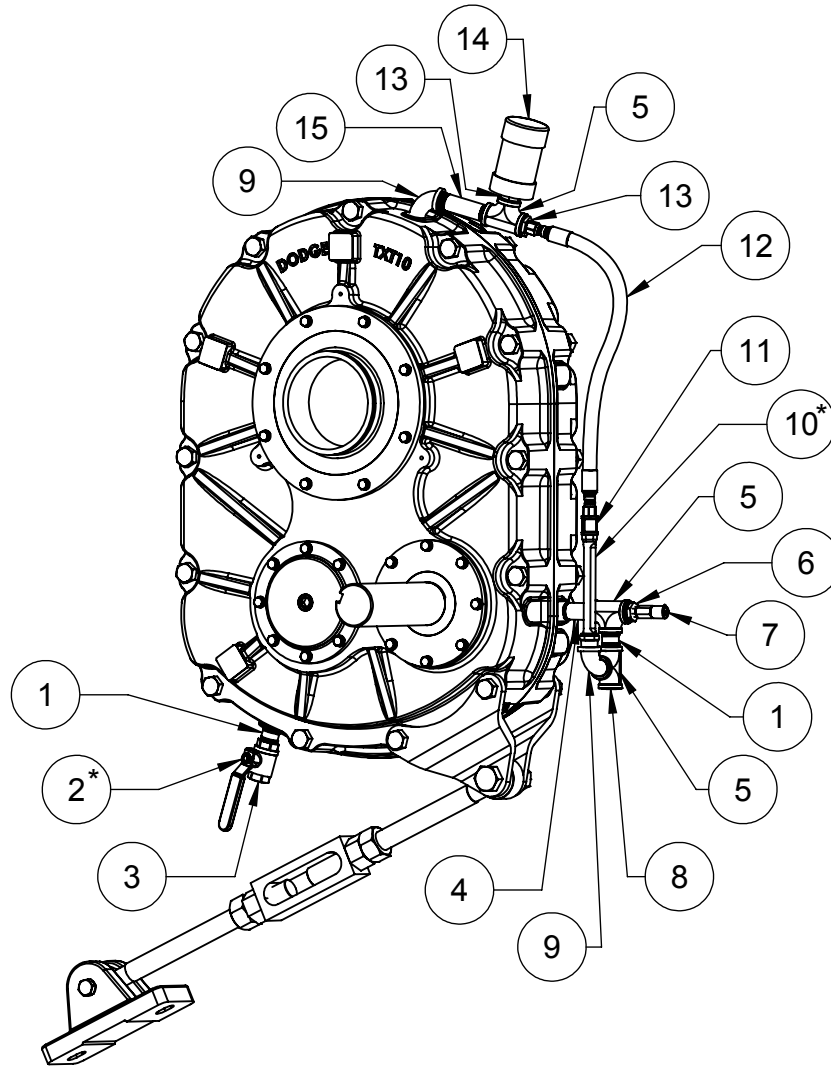
• THE FITTINGS IN THIS KIT RE DESIGNED FOR STANDARD MOUNTING AND OIL FILL WITH THE TIE ROD MOUNTED AS SHOWN. FOR ADDITIONAL TIE ROD MOUNTING LOCATIONS, THE DRAIN MAY NEED TO BE RELOCATED WITH ADDITIONAL PIPE FITTINGS (SUPPLIED BY CUSTOMER). FOR SLOW APPLICATIONS REQUIRING HIGHER OIL FILL, THE OIL SIGHT TUBE WILL NEED TO RAISED AT LEAST 5" WITH ADDITIONAL PIPE F ITTINGS (SUPPLIED BY CUSTOMER). FOR ALTERNATE MOUNTING POSITIONS, ADDITIONAL FITTINGS MAY ALSO BE NECESSARY.

Notes:

1. Item 7 and 455003 sampling port adapter (not shown) come from Trico corporation. Sampling collection supplies not provided.
2. Items 3 and 8 are reused from components supplied with the gearbox from the factory.
3. Hydra-lock breather will be supplied standard as shown. Other Dodge breathers are optional and will need to be requested at the time of ordering.

Item No.	Part Number	Description	Qty.
1	034530016EC	3/4" NPT X 2" PIPE NIPPLE	2
2	095967	3/4" NPT BALL VALVE	1
3	430064	3/4" NPT MAGNETIC PLUG	(NOTE 2)
4	034530040EC	3/4" NPT X 5" PIPE NIPPLE	1
5	034720005AC	3/4" NPT TEE	3
6	453304	3/4" TO 1/4" NPT ADAPTER	1
7	453303-7	PITOT TUBE (7" LONG)	1
8	430035	3/4" NPT PIPE PLUG	(NOTE 2)
9	034670005AC	3/4" NPT (90° STREET ELBOW)	2
10	967052	OIL SIGHT TUBE	1
11	034630003AC	3/8" NPT PIPE COUPLING	1
12	454631-20	HOSE ASSEMBLY	1
13	034600009AC	3/4" TO 3/8" NPT ADAPTER	2
14	964363	HYDRA-LOCK BREATHER	(NOTE 3)
15	034530032EC	3/4" NPT X 4" PIPE NIPPLE	1

TXT10 RELIABILITY KIT



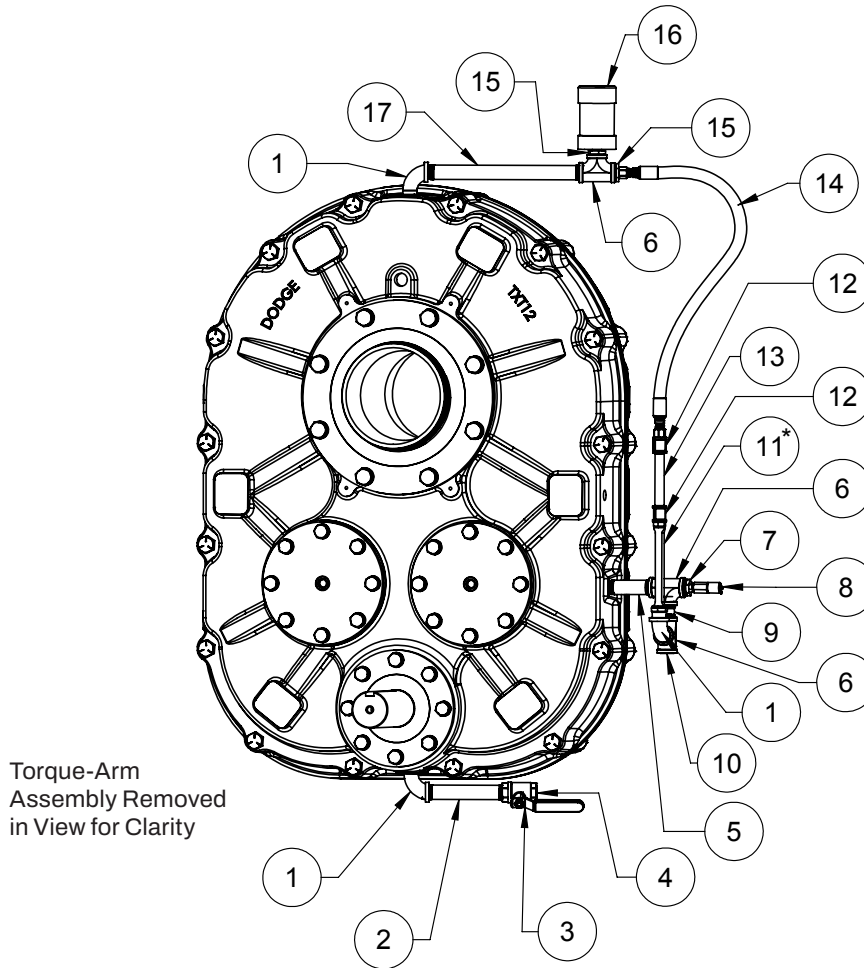
• THE FITTINGS IN THIS KIT ARE DESIGNED FOR STANDARD MOUNTING AND OIL FILL WITH THE TIE ROD MOUNTED AS SHOWN. FOR ADDITIONAL TIE ROD MOUNTING LOCATIONS. THE DRAIN MAY NEED TO BE RELOCATED WITH ADDITIONAL PIPE FITTINGS (SUPPLIED BY CUSTOMER). FOR SLOW APPLICATIONS REQUIRING HIGHER OIL FILL, THE OIL SIGHT TUBE WILL NEED TO RAISED AT LEAST 8" WITH ADDITIONAL PIPE FITTINGS (SUPPLIED BY CUSTOMER). FOR ALTERNATE MOUNTING POSITIONS, ADDITIONAL FITTINGS MAY ALSO BE NECESSARY.

Notes:

1. Item 7 and 455003 sampling port adapter (not shown) come from Trico corporation. Sampling collection supplies not provided.
2. Items 3 and 8 are reused from components supplied with the gearbox from the factory.
3. Hydra-lock breather will be supplied standard as shown. Other Dodge breathers are optional and will need to be requested at the time of ordering.

Item No.	Part Number	Description	Qty.
1	034530016EC	3/4" NPT X 2" PIPE NIPPLE	2
2	095967	3/4" NPT BALL VALVE	1
3	430064	3/4" NPT MAGNETIC PLUG	(NOTE 2)
4	034530024EC	3/4" NPT X 3" PIPE NIPPLE	1
5	034720005AC	3/4" NPT TEE	3
6	453304	3/4" TO 1/4" NPT ADAPTER	1
7	453303-7	PITOT TUBE (7" LONG)	1
8	430035	3/4" NPT PIPE PLUG	(NOTE 2)
9	034670005AC	3/4" NPT (90° STREET ELBOW)	2
10	967052	OIL SIGHT TUBE	1
11	034630003AC	3/8" NPT PIPE COUPLING	1
12	454631-22	HOSE ASSEMBLY	1
13	034600009AC	3/4" TO 3/8" NPT ADAPTER	2
14	964363	HYDRA-LOCK BREATHER	(NOTE 3)
15	034530032EC	3/4" NPT X 4" PIPE NIPPLE	1

TXT12 RELIABILITY KIT



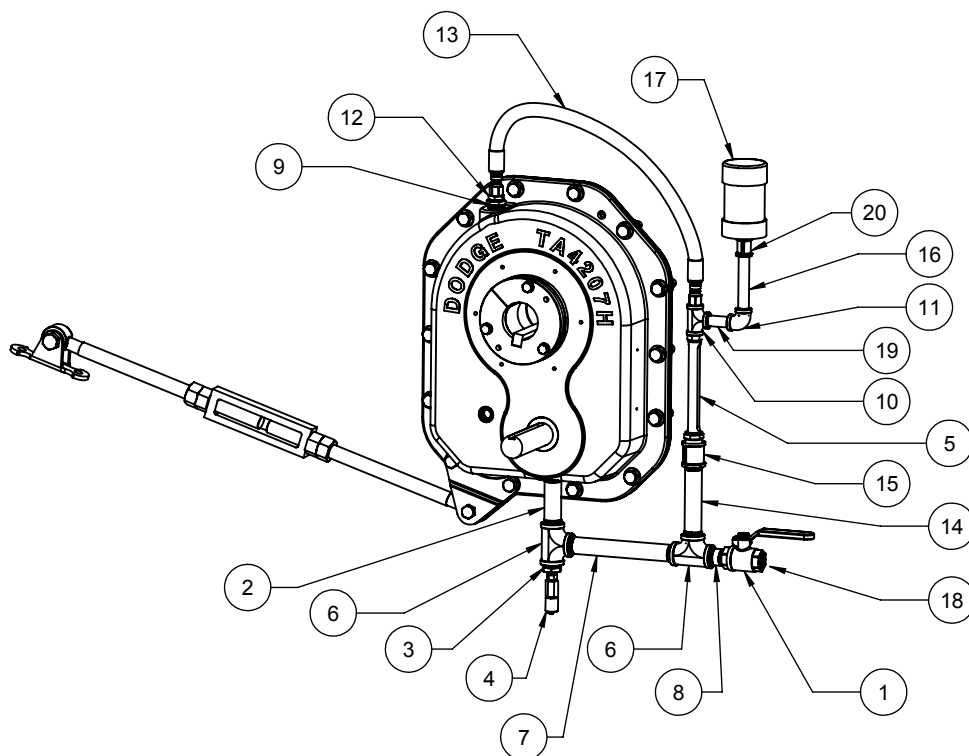
• THE FITTINGS IN THIS KIT ARE DESIGNED FOR STANDARD MOUNTING AND OIL FILL WITH THE TIE ROD MOUNTED AS SHOWN. FOR SLOW APPLICATIONS REQUIRING HIGHER OIL FILL, THE OIL SIGHT TUBE WILL NEED TO RAISED AT LEAST 10" WITH ADDITIONAL PIPE FITTINGS (SUPPLIED BY CUSTOMER). FOR ALTERNATE MOUNTING POSITIONS, ADDITIONAL FITTINGS MAY ALSO BE NECESSARY.

Notes:

1. Item 8 and 455003 sampling port adapter (not shown) come from Trico corporation. Sampling collection supplies not provided.
2. Items 4 and 10 are reused from components supplied with the gearbox from the factory.
3. Hydra-lock breather will be supplied standard as shown. Other Dodge breathers are optional and will need to be requested at the time of ordering.

Item No.	Part Number	Description	Qty.
1	034670005AC	3/4" NPT (90° STREET ELBOW)	3
2	034530052EC	3/4" NPT X 6-1/2" PIPE NIPPLE	1
3	095967	3/4" NPT BALL VALVE	1
4	430064	3/4" NPT MAGNETIC PLUG	(NOTE 2)
5	034530032EC	3/4" NPT X 4" PIPE NIPPLE	1
6	034720005AC	3/4" NPT TEE	3
7	453304	3/4" TO 1/4" NPT ADAPTER	1
8	453303-7	PITOT TUBE (7" LONG)	1
9	034530016EC	3/4" NPT X 2" PIPE NIPPLE	1
10	430035	3/4" NPT PIPE PLUG	(NOTE 2)
11	967052	OIL SIGHT TUBE	1
12	034630003AC	3/8" NPT PIPE COUPLING	2
13	034530040CC	3/8" NPT X 5" PIPE NIPPLE	1
14	454631-30	HOSE ASSEMBLY	1
15	034600009AC	3/4" TO 3/8" NPT ADAPTER	2
16	964363	HYDRA-LOCK BREATHER	(NOTE 3)
17	034530096EC	3/4" NPT X 12" PIPE NIPPLE	1

TA4207H RELIABILITY KIT

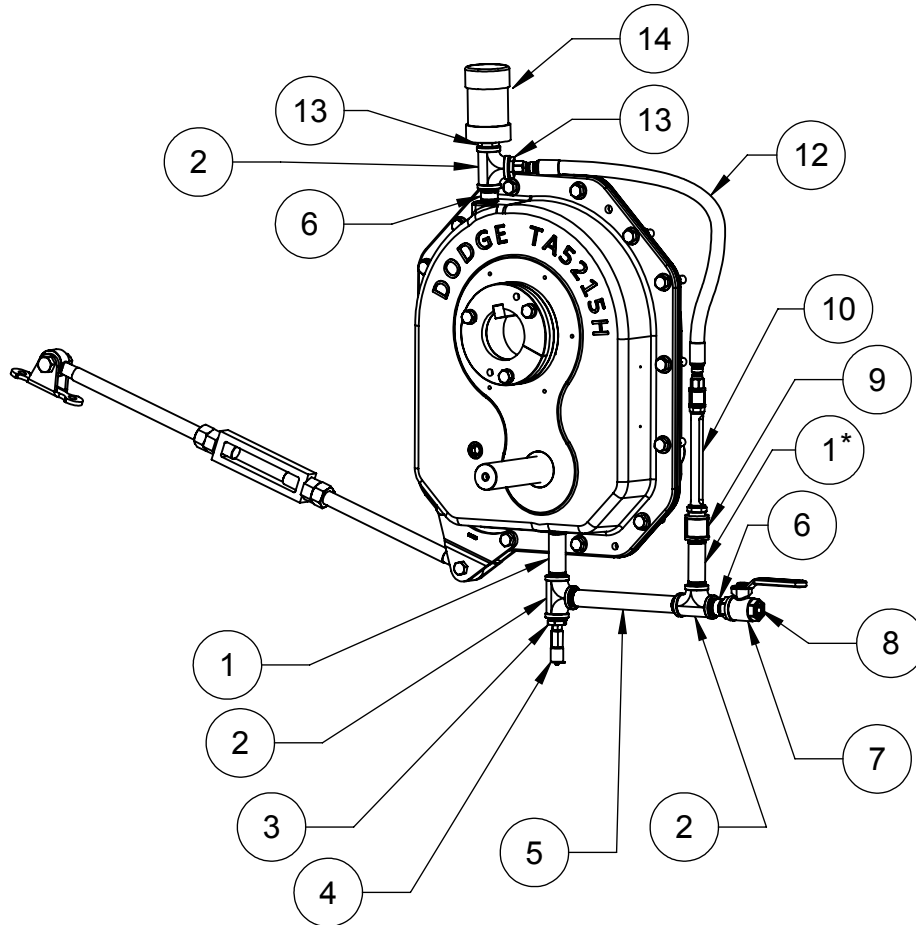


Notes:

1. Item 4 and 455003 sampling port adapter (not shown) come from Trico corporation. Sampling collection supplies not provided.
2. Items 9 and 18 are reused from components supplied with the gearbox from the factory.
3. Hydra-lock breather will be supplied standard as shown. Other Dodge breathers are optional and will need to be requested at the time of ordering.

Item No.	Part Number	Description	Qty.
1	095967	3/4" NPT BALL VALVE	1
2	034530032EC	3/4" NPT X 4" PIPE NIPPLE	1
3	453304	3/4" TO 1/4" NPT ADAPTER	1
4	453303-7	PITOT TUBE (7" LONG)	1
5	967052	OIL SIGHT TUBE	1
6	034720005AC	3/4" NPT TEE	2
7	034530064EC	3/4" NPT X 8" PIPE NIPPLE	1
8	034530016EC	3/4" NPT X 2" PIPE NIPPLE	1
9	430079	3/4" TO 1/2" NPT ADAPTER	(NOTE 2)
10	034720003AC	3/8" NPT TEE	1
11	034650003AC	3/8" NPT (90° ELBOW)	1
12	430083	1/2" TO 3/8" NPT ADAPTER	1
13	454631-26	HOSE ASSEMBLY	1
14	034530044EC	3/4" NPT X 5-1/2" PIPE NIPPLE	1
15	034630005AC	3/4" NPT PIPE COUPLING	1
16	034530036CC	3/8" NPT X 4-1/2" PIPE NIPPLE	1
17	964363	HYDRA-LOCK BREATHER	(NOTE 3)
18	430064	3/4" NPT MAGNETIC PLUG	(NOTE 2)
19	034530020CC	3/8" NPT X 2-1/2" PIPE NIPPLE	1
20	034630003AC	3/8" NPT PIPE COUPLING	1

TA5215H RELIABILITY KIT



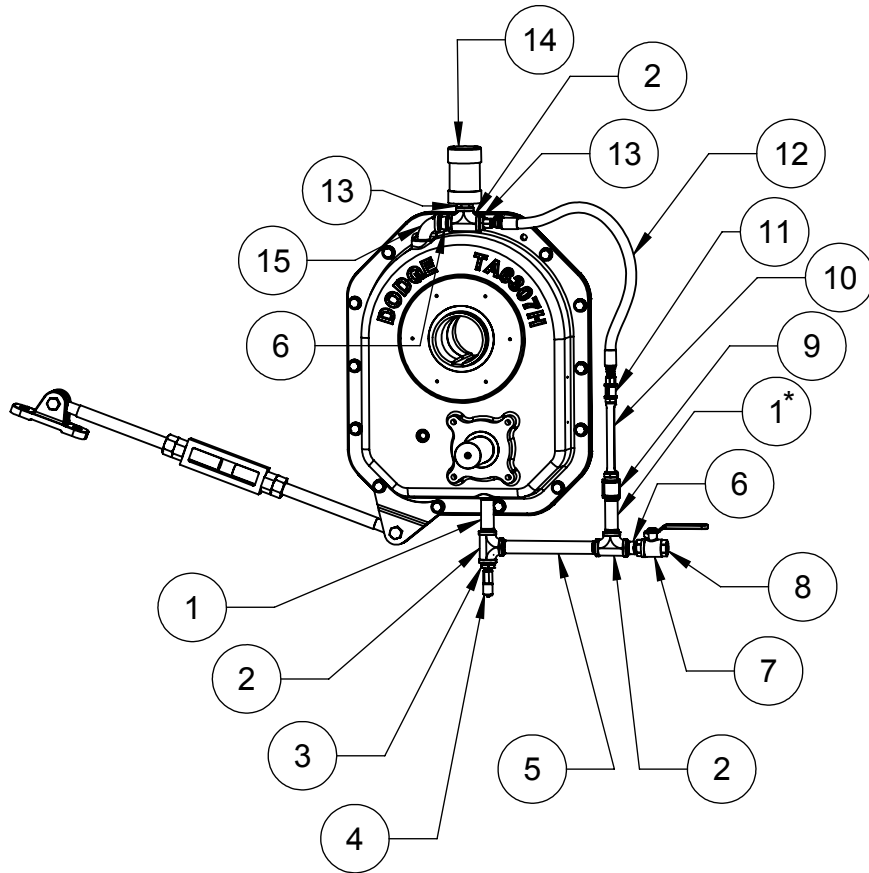
• THE FITTINGS IN THIS KIT ARE DESIGNED FOR STANDARD MOUNTING AND OIL FILL. FOR SLOW APPLICATIONS REQUIRING HIGHER OIL FILL, USE A 3/4" NPT X 7" PIPE NIPPLE (SUPPLIED BY CUSTOMER). FOR ALTERNATE MOUNTING POSITIONS, ADDITIONAL FITTINGS MAY ALSO BE NECESSARY.

Notes:

1. Item 4 and 455003 sampling port adapter (not shown) come from Trico corporation. Sampling collection supplies not provided.
2. Item 8 is reused from components supplied with the gearbox from the factory.
3. Hydra-lock breather will be supplied standard as shown. Other Dodge breathers are optional and will need to be requested at the time of ordering.

Item No.	Part Number	Description	Qty.
1	034530032EC	3/4" NPT X 4" PIPE NIPPLE	2
2	034720005AC	3/4" NPT TEE	3
3	453304	3/4" TO 1/4" NPT ADAPTER	1
4	453303-7	PITOT TUBE (7" LONG)	1
5	034530072EC	3/4" NPT X 9" PIPE NIPPLE	1
6	034530016EC	3/4" NPT X 2" PIPE NIPPLE	2
7	095967	3/4" NPT BALL VALVE	1
8	430064	3/4" NPT MAGNETIC PLUG	(NOTE 2)
9	034630005AC	3/4" NPT PIPE COUPLING	1
10	967052	OIL SIGHT TUBE	1
11	034630003AC	3/8" NPT PIPE COUPLING	1
12	454631-26	HOSE ASSEMBLY	1
13	034600009AC	3/4" TO 3/8" NPT ADAPTER	2
14	964363	HYDRA-LOCK BREATHER	(NOTE 3)

TA6307H RELIABILITY KIT



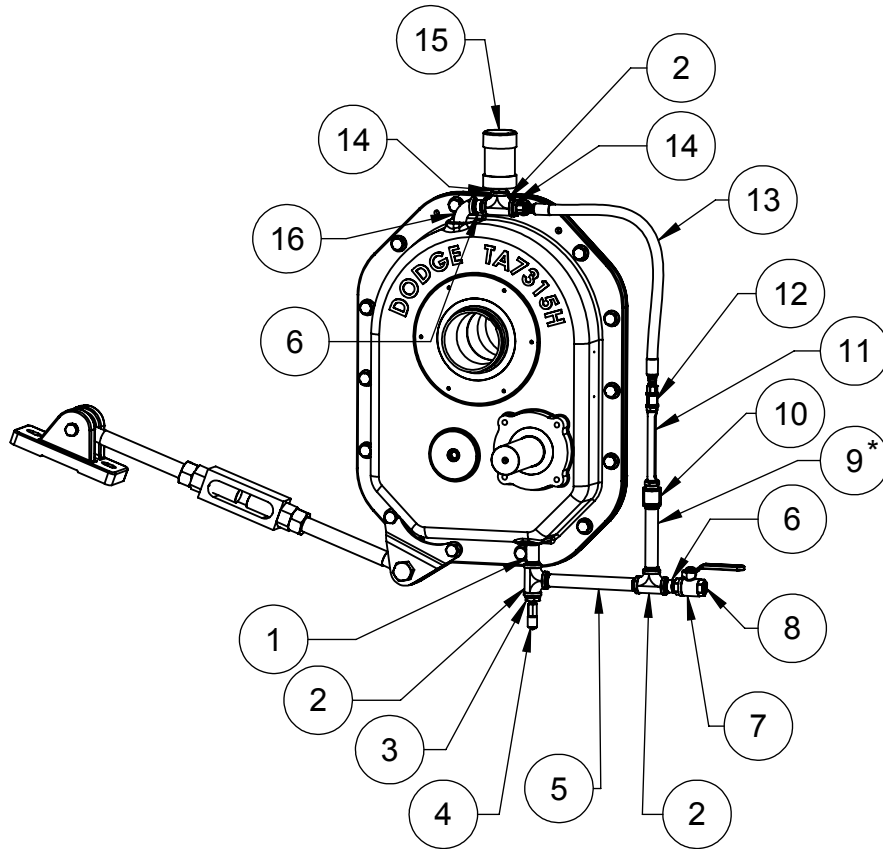
• THE FITTINGS IN THIS KIT ARE DESIGNED FOR STANDARD MOUNTING AND OIL FILL. FOR SLOW APPLICATIONS REQUIRING HIGHER OIL FILL, USE A 3/4" NPT X 8" PIPE NIPPLE (SUPPLIED BY CUSTOMER). FOR ALTERNATE MOUNTING POSITIONS, ADDITIONAL FITTINGS MAY ALSO BE NECESSARY.

Notes:

1. Item 4 and 455003 sampling port adapter (not shown) come from Trico corporation. Sampling collection supplies not provided.
2. Items 8 is reused from components supplied with the gearbox from the factory.
3. Hydra-lock breather will be supplied standard as shown. Other Dodge breathers are optional and will need to be requested at the time of ordering.

Item No.	Part Number	Description	Qty.
1	034530032EC	3/4" NPT X 4" PIPE NIPPLE	2
2	034720005AC	3/4" NPT TEE	3
3	453304	3/4" TO 1/4" NPT ADAPTER	1
4	453303-7	PITOT TUBE (7" LONG)	1
5	034530072EC	3/4" NPT X 9" PIPE NIPPLE	1
6	034530016EC	3/4" NPT X 2" PIPE NIPPLE	2
7	095967	3/4" NPT BALL VALVE	1
8	430064	3/4" NPT MAGNETIC PLUG	(NOTE 2)
9	034630005AC	3/4" NPT PIPE COUPLING	1
10	967052	OIL SIGHT TUBE	1
11	034630003AC	3/8" NPT PIPE COUPLING	1
12	454631-26	HOSE ASSEMBLY	1
13	034600009AC	3/4" TO 3/8" NPT ADAPTER	2
14	964363	HYDRA-LOCK BREATHER	(NOTE 3)
15	034670005AC	3/4" NPT (90° STREET ELBOW)	1

TA7315H RELIABILITY KIT



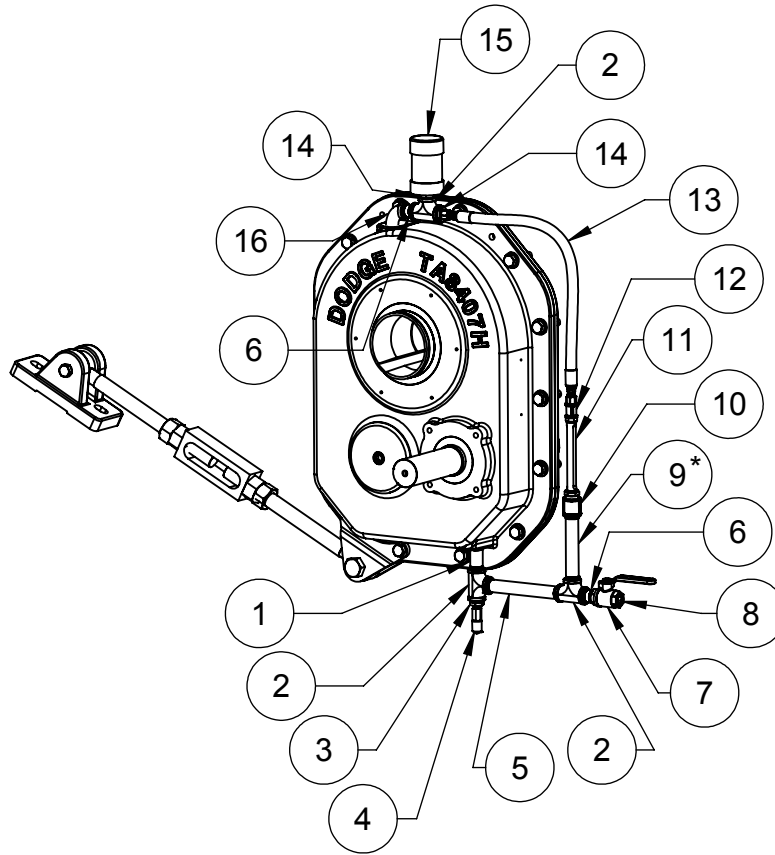
• THE FITTINGS IN THIS KIT ARE DESIGNED FOR STANDARD MOUNTING AND OIL FILL. FOR SLOW APPLICATIONS REQUIRING HIGHER OIL FILL, USE A 3/4" NPT X 10" PIPE NIPPLE (SUPPLIED BY CUSTOMER). FOR ALTERNATE MOUNTING POSITIONS, ADDITIONAL FITTINGS MAY ALSO BE NECESSARY.

Notes:

1. Item 4 and 455003 sampling port adapter (not shown) come from Trico corporation. Sampling collection supplies not provided.
2. Items 8 is reused from components supplied with the gearbox from the factory.
3. Hydra-lock breather will be supplied standard as shown. Other Dodge breathers are optional and will need to be requested at the time of ordering.

Item No.	Part Number	Description	Qty.
1	034530024EC	3/4" NPT X 3" PIPE NIPPLE	1
2	034720005AC	3/4" NPT TEE	3
3	453304	3/4" TO 1/4" NPT ADAPTER	1
4	453303-7	PITOT TUBE (7" LONG)	1
5	034530072EC	3/4" NPT X 9" PIPE NIPPLE	1
6	034530016EC	3/4" NPT X 2" PIPE NIPPLE	2
7	095967	3/4" NPT BALL VALVE	1
8	430064	3/4" NPT MAGNETIC PLUG	(NOTE 2)
9	034530052EC	3/4" NPT X 6-1/2" PIPE NIPPLE	1
10	034630005AC	3/4" NPT PIPE COUPLING	1
11	967052	OIL SIGHT TUBE	1
12	034630003AC	3/8" NPT PIPE COUPLING	1
13	454631-26	HOSE ASSEMBLY	1
14	034600009AC	3/4" TO 3/8" NPT ADAPTER	2
15	964363	HYDRA-LOCK BREATHER	(NOTE 3)
16	034670005AC	3/4" NPT (90° STREET ELBOW)	1

TA8407H RELIABILITY KIT



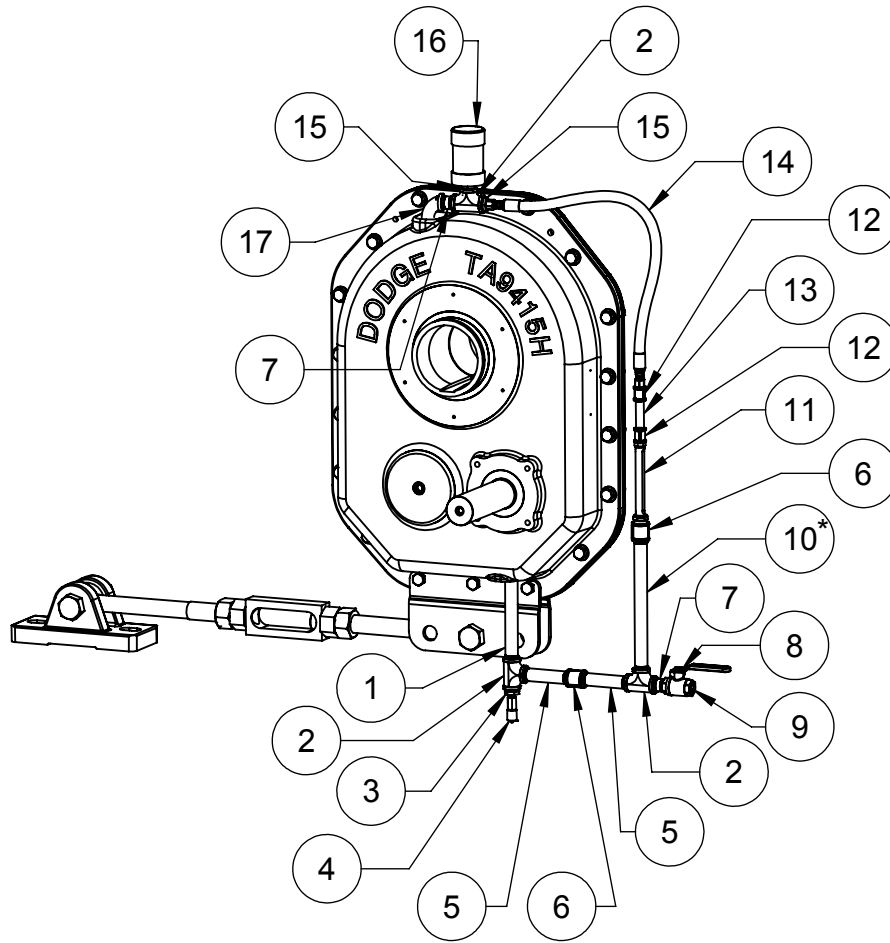
• THE FITTINGS IN THIS KIT ARE DESIGNED FOR STANDARD MOUNTING AND OIL FILL. FOR SLOW APPLICATIONS REQUIRING HIGHER OIL FILL, USE A 3/4" NPT X 10" PIPE NIPPLE (SUPPLIED BY CUSTOMER). FOR ALTERNATE MOUNTING POSITIONS ADDITIONAL FITTINGS MAY ALSO BE NECESSARY.

Notes:

1. Item 4 and 455003 sampling port adapter (not shown) come from Trico corporation. Sampling collection supplies not provided.
2. Items 8 is reused from components supplied with the gearbox from the factory.
3. Hydra-lock breather will be supplied standard as shown. Other Dodge breathers are optional and will need to be requested at the time of ordering.

Item No.	Part Number	Description	Qty.
1	034530024EC	3/4" NPT X 3" PIPE NIPPLE	1
2	034720005AC	3/4" NPT TEE	3
3	453304	3/4" TO 1/4" NPT ADAPTER	1
4	453303-7	PITOT TUBE (7" LONG)	1
5	034530064EC	3/4" NPT X 8" PIPE NIPPLE	1
6	034530016EC	3/4" NPT X 2" PIPE NIPPLE	2
7	095967	3/4" NPT BALL VALVE	1
8	430064	3/4" NPT MAGNETIC PLUG	(NOTE 2)
9	034530052EC	3/4" NPT X 6-1/2" PIPE NIPPLE	1
10	034630005AC	3/4" NPT PIPE COUPLING	1
11	967052	OIL SIGHT TUBE	1
12	034630003AC	3/8" NPT PIPE COUPLING	1
13	454631-26	HOSE ASSEMBLY	1
14	034600009AC	3/4" TO 3/8" NPT ADAPTER	2
15	964363	HYDRA-LOCK BREATHER	(NOTE 3)
16	034670005AC	3/4" NPT (90° STREET ELBOW)	1

TA9415H RELIABILITY KIT



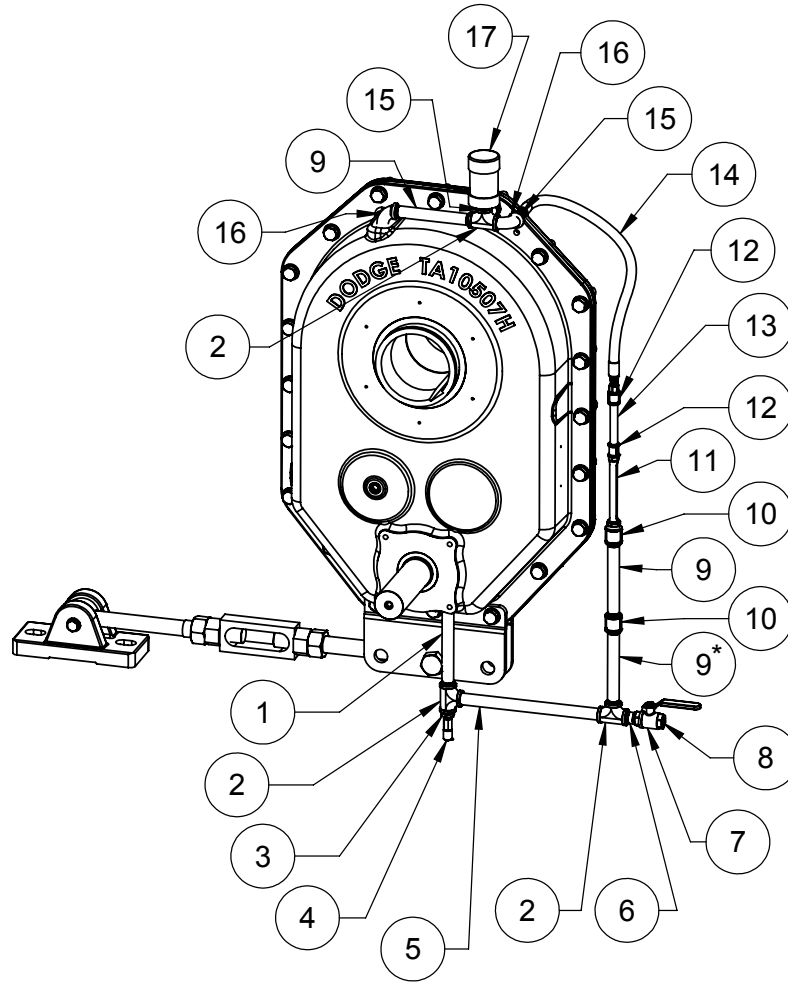
*** THE FITTINGS IN THIS KIT ARE DESIGNED FOR STANDARD MOUNTING AND OIL FILL. FOR SLOW APPLICATIONS REQUIRING HIGHER OIL FILL, USE A 3/4" NPT X 18" PIPE NIPPLE (SUPPLIED BY CUSTOMER). FOR ALTERNATE MOUNTING POSITIONS ADDITIONAL FITTINGS MAY ALSO BE NECESSARY.**

Notes:

1. Item 4 and 455003 sampling port adapter (not shown) come from Trico corporation. Sampling collection supplies not provided.
2. Items 9 is reused from components supplied with the gearbox from the factory.
3. Hydra-lock breather will be supplied standard as shown. Other Dodge breathers are optional and will need to be requested at the time of ordering.

Item No.	Part Number	Description	Qty.
1	034530064EC	3/4" NPT X 8" PIPE NIPPLE	1
2	034720005AC	3/4" NPT TEE	3
3	453304	3/4" TO 1/4" NPT ADAPTER	1
4	453303-12	PITOT TUBE (12" LONG)	1
5	034530040EC	3/4" NPT X 5" PIPE NIPPLE	2
6	034630005AC	3/4" NPT PIPE COUPLING	2
7	034530016EC	3/4" NPT X 2" PIPE NIPPLE	2
8	095967	3/4" NPT BALL VALVE	1
9	430064	3/4" NPT MAGNETIC PLUG	(NOTE 2)
10	034530096EC	3/4" NPT X 12" PIPE NIPPLE	1
11	967052	OIL SIGHT TUBE	1
12	034630003AC	3/8" NPT PIPE COUPLING	2
13	034530024CC	3/8" NPT X 3" PIPE NIPPLE	1
14	454631-30	HOSE ASSEMBLY	1
15	034600009AC	3/4" TO 3/8" NPT ADAPTER	2
16	964363	HYDRA-LOCK BREATHER	(NOTE 3)
17	034670005AC	3/4" NPT (90° STREET ELBOW)	1

TA10507H RELIABILITY KIT



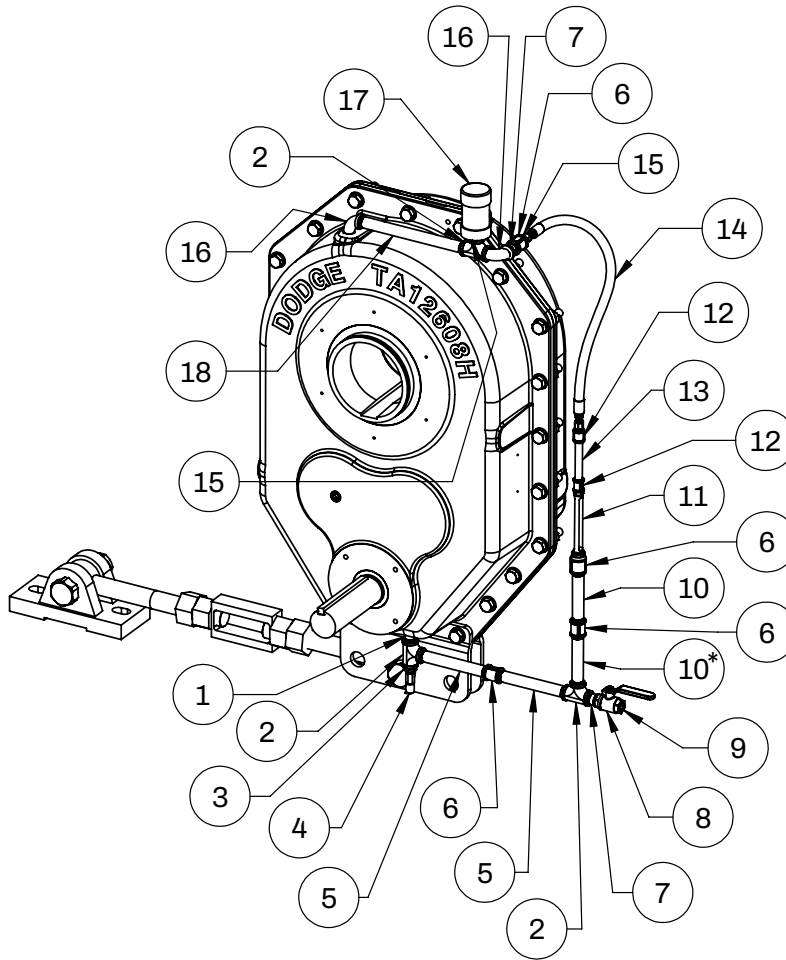
• THE FITTINGS IN THIS KIT ARE DESIGNED FOR STANDARD MOUNTING AND OIL FILL. FOR SLOW APPLICATIONS REQUIRING HIGHER OIL FILL. USE A 3/4" NPT X 14" PIPE NIPPLE (SUPPLIED BY CUSTOMER). FOR ALTERNATE MOUNTING POSITIONS, ADDITIONAL FITTINGS MAY ALSO BE NECESSARY.

Notes:

1. Item 4 and 455003 sampling port adapter (not shown) come from Trico corporation. Sampling collection supplies not provided.
2. Items 9 is reused from components supplied with the gearbox from the factory.
3. Hydra-lock breather will be supplied standard as shown. Other Dodge breathers are optional and will need to be requested at the time of ordering.

Item No.	Part Number	Description	Qty.
1	034530072EC	3/4" NPT X 9" PIPE NIPPLE	1
2	034720005AC	3/4" NPT TEE	3
3	453304	3/4" TO 1/4" NPT ADAPTER	1
4	453303-12	PITOT TUBE (12" LONG)	1
5	034530112EC	3/4" NPT X 14" PIPE NIPPLE	1
6	034530016EC	3/4" NPT X 2" PIPE NIPPLE	1
7	095967	3/4" NPT BALL VALVE	1
8	430064	3/4" NPT MAGNETIC PLUG	(NOTE 2)
9	034530064EC	3/4" NPT X 8" PIPE NIPPLE	3
10	034630005AC	3/4" NPT PIPE COUPLING	2
11	967052	OIL SIGHT TUBE	1
12	034630003AC	3/8" NPT PIPE COUPLING	2
13	034530040CC	3/8" NPT X 5" PIPE NIPPLE	1
14	454631-30	HOSE ASSEMBLY	1
15	034600009AC	3/4" TO 3/8" NPT ADAPTER	2
16	034670005AC	3/4" NPT (90° STREET ELBOW)	2
17	964363	HYDRA-LOCK BREATHER	(NOTE 3)

TA12608H RELIABILITY KIT



• THE FITTINGS IN THIS KIT ARE DESIGNED FOR STANDARD MOUNTING AND OIL FILL. FOR SLOW APPLICATIONS REQUIRING HIGHER OIL FILL, USE A 3/4" NPT X 10" PIPE NIPPLE (SUPPLIED BY CUSTOMER). FOR ALTERNATE MOUNTING POSITIONS, ADDITIONAL FITTINGS MAY ALSO BE NECESSARY.

Notes:

1. Item 4 and 455003 sampling port adapter (not shown) come from Trico corporation. Sampling collection supplies not provided.
2. Items 9 is reused from components supplied with the gearbox from the factory.
3. Hydra-lock breather will be supplied standard as shown. Other Dodge breathers are optional and will need to be requested at the time of ordering.

Item No.	Part Number	Description	Qty.
1	034530024EC	3/4" NPT X 3" PIPE NIPPLE	1
2	034720005AC	3/4" NPT TEE	3
3	453304	3/4" TO 1/4" NPT ADAPTER	1
4	453303-7	PITOT TUBE (7" LONG)	1
5	034530064EC	3/4" NPT X 8" PIPE NIPPLE	2
6	034630005AC	3/4" NPT PIPE COUPLING	4
7	034530016EC	3/4" NPT X 2" PIPE NIPPLE	2
8	095967	3/4" NPT BALL VALVE	1
9	430064	3/4" NPT MAGNETIC PLUG	(NOTE 2)
10	034530048EC	3/4" NPT X 6" PIPE NIPPLE	2
11	967052	OIL SIGHT TUBE	1
12	034630003AC	3/8" NPT PIPE COUPLING	2
13	034530040CC	3/8" NPT X 5" PIPE NIPPLE	1
14	454631-30	HOSE ASSEMBLY	1
15	034600009AC	3/4" TO 3/8" NPT ADAPTER	2
16	034670005AC	3/4" NPT (90° STREET ELBOW)	2
17	964363	HYDRA-LOCK BREATHER	(NOTE 3)
18	034530096EC	3/4" NPT X 12" PIPE NIPPLE	1

Dodge Industrial, Inc.
1061 Holland Road
Simpsonville, SC 29681
+1 864 297 4800

© DODGE INDUSTRIAL, INC.
AN RBC BEARINGS COMPANY



All Rights Reserved. Printed in USA.
MN1704 REVA 11/24