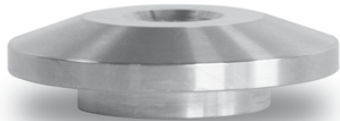


Epoxy Mount Adapter Installation Manual

These instructions must be read thoroughly before installation or operation. This instruction manual was accurate at the time of printing. Please see dodgeindustrial.com for updated instruction manuals.



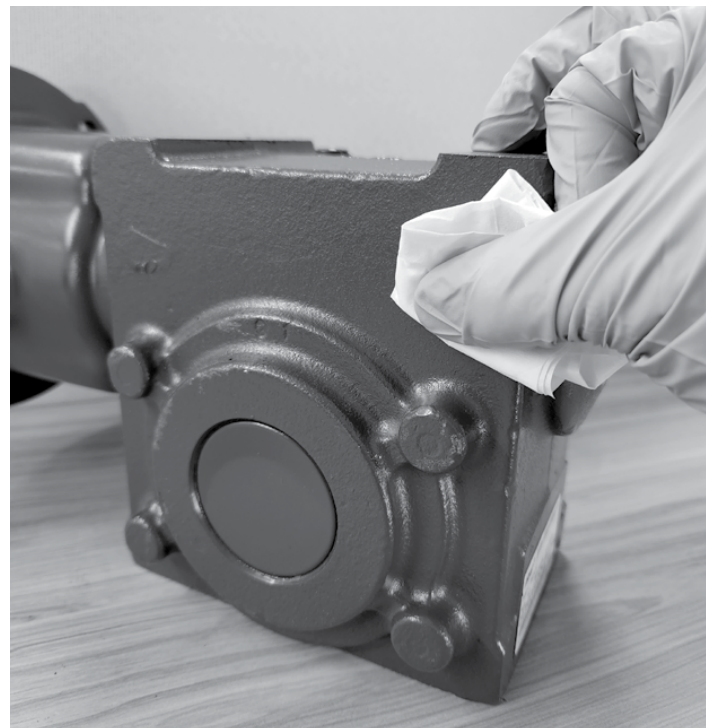
Part Number - 749998



Part Number - 750013

INSTALLATION

The epoxy mount adapter can be used to attach sensors to many different surfaces, unlocking new monitoring capabilities. The epoxy mount adapter consists of a mounting adapter and a two-part adhesive.



1. Prepare the mounting surface by cleaning thoroughly with rubbing alcohol to remove any dust, oils, or loose paint.



2. Cut approximately one-fifth of the epoxy stick and unwrap the film from the section of cut epoxy.

WARNING: Because of the possible danger to person(s) or property from accidents which may result from the improper use of products, it is important that correct procedures be followed. Products must be used in accordance with the engineering information specified in the catalog. Proper installation, maintenance and operation procedures must be observed. The instructions in the instruction manuals must be followed. Inspections should be made as necessary to assure safe operation under prevailing conditions. Proper guards and other suitable safety devices or procedures as may be desirable or as may be specified in safety codes should be provided, and are neither provided by Dodge® nor are the responsibility of Dodge. This unit and its associated equipment must be installed, adjusted and maintained by qualified personnel who are familiar with the construction and operation of all equipment in the system and the potential hazards involved. When risk to persons or property may be involved, a holding device must be an integral part of the driven equipment beyond the speed reducer output shaft.



3. Thoroughly mix the cut section of epoxy together by kneading for one minute until a consistent color is reached.



6. Clean up the edges and let cure for at least 30 minutes or until hard to the touch.



4. Roll the epoxy into a cylinder and wrap around the stepped side (base) of the adapter.



The epoxy mount adapter is now ready for use to install a sensor. To install, tighten the sensor onto the adapter. Align the directional arrow on top of the sensor with the direction of the shaft.



5. Press the adapter firmly onto the prepared mounting surface.

Dodge Industrial, Inc.
1061 Holland Road
Simpsonville, SC 29681
+1 864 297 4800

