

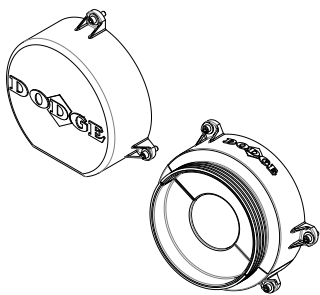
TA Family Bushing Covers and Inboard Shaft Guard Instruction Manual

These instructions must be read thoroughly before installation or operation. This instruction manual was accurate at the time of printing. Please see dodgeindustrial.com for updated instruction manuals.

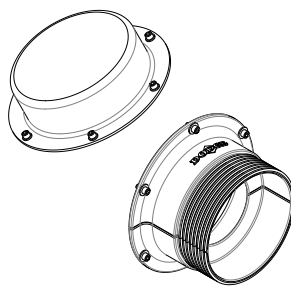
WARNING: To ensure the drive is not unexpectedly started, turn off and lock-out or tag power source before proceeding. Failure to observe these precautions could result in bodily injury.

WARNING: All products over 25 kg (55 lbs) are noted on the shipping package. Proper lifting practices are required for these products.

TA FAMILY BUSHING COVERS



TXT-E Bushing Covers



TAIL Bushing Covers

Each bushing kit will come with the following parts:

Split-Bushing Kit:

- Two bushing covers
- Flat washers ①
- Hex head bolts ①

Closed-Bushing Kit ①:

- One bushing cover
- Flat washers ①
- Hex head bolts ①

TXT Series E, Torque-Arm™ II, and Motorized Torque-Arm II reducers have holes drilled and tapped in the face of the housing around the hollow output shaft for installation of these bushing covers.

The instructions on this page are for the bushing cover kit numbers in Table 1.

WARNING: Because of the possible danger to person(s) or property from accidents which may result from the improper use of products, it is important that correct procedures be followed. Products must be used in accordance with the engineering information specified in the catalog. Proper installation, maintenance and operation procedures must be observed. The instructions in the instruction manuals must be followed. Inspections should be made as necessary to assure safe operation under prevailing conditions. Proper guards and other suitable safety devices or procedures as may be desirable or as may be specified in safety codes should be provided, and are neither provided by Dodge® nor are the responsibility of Dodge. This unit and its associated equipment must be installed, adjusted and maintained by qualified personnel who are familiar with the construction and operation of all equipment in the system and the potential hazards involved. When risk to persons or property may be involved, a holding device must be an integral part of the driven equipment beyond the speed reducer output shaft.

INSTALLATION

1. Insert bolts through washers.
2. Hold bushing cover up to reducer face and align holes in cover to threaded holes in reducer face ②.
3. Ensure the reducer surface is clean where the covers will be installed.
4. Insert bolts through cover and thread into holes in reducer.
5. Tighten bolts with torque wrench to 20-40 in-lbs.

Table 1 – Bushing Cover Kit Numbers

AGMA Case Size	Reducer	Bushing Cover Kit Part Numbers	
		Closed Cover	Split Cover
107	TA0107L	900142	020544
	TA1107H	901142	020545
	TXT1E	241717	241716
115	TA2115H	902142	020546
	TXT2E	242717	242716
203	TA3203H	903142	020547
	TXT3E	243717	243716
207	TA4207H	904142	020548
	TXT4E	244717	244716
215	TA5215H	905142	020549
	TXT5E	245686	245685
307	TA6307H	905142	020550
	TXT6E	246799	246798
315	TA7315H	907142	020551
	TXT7E	247683	247682
407	TA8407H	908142	020552
	TXT8E	248716	248706
415	TA9415H	909142	020553
	TXT9E	249717	249716
507	TA10507H	910142	020554
	TXT10E	272867	272866
608	TA12608H	912142	020555
	TXT12E	272887	272886

- ① 4 required on TA0107L and TA1107H
6 required on TA2115H through TA12608H
3 required on TXT1E through TXT10E
4 required on TXT12E

TA FAMILY INBOARD SHAFT GUARD



Inboard Shaft Guard Extension Inboard Shaft Guard Kit

The instructions on this page are for the Inboard Shaft Guard. The Inboard Shaft Guard kit includes inboard shaft extensions and split-bushing covers. Each Inboard Shaft Guard extension kit will come with two guard extension half pieces, flat washers ③, hex socket head cap screws ③, and hex nuts ③. Table 2 shows inboard Shaft Guard kits as well as the inboard Shaft Guard Extensions for all TA family.

INSTALLATION

1. Before installing split-bushing covers and extension, measure the distance between the face of the gearbox and the connecting equipment, as shown in Figure 1.

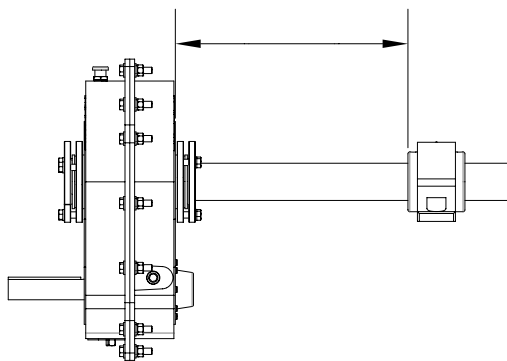


Figure 1 - Distance to Measure for Cut

2. Once this distance is known, use the reference measurements on the OD of the extension to cut it to the appropriate length. For longer distances, it may be beneficial to have the extension reach over the top of the connecting piece of equipment for extra support.
3. Follow instructions on installing split-bushing covers on the previous page ②.
NOTE: The markings shown on the OD of the extension already factor in the length of the adapter, thus there should be no additional measurement factors necessary.
NOTE: In cases with stepped shafts, the internal baffles can be modified by the customer.
4. With the extensions cut to length, use the ribs located on the inside of the extensions to clamp around the ribs on the outside of the adapter, as seen in the cutaway (Figure 2).
5. Pinch the flanges of both halves tight to ensure the ribs of the extension are fully engaged with the ribs of the adapter.

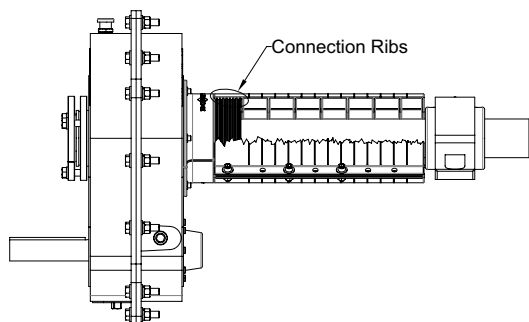


Figure 2 - Extension Connection to Cover

NOTE: The ribs allow for an adjustment in 1/4" increments if necessary. A minimum of three ribs should be engaged between the adapter and extension if adjustments are required.

6. Install a bolt on each side of the extension in the holes located beside the ribs and hand-tighten.
7. With the first two bolts secured, place hardware in the appropriate holes that remain. There are more holes than hardware sets for larger sizes.
8. Once all bolts are installed, torque to appropriate values ④. Figure 3 shows the complete assembled Inboard Shaft Guard on the gearbox.

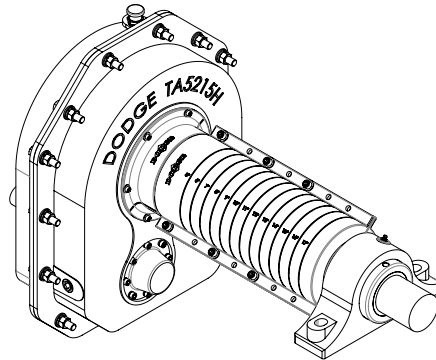


Figure 3 - Assembled Inboard Shaft Guard

Table 2 - Inboard Shaft Guard Kit and Extension Numbers

AGMA Case Size	Reducer	Inboard Shaft Guard Kit	Inboard Shaft Guard Extension
107	TA0107L	TASHAFTGUARD-00	020568
	TA1107H	TASHAFTGUARD-01	020569
	TXT1E	TXTSHAFTGUARD-01	020569
115	TA2115H	TASHAFTGUARD-02	020570
	TXT2E	TXTSHAFTGUARD-02	020570
203	TA3203H	TASHAFTGUARD-03	020571
	TXT3E	TXTSHAFTGUARD-03	020571
207	TA4207H	TASHAFTGUARD-04	020572
	TXT4E	TXTSHAFTGUARD-04	020572
215	TA5215H	TASHAFTGUARD-05	020573
	TXT5E	TXTSHAFTGUARD-05	020574
307	TA6307H	TASHAFTGUARD-06	020574
	TXT6E	TXTSHAFTGUARD-06	020575
315	TA7315H	TASHAFTGUARD-07	020575
	TXT7E	TXTSHAFTGUARD-07	020576
407	TA8407H	TASHAFTGUARD-08	020576
	TXT8E	TXTSHAFTGUARD-08	020577
415	TA9415H	TASHAFTGUARD-09	020577
	TXT9E	TXTSHAFTGUARD-09	020578
507	TA10507H	TASHAFTGUARD-10	020578
	TXT10E	TXTSHAFTGUARD-10	020579
608	TA12608H	TASHAFTGUARD-12	020579
	TXT12E	TXTSHAFTGUARD-12	020579

- ③ 4 required on TA0107L, TA1107H, and TXT1E
6 required on TA2115H through TA5215H and TXT2E through TXT4E
8 required on TA6307H through TA8407H and TXT5E through TXT7E
10 required on TA9415H, TA10507H, TXT8E, and TXT9E
12 required on TX12608H, TXT10E, and TXT12E
- ④ 40 in-lbs for TA0107L through TA4207H and TXT1E through TXT4E
60 in-lbs for TA5215H through TA9415H and TXT5E through TXT8E
100 in-lbs for TA10507H, TA12608H and TXT9E through TXT12E

② Note: For the TXT-E sizes shown in Table 3 below, when a split bushing cover is used with a backstop, the cover will require slight modification for clearance as shown. Use Figure 4 along with Table 3 for modification.

Table 3 – Backstop Interference Modification Dimensions				
	Dimension (inch)			
Reducer	A	B	C	D
TXT1E	1.5	2.0	1.7	1.3
TXT2E	1.7	2.1	2.6	1.7
TXT3E	2.0	1.7	2.3	1.6
TXT105E	3.2	1.3	0.8	0.5
TXT205E	3.3	1.7	1.4	0.7
TXT305E	2.2	1.5	2.2	0.6
TXT405E	2.1	1.5	2.1	0.5
TXT505E	1.0	2.1	4.6	0.9

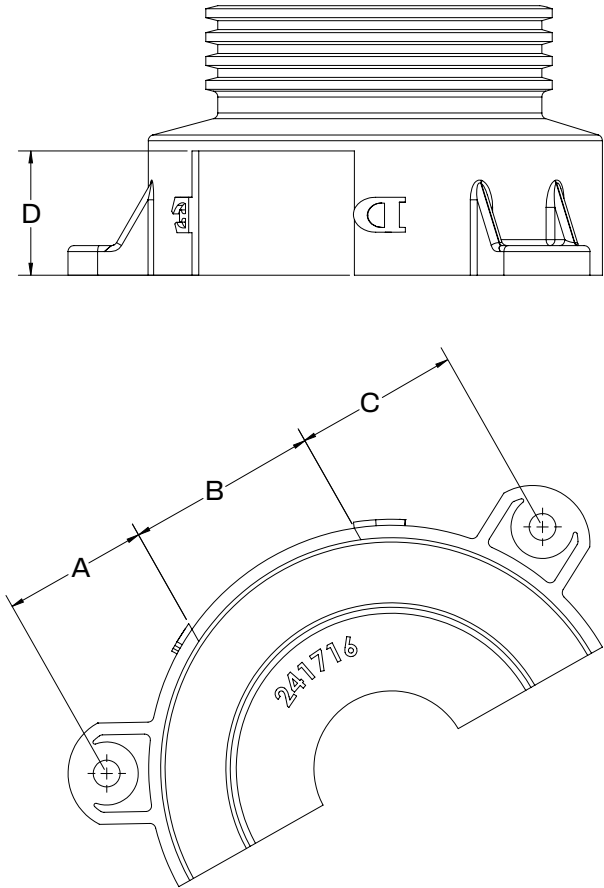


Figure 4 – Modification Layout

Dodge Industrial, Inc.
 1061 Holland Road
 Simpsonville, SC 29681
 +1 864 297 4800

© DODGE INDUSTRIAL, INC.
 AN RBC BEARINGS COMPANY



All Rights Reserved. Printed in USA.
 MN16041 REV-A 07/24