

# Sleevoil RXT® Pillow Blocks

## With External Circulating Oil Lubrication

### Instruction Manual

These instructions must be read thoroughly before installation or operation. This instruction manual was accurate at the time of printing. Please see [dodgeindustrial.com](http://dodgeindustrial.com) for updated instruction manuals.

**CAUTION:** Do not scrape, rebabbit, or otherwise alter this product. Such action adversely affects bearing performance and may result in damage or destruction of equipment.

**WARNING:** Only qualified personnel familiar with the construction and operation of this equipment and the hazards involved should install, adjust, operate and/or service it. Read and understand this manual in its entirety before proceeding. Failure to observe this precaution could result in severe bodily injury or loss of life.

## INSTALLATION

The modular design of this bearing allows the use of multiple types of liners and two or more bore sizes in the same housing.

### TYPES OF LINERS

**‘S’** — Standard liner (fixed or free) has symmetrical thrust faces for bidirectional rotation.

**‘T’** — High thrust, non-expansion (fixed) liner has tapered land thrust faces which **MUST** be oriented with shaft rotation as this type of thrust surface is unidirectional.

### 1. PRE-ASSEMBLY INSTRUCTIONS

Sleeve bearing performance is dependent on proper installation, lubrication and maintenance. Before assembling the bearing, read ALL instructions in this manual and follow all equipment manufacturers’ instructions.

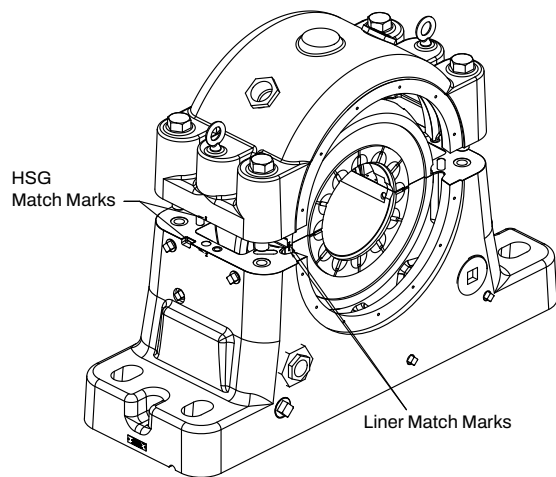
### SLEEVOIL PILLOW BLOCK NAMEPLATE

All Sleevoil housings and liners have nameplates attached to them. These nameplates have a six digit part number which fully identifies the housing and/or liner with any and all factory

**WARNING:** Because of the possible danger to person(s) or property from accidents which may result from the improper use of products, it is important that correct procedures be followed. Products must be used in accordance with the engineering information specified in the catalog. Proper installation, maintenance and operation procedures must be observed. The instructions in the instruction manuals must be followed. Inspections should be made as necessary to assure safe operation under prevailing conditions. Proper guards and other suitable safety devices or procedures as may be desirable or as may be specified in safety codes should be provided, and are neither provided by Dodge® nor are the responsibility of Dodge. This unit and its associated equipment must be installed, adjusted and maintained by qualified personnel who are familiar with the construction and operation of all equipment in the system and the potential hazards involved. When risk to persons or property may be involved, a holding device must be an integral part of the driven equipment beyond the speed reducer output shaft.

modifications to that part. Liner nameplate is pinned to the Sleevoil upper liner near an oil ring inspection hole. Housing nameplate is pinned to the housing foot parallel to the shaft.

### SLEEVOIL PILLOW BLOCK “MATCH MARKS”



All Sleevoil housing and liner halves have match marks permanently stamped above and below the joint. Use these match marks to ensure that parts stay paired and critical machined areas of an assembly are accurately maintained.

**NOTE:** Refer to applicable contract/assembly drawings to verify all parts are available prior to assembly.

Disassemble and thoroughly clean all parts of the pillow block. The installer is the last person to inspect all parts for fit, damage and cleanliness. Care **MUST** be taken to avoid contaminating the internal surfaces of the bearing. Housing caps and bases are match marked and **MUST NOT** be interchanged. Upper and lower liners are also match marked and must not be interchanged

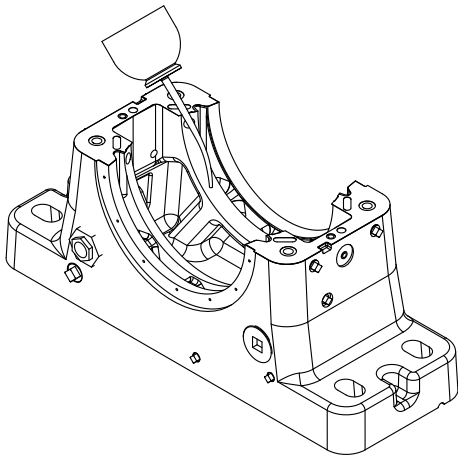
**NOTE:** DO NOT DISCARD SHIMS AT JOINT. THEY ARE USED LATER FOR A CONTROLLED INTERFERENCE FIT OF LINER IN HOUSING. (See page 4)

**CAUTION:** Liner assembly has critical machined surfaces which are easily damaged. Use care when handling to protect these surfaces. Liner parts should be placed on a soft, CLEAN surface. Failure to observe these precautions may result in damage to or destruction of the equipment.

**WARNING:** Rust preventives and solvents can be toxic and/ or flammable. Follow directions and safety procedures recommended by their manufacturers. Failure to observe these precautions could result in bodily injury.

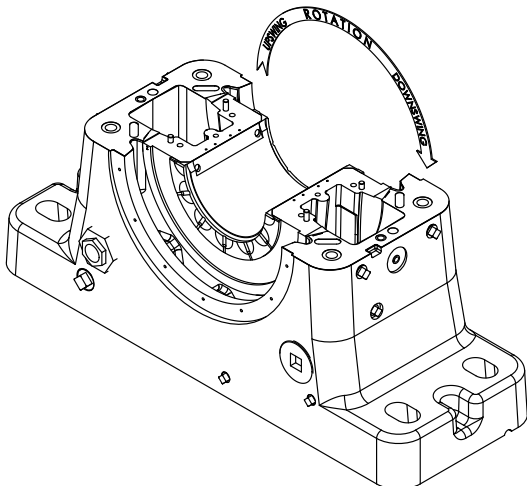
Check the mounting structure to ensure it is rigid, leveled, and well supported. Inspect the shaft to ensure it is smooth (32 micro-finish or better), free of burrs or rough spots and clean. Position the housing base on the pedestal in the position specified on the construction drawing. Do NOT tighten the base to the pedestal.

**2. INSTALLATION OF LOWER LINER AND SHAFT**



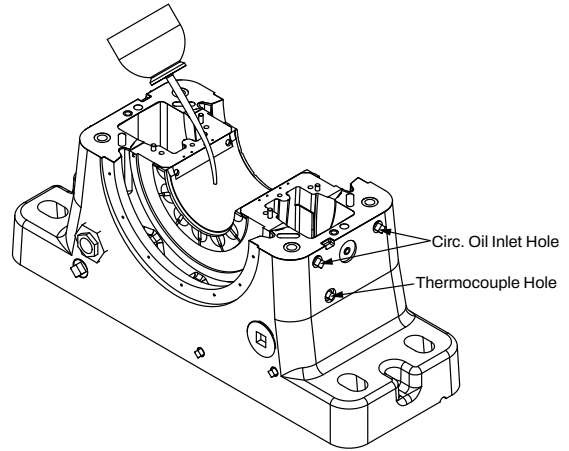
Apply oil to the spherical seats of the housing base and to the spherical seats of the lower liner half. The lower liner half is identified by its continuous babbitted bore surface; the upper liner half has one or two oil ring slot(s) in the center of the babbitted bore.

Set lower liner in housing base so spherical seats of liner are aligned with spherical seats of base. Horizontal split of liner MUST align with horizontal split of housing for anti-rotation pins in upper liner to engage holes in housing cap. Take care that circulating oil inlets and thermocouple holes in liner and housing base are aligned.



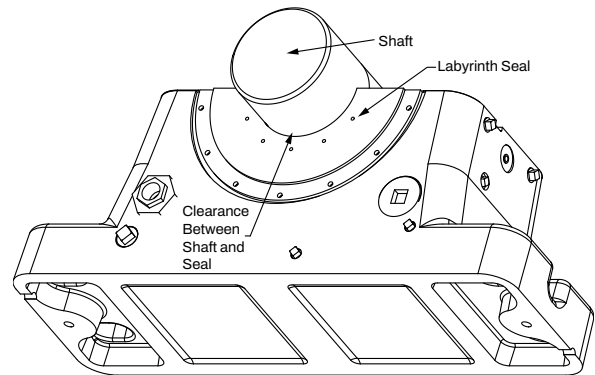
**NOTE:** 'T' liner must be installed in direct relationship with shaft rotation.

Apply oil to the lower liner bore or to the shaft in liner area and CAREFULLY set the shaft in place, taking care not to damage the babbitted surface.



**2.1 LABYRINTH SEAL**

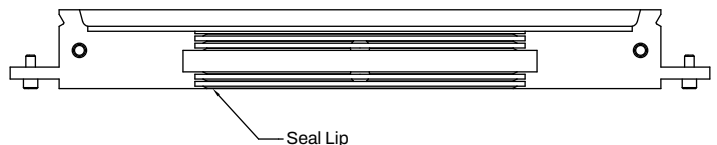
Attach lower half of each oil seal to housing base. Check possible alignment of oil seal by visually noting an equal clearance between seal and shaft at each end of the housing. The seals can be adjusted somewhat but MUST NOT contact the shaft at any point.



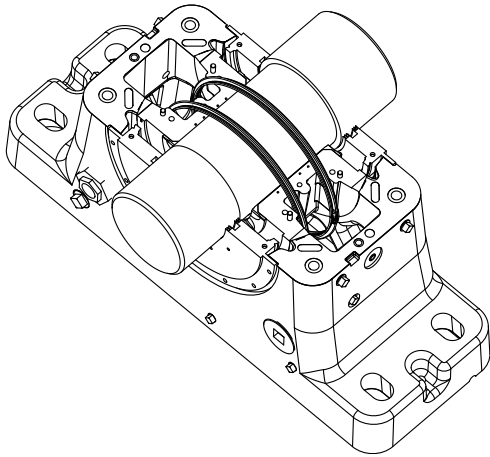
Alignment of pillow block should be accurate since the self-aligning feature of the bearing is to compensate for normal shaft deflection.

Re-shim pillow block, if necessary. Always shim under the bearing pedestal where possible; otherwise, use full length shims under base of pillow block.

**NOTE:** Remove lower half of each labyrinth seal from housing after this preliminary alignment to avoid damaging the lip of the labyrinth.



Place oil ring(s) around outside of liner base and over shaft.



**NOTE: Collar halves are match marked; do NOT assemble halves with different marks.**

Tighten clamp screws to torque specified in Table 2. Collar faces **MUST NOT** be offset at split. Repeat for second collar.

Locate collars tight against shaft shoulders. This will allow 0.015 to 0.035 inch total running clearance between collars and liner thrust faces. Tighten set screws to torque specified in Table 2. Install and tighten jam screws on top of set screws.

Shaft Size (inches)	2-15/16	3-7/16	3-15/16	4-7/16	4-15/16	5-7/16
Clamp Screw	(96) 8	(96) 8	(96) 8	(96) 8	(204) 17	(204) 17
Set Screw	(60) 5	(60) 5	(60) 5	(60) 5	(132) 11	(132) 11

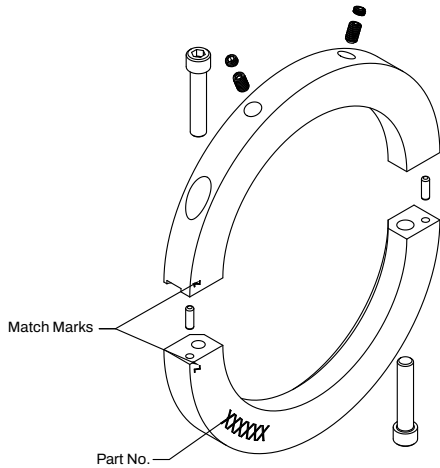
Shaft Size (inches)	6	7	8	9	10	12
Clamp Screw	(360) 30	(360) 30	(900) 75	(900) 75	(1800) 150	(1800) 150
Set Screw	(264) 22	(264) 22	(264) 22	(264) 22	(1320) 110	(1320) 110

Install and tighten four screws in each oil ring using a low strength thread locker.

Oil shaft under oil ring(s). Make sure oil ring(s) rotate freely.

### 3. NON-EXPANSION BEARINGS WITH SPLIT THRUST COLLARS ('S' LINERS ONLY)

Split thrust collars are available for 'S' liners only. Remove clamp screws from collars. Remove jam set screws and back out set screws so they do not protrude into inside diameter of collar.

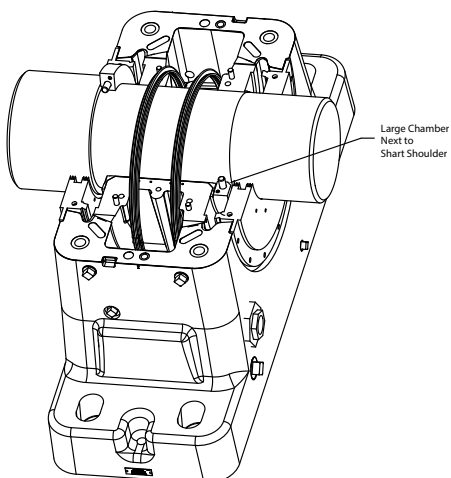
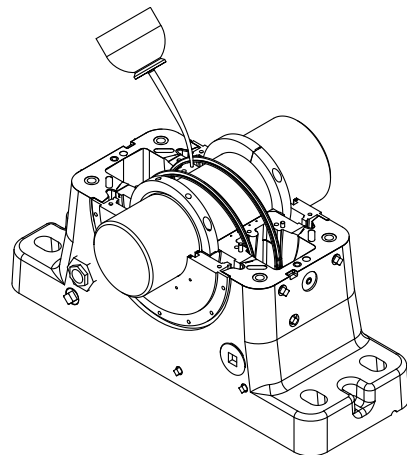


### 4. INSTALLATION OF UPPER LINER

Apply oil to faces of thrust collars next to liner and to shaft in journal area and to journal surface of upper liner.

Locate upper liner in place on lower liner, taking care to align dowel pins and match marks. (The upper liner has a recess(es) for the oil ring(s)). Make sure oil ring(s) rotate freely.

Place one half of collar on shaft with large chamfer next to shaft shoulder. Rotate collar half around shaft and place other half in position.



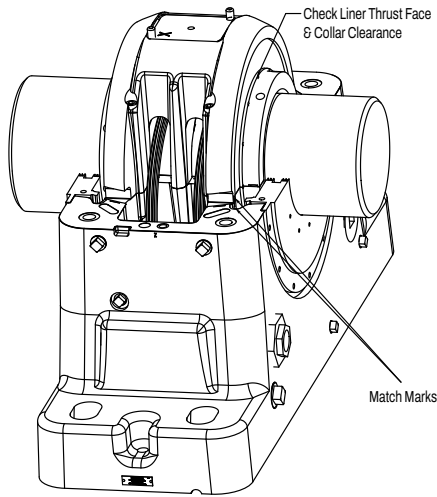
**NOTE: 'T' liners have a rotation direction arrow mounted to top of upper liner; arrow MUST point in same direction as rotation of top of shaft. If not, liner must be removed, reversed and reinstalled so arrow points in proper direction.**

Install and tighten liner cap screws to torque listed in table 3.

Shaft Size (inches)	2-15/16	3-7/16	3-15/16	4-7/16	4-15/16	5-7/16
Liner Cap Screw	(58) 5	(58) 5	(58) 5	(58) 5	(114) 10	(114) 10

Shaft Size (inches)	6	7	8	9	10	12	14
Liner Cap Screw	(114) 10	(114) 10	(510) 43	(510) 43	(1050) 88	(1050) 88	(1050) 88

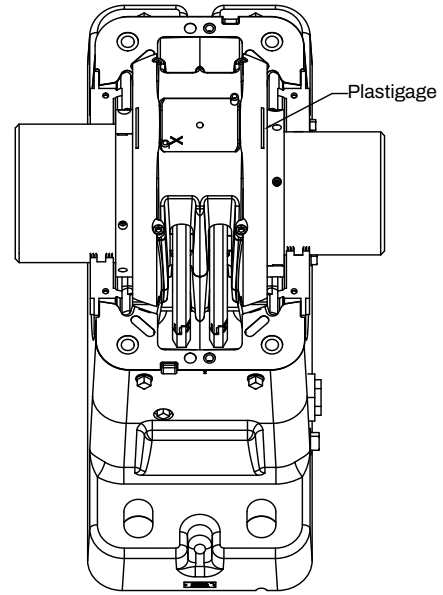
Collars should run parallel to thrust faces of liner within .001 in. Tighten housing base to pedestal. See Table 4 for torque.



Housing Size	3	4	5	6	8	10
Housing to Pedestal Bolts	(2000) 167	(3600) 300	(4600) 383	(8400) 700	(11500) 958	(15000) 1250
Housing to Cap Bolts	(1560) 130	(2280) 190	(2280) 190	(2280) 190	(3240) 270	(3240) 270

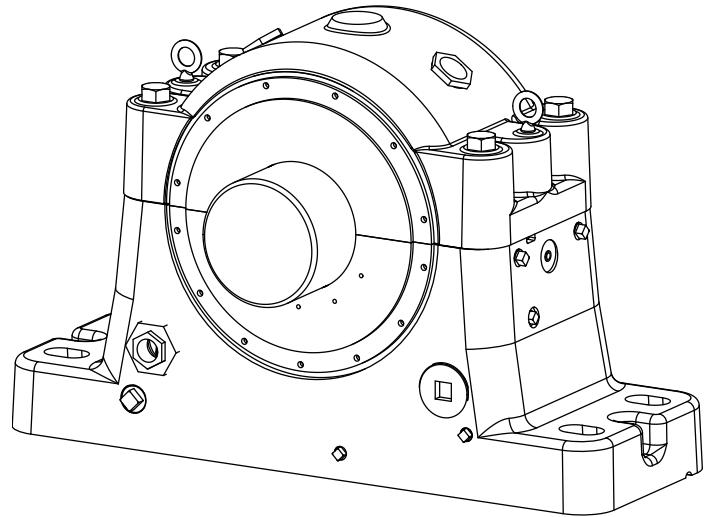
## 5. INSTALLATION OF HOUSING CAP

Position shims on each side of housing. Put a short strip of Plastigage (3 inches) on liner spherical ribs at top of each rib of liner and near the middle of spherical ribs.



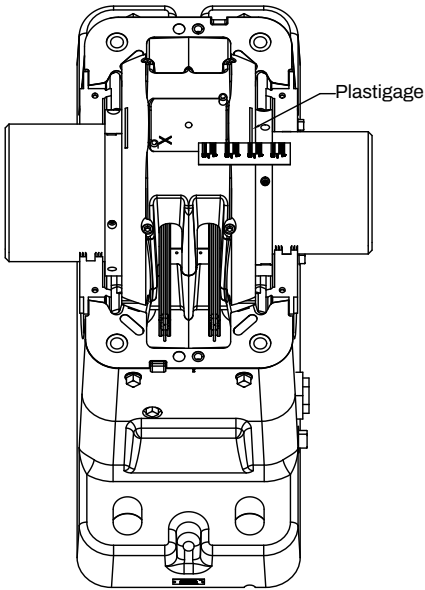
**NOTE: New housing shims are required with replacement liners.**

CAREFULLY set housing cap in place.



**NOTE: Align dowel pin and dowel pin hole in housing halves before lowering cap onto base.**

Tighten housing cap bolts to torque specified in Table 4. Remove cap bolts and housing cap.



Compare the width of the deformed Plastigage with the inch scale on its wrapper. This indicates the clearance between housing and liner.

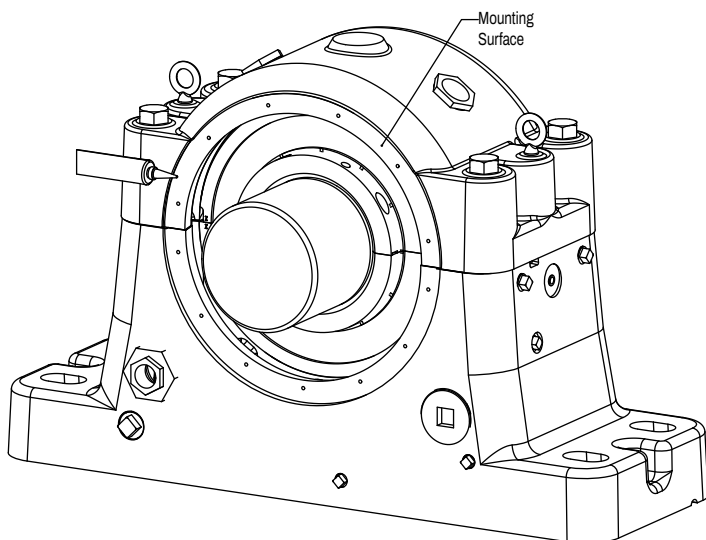
Shims provided are multiple layers of .002 inch thickness each. Separate and remove layers, per Table 5. Do this for both shims. This will provide a controlled interference fit between housing and liner (.003 to .004 in. crush desired).

Clearance Measured (Inches)	Shims Removed
0.001	2
0.002 0.003	3
0.004 0.005	4

Align shims as required. CAREFULLY replace housing cap. Torque cap bolts to values specified in Table 4.

## 6. SEAL INSTALLATION

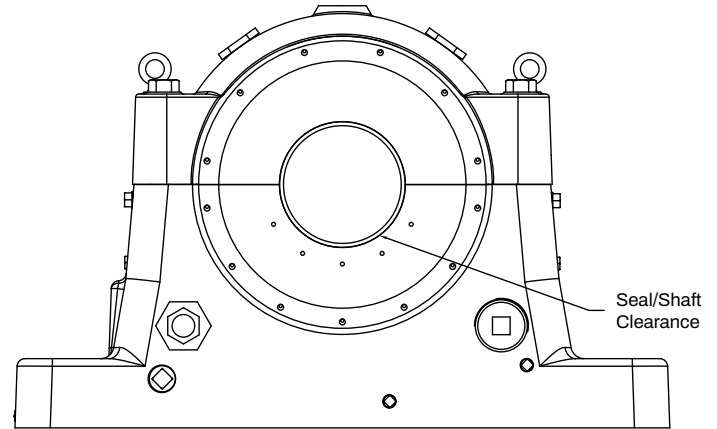
Apply sealant to seal mounting surfaces of housing.



Assemble each seal around shaft and torque clamp screws to value specified in Table 6.

Align seals per values given in Table 6.

**NOTE: Check the construction drawing for seal size and position as three different seal bore sizes can be used on any housing. Seals can be reversed depending on shaft configuration and spacing.**



Shaft Diameter	2-15/16	3-7/16	3-15/16	4-7/16	4-15/16	5-7/16
Bottom of Shaft to Seal	.001	.001	.001	.001	.001	.001
Side of Shaft to Seal	.003 .006	.003 .006	.004 .007	.004 .007	.005 .008	.005 .008

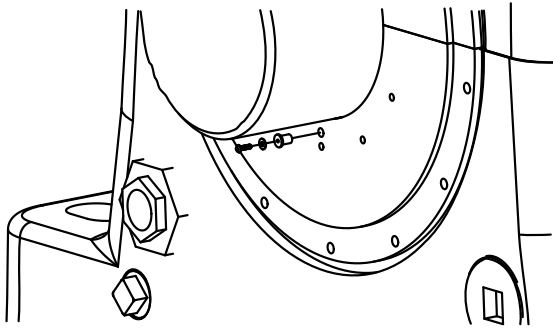
Shaft Diameter	6	7	8	9	10	12	14-1/2
Bottom of Shaft to Seal	.002	.002	.002	.002	.003	.003	.003
Side of Shaft to Seal	.006 .009	.007 .010	.008 .011	.009 .012	.010 .013	.012 .015	.014 .018

Housing Size	3	4	5	6	8	10
Clamp Screws	12	12	12	25	45	45
Mounting Screws	40	40	40	40	40	40

Torque seal mounting screws to value given in Table 7.

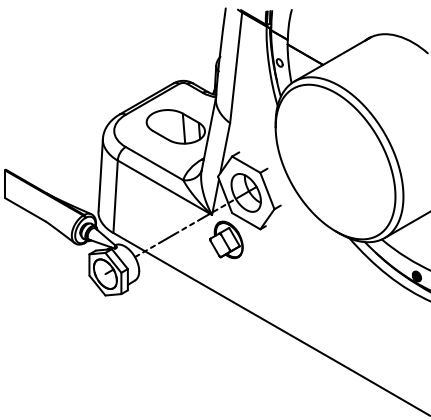
Assemble well-nut, washer and screw

Install well-nut in drain hole on outer face of seal. Tighten screw until well-nut is tight in hole.



## 7. MISCELLANEOUS INSTRUCTIONS

Remove all unused pipe plugs, apply sealant and replace. Tighten securely. Install oil sight gauge in specified location.



**Note:** Each housing base has two pre-drilled holes for doweling housing to pedestal.

## 8. LUBRICATION AND OPERATION

Fill pillow block with the amount of oil specified in Table 8.

Table 8 - Housing Oil Sump Capacity	
Housing Size	Oil Capacity in Gallons (Quarts)
3	1-1/4 (5)
4	1-7/8 (7-1/2)
5	2-1/2 (10)
6	3-1/4 (13)
8	5-1/8 (20-1/2)
10	7-3/4 (31)

**NOTE:** Since the satisfactory operation of the pillow block depends almost entirely on the oil film being maintained between the shaft and bearing liner surface, use a high grade straight mineral oil with rust and oxidation (R & O) inhibitors and antifoam agents. Oil viscosity is determined by the equipment manufacturer and normally specified on the construction drawing or in the operating manual. Information regarding qualities and properties of specific oils should be referred to the lubricant manufacturer.

Approximate viscosity:

ISO 32 — 158 SUS at 100 °F; 44 SUS at 210 °F  
 ISO 68 — 335 SUS at 100 °F; 55 SUS at 210 °F  
 ISO 100 — 495 SUS at 100 °F; 66 SUS at 210 °F

### 8.1 CIRCULATING OIL

When pillow block is arranged for circulating oil, the pressurized oil is delivered to the 2 openings on the downswing side of the pillow block when the radial load is directed into the base and the upswing side when the radial load is directed into the cap. Inlet lines should have flow control valves and an oil flow indicator. Each inlet should receive an equal amount of oil.

Drain piping should be vented and of adequate size to drain oil from the bearing at the specified flow rate. The housing drain must be directed straight down into a return drain sloping away at a 15° or greater angle. Drain lines connect to the pillow block in the location used for the oil level gauge. Use both drains for more effective draining. The oiling system must have a means of filtering the oil to remove any contaminating particles. (We recommend a 25 micron filter or better.) Use of both drain lines is recommended for non-expansion bearing. The circulating oil unit should be ran a minimum of 2 hours to clean the lines. Filters are to be changed and the unit restarted for another 2 hours. Check filter again and if clean proceed with fan start-up. Make sure lube unit is running prior to starting the fan.

**NOTE:** All plumbing should be cleaned and flushed before being connected to the pillow block. These systems should be tested before the bearing is put into operation.

**NOTE:** Bearings should NOT be stored outdoors before installation. For extended or outdoor storage, contact equipment manufacturer for special precautions against corrosion.

**NOTE:** Bearings (and shafts) allowed to set idle for extended periods after being run MUST be protected against corrosion. If the unit cannot be run for several minutes at least once a week, consult equipment manufacturer for special lubrication instructions.

### 8.2 TEMPERATURE

The bearing temperature will increase after start-up until its normal operating level is reached. Some fluctuation due to ambient temperature change is normal, but a drastic change MUST be investigated. Normal running temperature should not exceed 180°F. (Check with equipment manufacturer to see if another operating temperature has been specified.) Low ambient and operating temperatures can be as harmful to the bearing as high temperatures. A heater and thermostat is required for such applications.

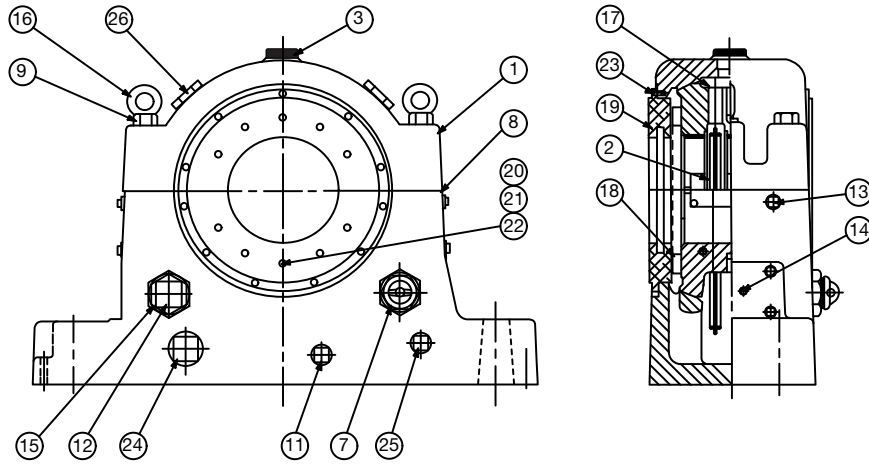
### 8.3 Minimum Temperature at Start-Up

ISO 32 oil, 60 °F  
 ISO 68 oil, 85 °F  
 ISO 100 oil, 100 °F

### 8.4 Vibration

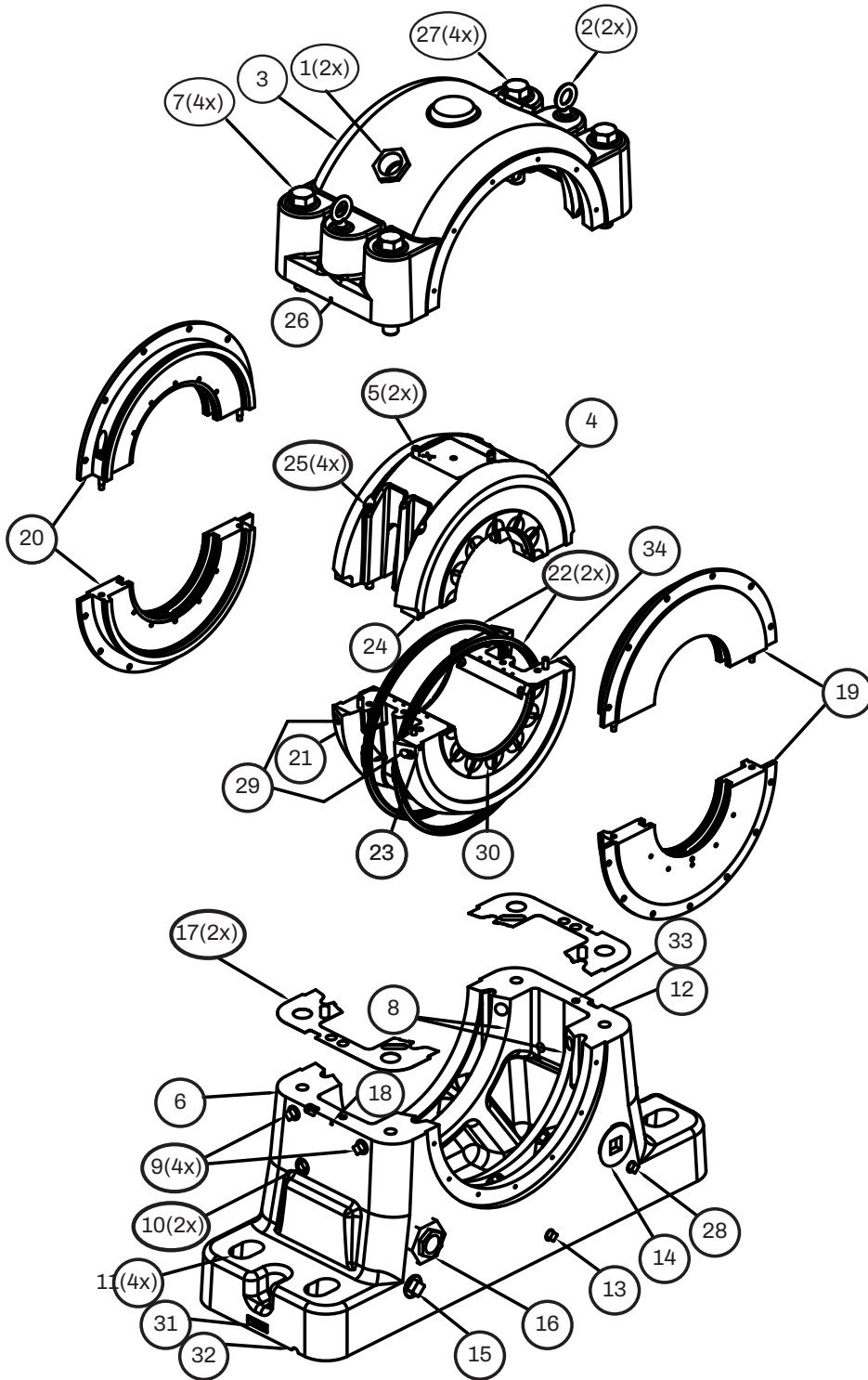
Any significant vibration or imbalance MUST be corrected. Check with equipment manufacturer for acceptable conditions.

RXT Parts Diagrams



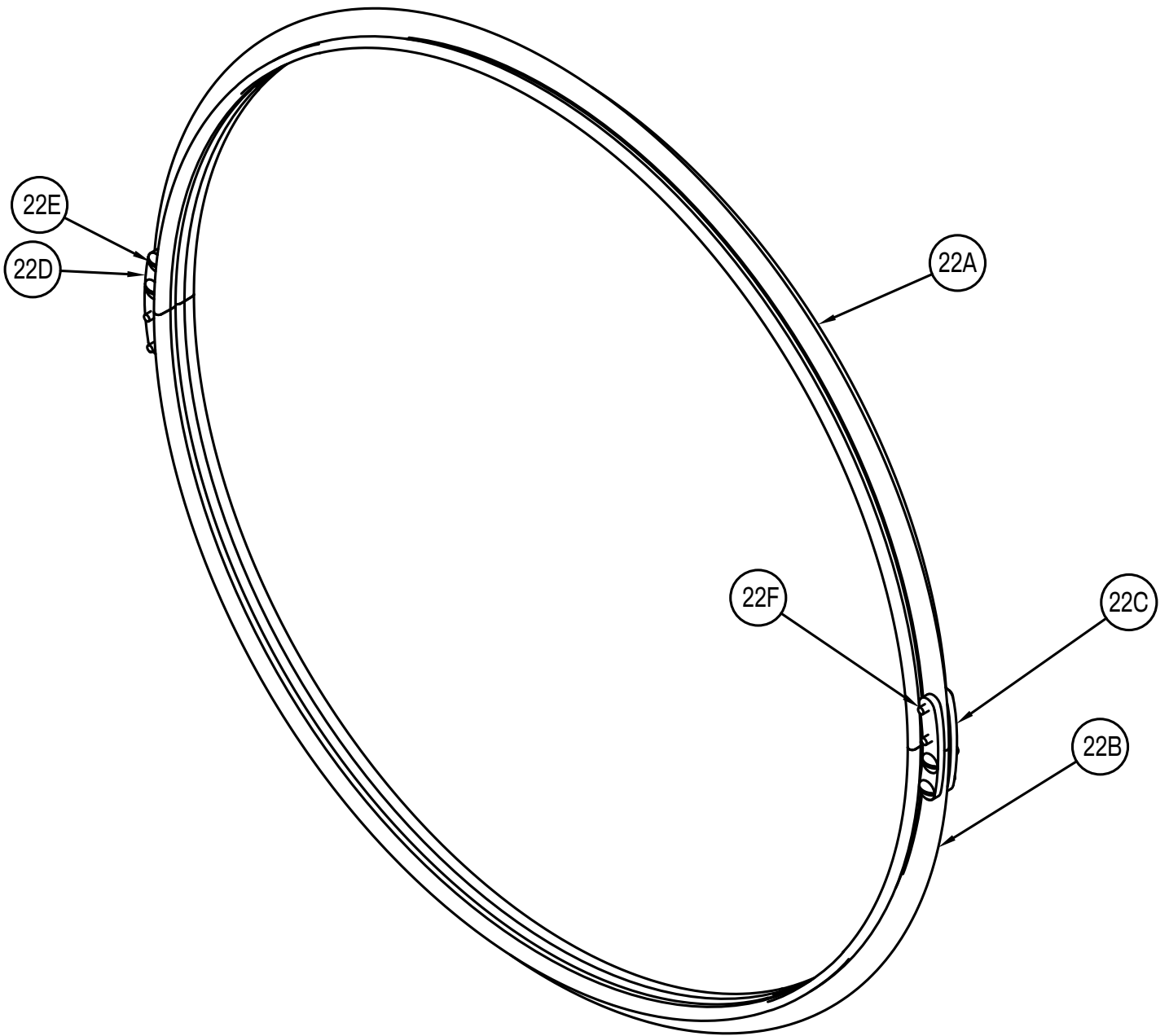
RXT REPLACEMENT PARTS																				
ITEM	DESCRIPTION	NO. REQ'D	Size																	
			3		4		5		6		8		10							
1	Modular Housing Assembly	1	134500		134501		134502		134503		134504		134505							
2	T-section Oil Ring	1,2	130057 (1)		130059 (1)		130062 (1)		130066 (2)		130068 (2)		130073 130071 (2)							
3	• Inspection Cover	1	432197		432197		432197		405043		405043		405043		405043					
7	• Oil Gage	1	432197		432199		432199		432198		432198		432198		432198					
8	• Housing Shim	2	134552		134558		134564		134570		134576		134582		134582					
9	• Housing Bolt	4	411607		411305		411548		411205		411609		411226		411226					
10	• Dowel Pin	2	420088		420088		420088		420144		420144		420144		420144					
11	• Drain Plug	1	430012		430012		430012		430012		430012		430012		430012					
12	• Oil Level Plug	2	430014		430014		430014		430014		430014		430014		430014					
13	• Circulating Oil Plug	4	430017		430019		430019		430022		430022		430022		430022					
14	• Thermocouple Plug	2	430012		430012		430012		430012		430012		430012		430012					
15	• Reducer Bushing	1	-		-		-		430157		430157		430157		430157					
16	• Eye Bolt	2	415138		415138		415138		415138		415138		415138		415138					
	Liner Bore Size		2-15/16"	3-7/16"	3-15/16"	4-7/16"	4-15/16"	5-7/16"	6"	7"	8"	9"	10" 12" 14"							
17	S Liner Assembly	1	134710	134711	134712	134713	134714	134715	134716	134717	134718	134719	134720 134721 134779							
	• Liner Cap Screw	4	417064		417066		417092		417092		417210		417244		417244					
	• Groove Pin	2	409080		409082		409081		409081		409081		409081		409081					
*	• Dowel Pin	2,4	420042 (2)		420053 (2)		420053 (2)		420053 (4)		420066 (4)		420088 (4)		420088 (4)					
17	T Liner Assembly	1	134510	134511	134512	134513	134514	134515	134516	134517	134518	134519	134520	134521						
	• Groove Pin	2	409080		409082		409081		409081		409081		409081		409081					
	• Dowel Pin	2,3	420042 (2)		420052 (2)		420052 (2)		420053 (2)		420064 (3)		420080 (3)		420080 (3)					
18	Thrust Collar (S Liner Only)	2	134880 134881		134882 134883		134884 134885		134886 134887		134888 134889		134890 134891		134890 134891					
	• Screw	4	417050 417050		417050 417053		417093 417093		417117 417117		417188 417188		417236 417236		417236 417236					
	• Dowel Pin	4	420040 420040		420040 420040		420043 420043		420043 420043		420043 420043		420080 420080		420080 420080					
	• Set Screw	4	400022 400022		400022 400022		400056 400056		400090 400090		400090 400090		400186 400186		400186 400186					
	• Jam Set Screw	4	415060 415060		415060 415060		400061 400061		400115 400115		400115 400115		400211 400211		400211 400211					
	Seal Bore Size		0215	0307	0407	0315	0407	0600	0415	0507	0800	0600	0700	1000	0800	0900	1200	1000	1200	1450
19	Seal		134860	134861	134863	134864	134866	134867	134869	134870	134872	134873	134875 134876							
			134862		134865		134868		134871		134874		134877							
20	• Shoulder Screw	4	417043		417043		417043		411281		417103		417103		417103					
21	• Well-Nut	2	465435		465435		465435		465435		465435		465435		465435					
22	• Washer	2	419065		419065		419065		419065		419065		419065		419065					
22	• Screw	2	416500		416500		416500		416500		416500		416500		416500					
23	• Seal Screw		411035 (14)		411035 (18)		411035 (18)		411035 (22)		411035 (26)		411035 (30)		411035 (30)					
24	Heater Plug	1	430017		430017		430017		430017		430017		430017		430017					
25	Thermostat Plug	1	430012		430012		430012		430012		430012		430012		430012					
26	Inspection Cover	2	-		-		-		432198		432199		432199		432199					

# PILLOW BLOCK ASSEMBLY

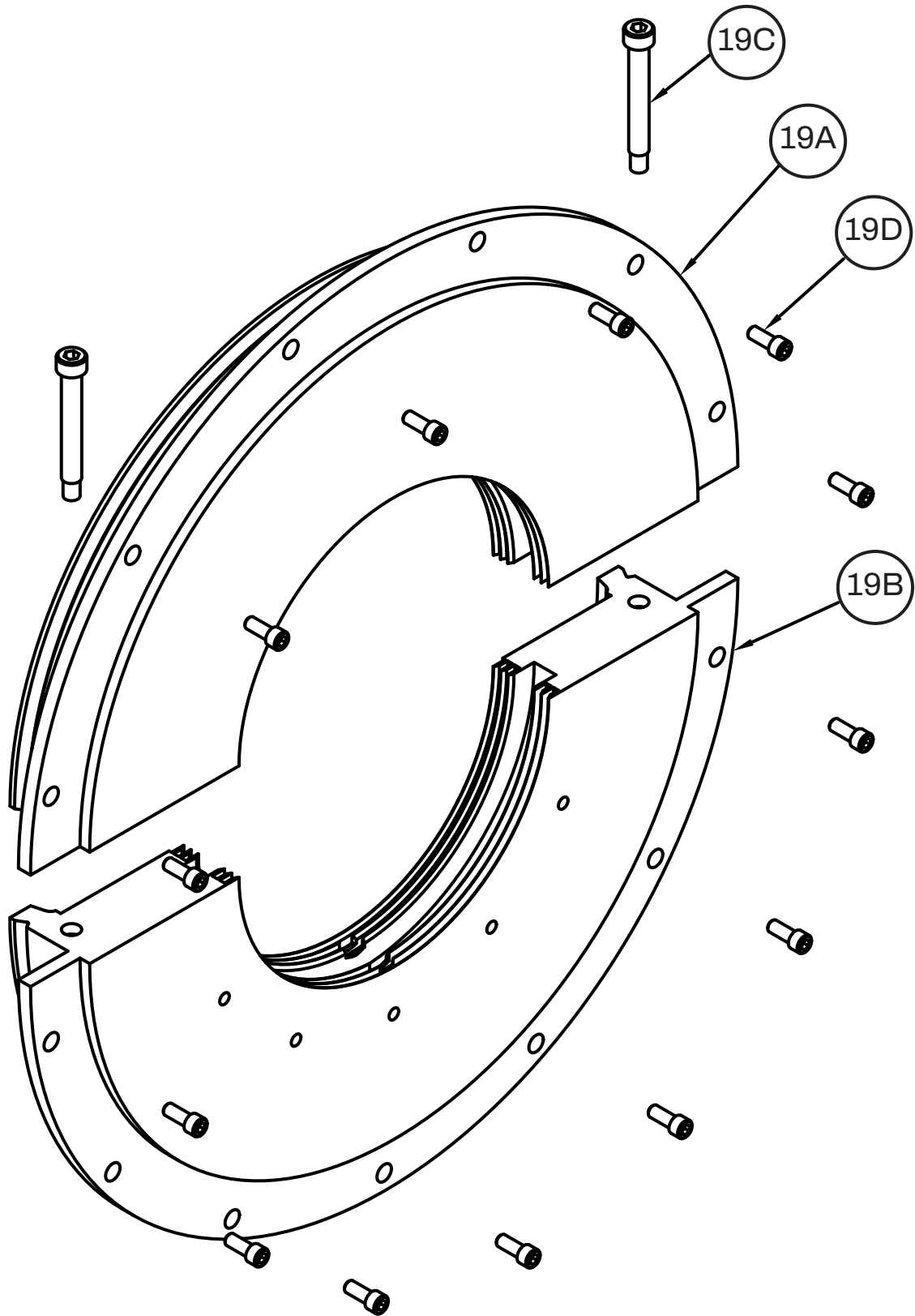


- 1 Inspection cover
- 2 Eye bolt
- 3 Housing cap – top half
- 4 Upper liner – top half
- 5 Anti-rotation pin
- 6 Housing base – lower half
- 7 Housing cap bolts
- 8 Housing spherical seat
- 9 Circulating oil inlet hole (2 each side)
- 10 Thermocouple/RTD hole (one each side)
- 11 Base foot mounting holes
- 12 Vibration detector hole
- 13 Housing drain hole
- 14 Oil level gage or circulating oil hole
- 15 Oil sump heater hole
- 16 Same as 14
- 17 Housing shim
- 18 Housing match mark - base
- 19 Aluminum labyrinth seal
- 20 Aluminum labyrinth seal
- 21 Lower liner – bottom half
- 22 T-section Oil Rings
- 23 Liner match mark - lower
- 24 Liner match mark - upper
- 25 Liner cap screws
- 26 Housing match mark - cap
- 27 Housing cap bolts
- 28 Thermostat hole
- 29 Circulating oil holes
- 30 Liner thrust face (S-type or T-type)
- 31 Name plate
- 32 Weep hole
- 33 Housing halves locating dowel pin
- 34 Liner halves locating dowel pin

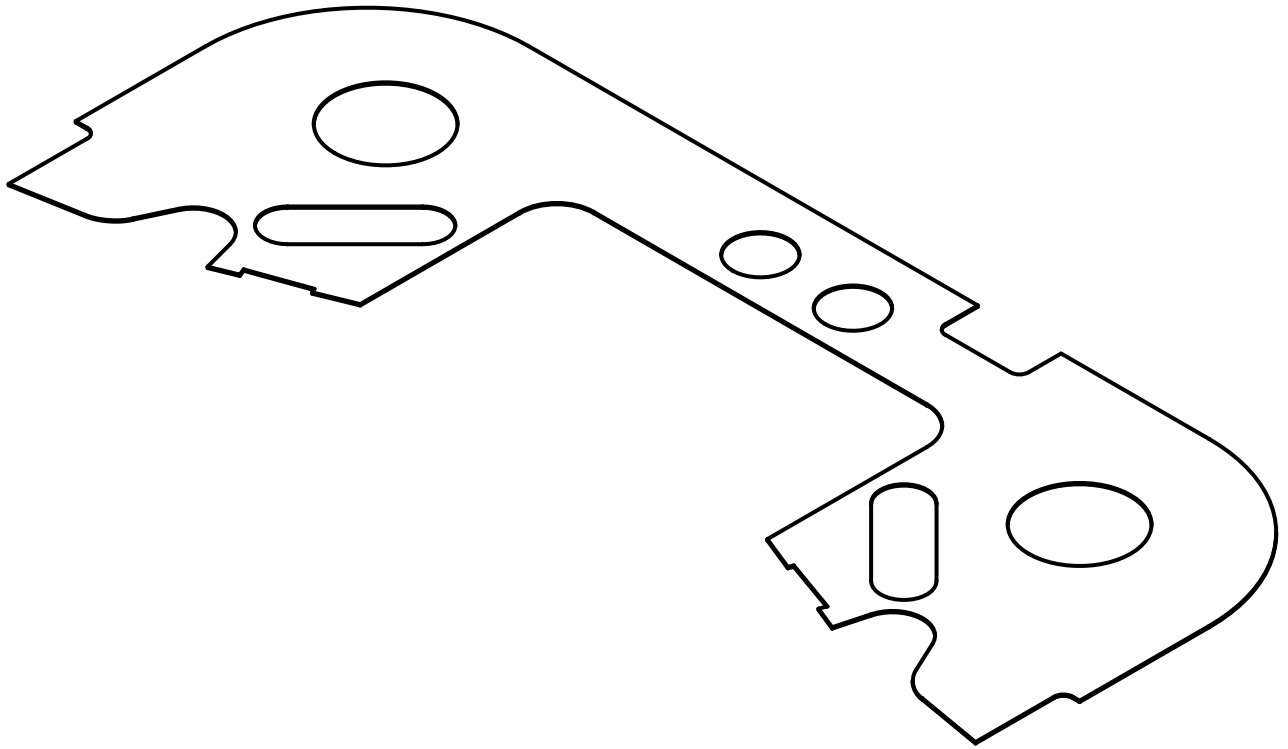
# OIL RING ASSEMBLY



# LABYRINTH SEAL ASSEMBLY



SHIM



**Dodge Industrial, Inc.**  
1061 Holland Road  
Simpsonville, SC 29681  
+1 864 297 4800

