

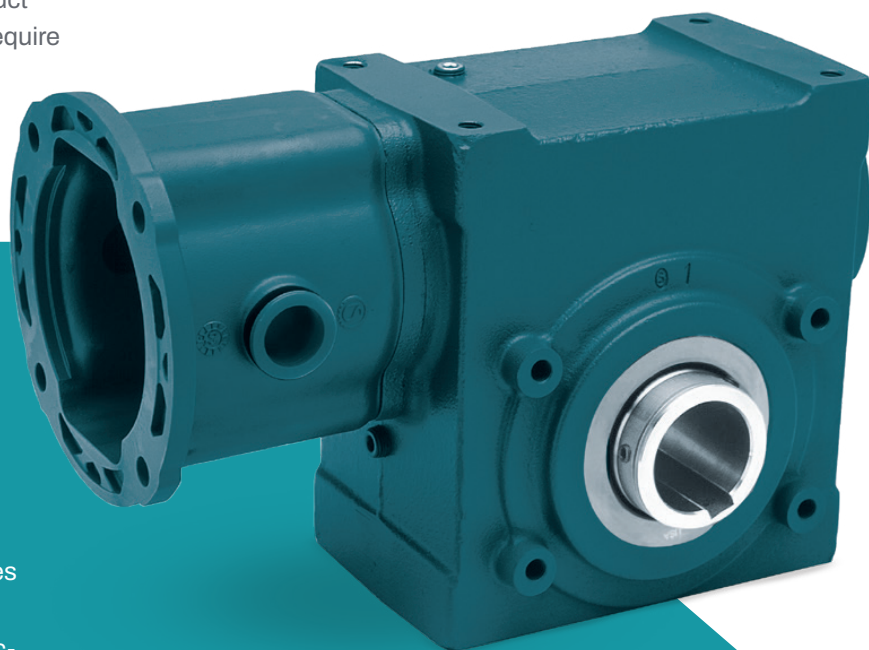
GEARING

Metric Tigear-2

Dodge products have a legacy of reliability, innovation, and safety. The Metric Tigear-2 gear reducer is designed with advanced seals and precision-cut gearing to meet the needs of customers and their applications. This maintenance-free worm gear is enclosed with a ventless sealing system and comes standard with premium food-grade PAG synthetic lubricant, which is a Dodge standard.

Metric Tigear-2 maintains a legacy of unmatched productivity and is now available with complete metric compatibility. The advanced design of the Metric Tigear-2 reducer product line provides extreme flexibility for applications that require torque from 49 Nm to 204 Nm.

This design features metric output dimensions, metric hardware, and a durable IEC three-piece coupled input. Metric Tigear-2 is available in solid-shaft and hollow-bore outputs, making it perfect for any application.



Long lifecycle

- Precision-cut gearing made with fine-grain bronze provides maximum durability and minimum wear
- H1 food-grade PAG synthetic lubricant allows greater efficiency and lower operating temperatures compared to other synthetic lubricants
- HNBR seals feature a one-of-a-kind hydrodynamic-wave design that provides five times the life compared to standard NBR seals
- HNBR seals allow for better performance than Viton in a wider range of operating temperatures
- Tapered roller bearings provide industry-leading overhung load ratings for long life in belted and shaft-mounted applications

Ready to install

- Factory-filled with H1 food-grade PAG synthetic lubrication for any mounting position
- Ventless design eliminates oil contamination

Comprehensive offering

- Four case sizes covering center distances from 44 mm to 67 mm and up to 204 Nm of torque
- Three-piece coupled input provides protection against shock loads and unpredictable vibrations
- Offered with solid-shaft and hollow-output configurations
- Ratios available from 5:1 to 60:1

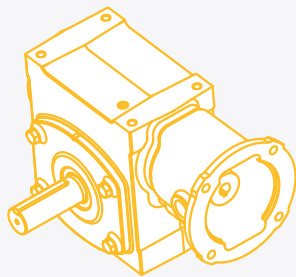
Easy to Order

Sizes	Input styles	Ratios		Outputs	Motor frames	Special options
17M = 44 mm c.d.	A - Three-piece coupled	05	20	L	71 = IEC71	Refer to Tigear catalog for full list and details
20M = 51 mm c.d.		07	25	R	80 = IEC80	
23M = 59 mm c.d.		10	30	LR	90 = IEC90	
26M = 67 mm c.d.		12	40	H	100 = IEC100	
		15	50			
		18	60			

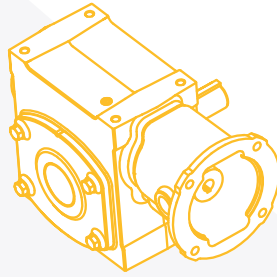
Part Number Example:

17MA15H80 = Size 17M, three-piece coupled input, 15:1 ratio, hollow-bore output, IEC80 motor-frame input

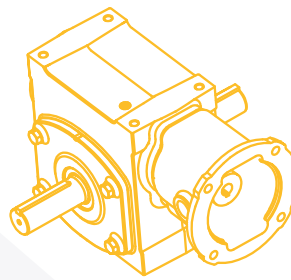
Output Shaft Configurations



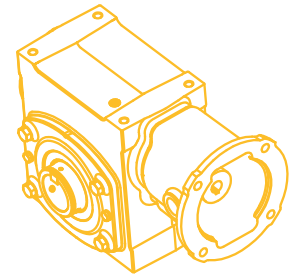
Left



Right



Left and Right



Hollow



Dodge Industrial, Inc.

1061 Holland Road, Simpsonville, SC 29681

+1 864 297 4800

dodgeindustrial.com

Dodge Industrial, Inc. reserves all rights in this document and in the subject matter and illustrations contained therein. We reserve the right to modify contents without prior notice and do not accept responsibility for potential errors or possible lack of information in this document. Any reproduction, disclosure to third parties or utilization of its contents—in whole or in parts—is forbidden without prior written consent of Dodge Industrial, Inc.

© Copyright Dodge Industrial, Inc. All rights reserved. Specifications subject to change without notice.
An RBC Bearings company.

FL2RW02-7.22