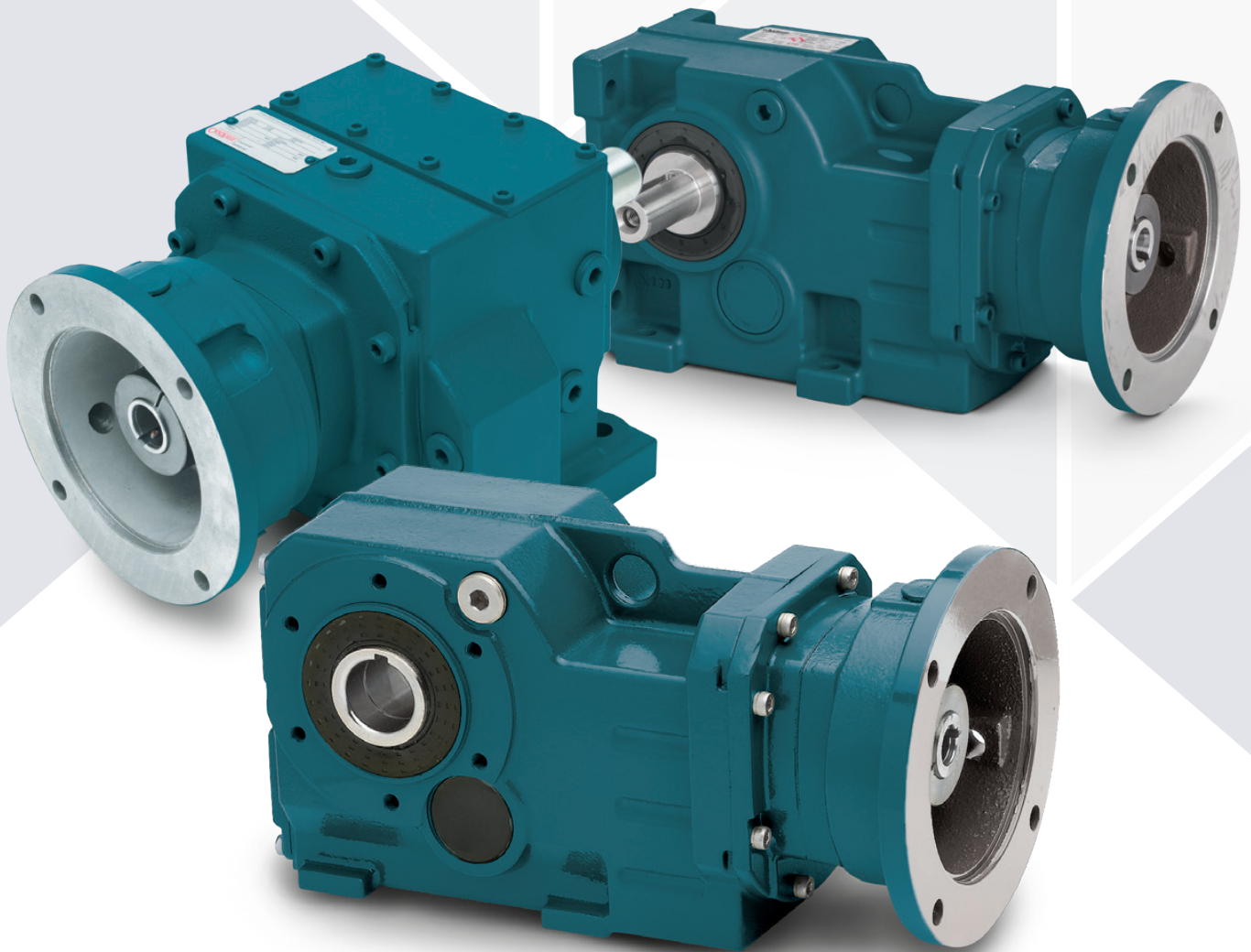


GEARING

# Quantis®

Stock reducer solutions



## In-stock reducer solutions

Get a Quantis gear reducer straight off the shelf and into your application faster than ever.

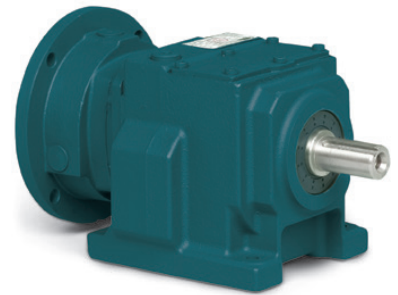
The versatile and efficient gearing solution is designed for reliability, from its durable case-hardened helical gearing to its industry-leading sealing system, to maximize your uptime.

True to the Dodge® standard, every single unit is quality tested at the factory before shipment—providing you with peace of mind.

### Features and benefits

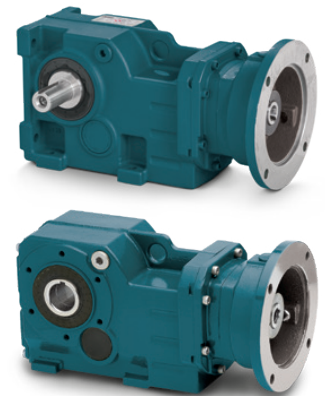
#### In-line helical (ILH)

- Achieves greater torque ratings and extended service life with case-hardened, ground-helical-alloy steel gears
- High-strength, cast-iron housing
- Dimensionally interchangeable with NORD, SEW-EURODRIVE, and other major competitors



#### Right-angle helical-bevel (RHB)

- Available output configurations:
  - foot-mounted, left-side solid-shaft
  - flange-mounted, hollow-bore
- High-strength, cast-iron housing
- 98.5 percent efficiency per gear stage
- Dimensionally interchangeable with NORD, SEW-EURODRIVE, and other major competitors



### Safety is in our DNA

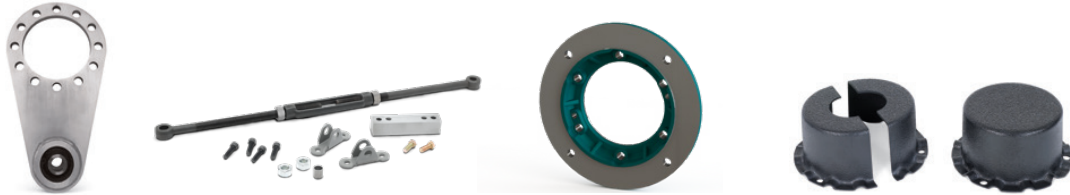
Our end covers are designed to protect you from rotating equipment and block contamination. Made from durable polymer, the covers are resistant to most cleaning chemicals like those used in food processing operations. The covers fit RHB reducers in either foot-mounted or flange-mounted configurations.



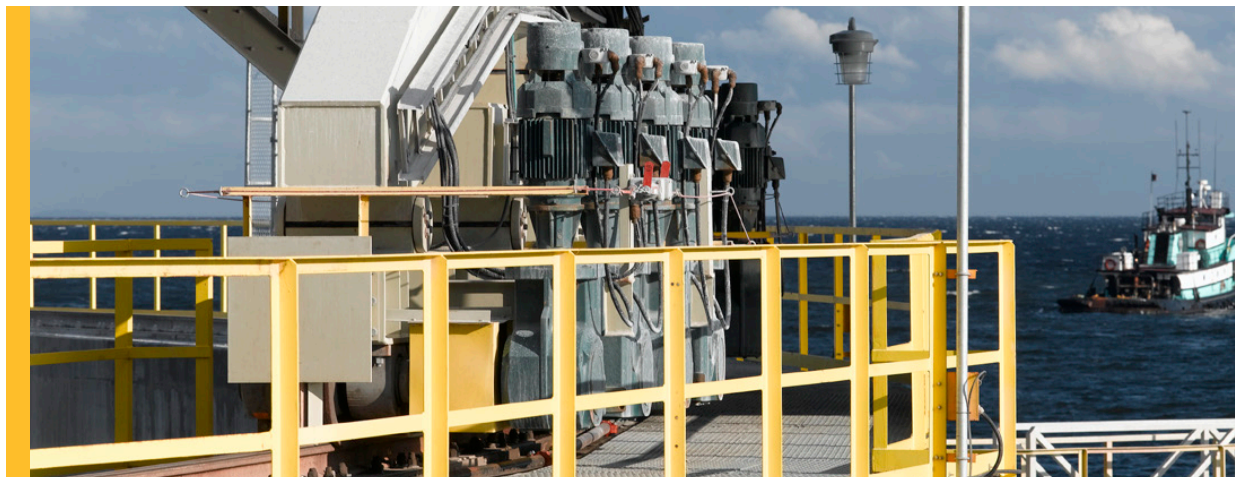
## Mounting positions and lubrication

Stock Quantis reducers are filled for the A1 mounting position with Mobilgear™ 600 XP 220 oil for long-lasting performance. To meet specific application needs, the reducer's mounting position can be changed in the field, requiring additional lubrication to be added for proper gearbox operation. For additional information on the amount of lubrication required and breather positions, refer to the Quantis instruction manual.

## RHB flange-mounted accessories



RHB reducer size	Banjo Torque-arm kit	Tie rod kit	Output flange (B5)		End covers	
	Part number	Part number	Size	Part number	Open cover kit	Closed cover kit
38	096720	094371	160 mm	085787	095143	095144
48	096721	094201	200 mm	085820	095145	095146
58	084544	094202	250 mm	085838	095147	095148
68	096722	094202	250 mm	085838	095147	095148
88	096723	094372	300 mm	085856	095146	095150
108	096724	094373	350 mm	085874	095151	095152
128	096725	094374	450 mm	085892	-	-
148	096726	094375	450 mm	085916	-	-
168	096727	094376	550 mm	085943	-	-





**CAUTION**  
KEEP HANDS  
& FEET  
CLEAR OF PRESS

ALPINE

63

64

## Nomenclature

Nomenclature string = HB382CN140TC / 4.77-A1-S-I-1.000

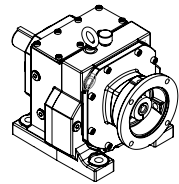
Stock part number = H3C14S00477

Configuration	Size	Input type	C-face frame	Output type	Ratio
<b>H</b>	<b>3</b>	<b>C</b>	<b>56</b>	<b>S</b>	<b>00477</b>
H = ILH foot-mounted	3 = 38	C = NEMA clamp-collar	56 = 56C	S = Solid-shaft	000.00
B = RHB foot-mounted	4 = 48		14 = 140TC	H = Straight hollow-bore	4:1—300:1
BF = RHB flange-mounted	5 = 58		18 = 180TC		
	6 = 68		21 = 210TC		
	8 = 86		25 = 250TC		
	10 = 108		28 = 280TC		
	12 = 128		32 = 320TC		
	14 = 148		36 = 360TC		
	16 = 168				

## Product specifications

Stock ILH foot-mounted, clamp-collar, C-face reducers

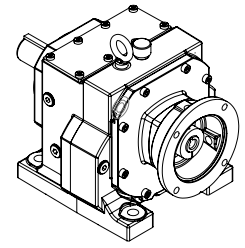
**Solid output shaft**



### Part numbers

Nominal ratio	Size	Exact ratio	Part number	Output shaft diameter	Output RPM	Output torque (in-lb)	Output OHL (lbf)	Maximum mechanical input (hp)								
								56C	140TC	180TC	210TC	250TC	280TC	320TC	360TC	
4:1	38	4.77	H3C14S00477	1.000	367	860	518	-	5.01	-	-	-	-	-	-	-
	38	4.77	H3C18S00477	1.000	367	1236	518	-	-	7.19	-	-	-	-	-	-
	48	4.28	H4C18S00428	1.250	409	1598	896	-	-	10.37	-	-	-	-	-	-
	68	3.49	H6C21S00349	1.625	501	3349	1498	-	-	-	26.64	-	-	-	-	-
	68	3.49	H6C25S00349	1.625	501	3349	1498	-	-	-	26.64	-	-	-	-	-
	88	4.87	H8C21S00487	2.125	359	5292	2656	-	-	-	30.17	-	-	-	-	-
	88	4.87	H8C25S00487	2.125	359	7972	2656	-	-	-	45.45	-	-	-	-	-
	128	3.63	H12C25S00363	2.875	482	5938	4055	-	-	-	45.42	-	-	-	-	-
	128	4.83	H12C28S00483	2.875	362	16092	4392	-	-	-	-	92.51	-	-	-	-
	128	4.83	H12C32S00483	2.875	362	21975	4392	-	-	-	-	-	126.33	-	-	-
148	4.92	H14C36S00492	3.625	356	25647	5381	-	-	-	-	-	-	-	-	144.74	
5:1	38	5.55	H3C56S00555	1.000	315	404	518	2.02	-	-	-	-	-	-	-	-
	38	6.16	H3C18S00616	1.000	284	1410	518	-	-	6.36	-	-	-	-	-	-
	38	6.71	H3C56S00671	1.000	261	488	518	2.02	-	-	-	-	-	-	-	-
	48	5.15	H4C18S00515	1.250	340	1920	904	-	-	10.35	-	-	-	-	-	-
	48	6.06	H4C18S00606	1.250	289	2260	904	-	-	10.36	-	-	-	-	-	-
	68	5.06	H6C21S00506	1.625	346	4241	1466	-	-	-	23.27	-	-	-	-	-
	68	5.93	H6C21S00593	1.625	295	4337	1466	-	-	-	20.31	-	-	-	-	-
	68	6.72	H6C21S00672	1.625	260	5973	1466	-	-	-	24.68	-	-	-	-	-
	88	5.94	H8C25S00594	2.125	295	9723	2656	-	-	-	45.45	-	-	-	-	-
	88	6.96	H8C25S00696	2.125	251	11152	2656	-	-	-	-	-	-	-	-	-
7.5:1	68	8.11	H6C18S00811	1.625	216	3024	1057	-	-	10.35	-	-	-	-	-	-
	68	8.11	H6C21S00811	1.625	216	6565	1057	-	-	-	22.48	-	-	-	-	-
	128	7.88	H12C32S00788	2.875	222	35906	4886	-	-	-	-	-	-	-	126.52	-

Refer to page 8 for ILH drawing/dimensions



Part numbers (continued)

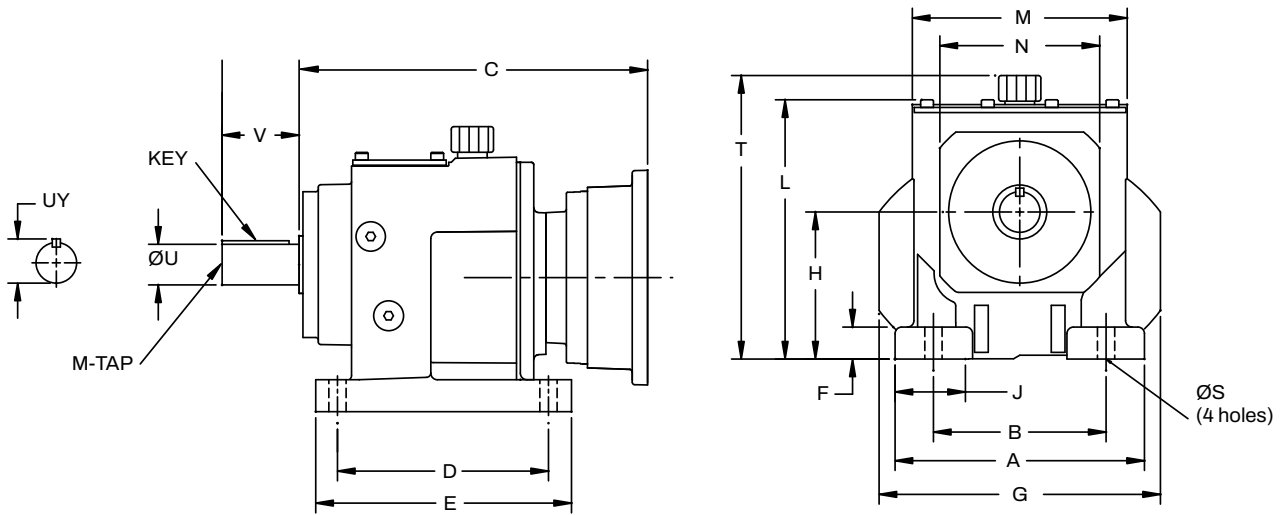
Nominal ratio	Size	Exact ratio	Part number	Output shaft diameter	Output RPM	Output torque (in-lb)	Output OHL (lbf)	Maximum mechanical input (hp)							
								56C	140TC	180TC	210TC	250TC	280TC	320TC	360TC
10:1	38	9.70	H3C14S00970	1.000	180	1698	279	-	4.86	-	-	-	-	-	-
	38	10.57	H3C14S01057	1.000	166	1747	279	-	4.59	-	-	-	-	-	-
	48	9.76	H4C18S00976	1.250	179	3090	919	-	-	8.79	-	-	-	-	-
	48	10.93	H4C18S01093	1.250	160	3208	919	-	-	8.15	-	-	-	-	-
	68	9.73	H6C21S00973	1.625	180	7067	1057	-	-	-	20.17	-	-	-	-
	88	9.26	H8C25S00926	2.125	189	12464	2252	-	-	-	-	37.37	-	-	-
	88	10.85	H8C25S01085	2.125	161	13095	2252	-	-	-	-	33.51	-	-	-
	108	9.62	H10C28S00962	2.375	182	27438	3705	-	-	-	-	-	79.20	-	-
	128	10.78	H12C32S01078	2.875	162	40744	4886	-	-	-	-	-	-	104.95	-
12:1	48	13.38	H4C18S01338	1.250	131	3427	937	-	-	7.11	-	-	-	-	-
	68	11.40	H6C21S01140	1.625	154	7081	962	-	-	-	17.25	-	-	-	-
	68	13.59	H6C21S01359	1.625	129	7081	962	-	-	-	14.47	-	-	-	-
	88	12.75	H8C21S01275	2.125	137	11734	2954	-	-	-	25.55	-	-	-	-
15:1	38	14.18	H3C56S01418	1.000	123	1031	416	2.02	-	-	-	-	-	-	-
	38	14.18	H3C14S01418	1.000	123	1925	416	-	3.77	-	-	-	-	-	-
	38	15.64	H3C56S01564	1.000	112	1116	416	1.98	-	-	-	-	-	-	-
	48	14.68	H4C18S01468	1.250	119	3532	937	-	-	6.68	-	-	-	-	-
	88	14.63	H8C21S01463	2.125	120	12691	2954	-	-	-	24.09	-	-	-	-
	88	14.63	H8C25S01463	2.125	120	14540	2954	-	-	-	-	27.60	-	-	-
	128	14.06	H12C32S01406	2.875	124	43087	5306	-	-	-	-	-	-	85.09	-
	128	16.12	H12C32S01612	2.875	109	44197	5306	-	-	-	-	-	-	76.13	-
128	16.12	H12C36S01612	2.875	109	44197	5306	-	-	-	-	-	-	-	76.13	-
18:1	38	17.33	H3C14S01733	1.000	101	1947	416	-	3.12	-	-	-	-	-	-
	68	17.82	H6C18S01782	1.625	98	6136	1306	-	-	9.56	-	-	-	-	-
	88	17.27	H8C21S01727	2.125	101	13865	2954	-	-	-	22.29	-	-	-	-
	108	17.19	H10C25S01719	2.375	102	25015	4037	-	-	-	-	40.41	-	-	-
	148	17.09	H14C36S01709	3.625	102	60555	6751	-	-	-	-	-	-	-	98.39
20:1	38	19.64	H3C56S01964	1.000	89	1183	546	1.67	-	-	-	-	-	-	-
	38	19.64	H3C14S01964	1.000	89	1947	546	-	2.75	-	-	-	-	-	-
	38	21.67	H3C56S02167	1.000	81	1210	546	1.55	-	-	-	-	-	-	-
	48	20.95	H4C18S02095	1.250	84	3954	1142	-	-	5.24	-	-	-	-	-
	68	20.20	H6C18S02020	1.625	87	6524	1306	-	-	8.97	-	-	-	-	-
	88	20.81	H8C18S02081	2.125	84	7764	3437	-	-	10.36	-	-	-	-	-
	88	20.81	H8C21S02081	2.125	84	14870	3437	-	-	-	19.84	-	-	-	-
	108	19.48	H10C25S01948	2.375	90	26711	4288	-	-	-	-	38.07	-	-	-
	108	22.86	H10C25S02286	2.375	77	27438	4288	-	-	-	-	33.33	-	-	-
	128	21.41	H12C28S02141	2.875	82	45140	5578	-	-	-	-	-	58.54	-	-
	128	21.41	H12C32S02141	2.875	82	45140	5578	-	-	-	-	-	-	58.54	-
148	20.21	H14C32S02021	3.625	87	64938	7372	-	-	-	-	-	-	-	89.22	-
25:1	38	24.50	H3C56S02450	1.000	71	1241	546	1.41	-	-	-	-	-	-	-
	38	24.50	H3C14S02450	1.000	71	1947	546	-	2.21	-	-	-	-	-	-
	48	26.53	H4C14S02653	1.250	66	3749	1142	-	3.92	-	-	-	-	-	-
	68	25.55	H6C18S02555	1.625	68	7081	1306	-	-	7.70	-	-	-	-	-
	88	25.01	H8C21S02501	2.125	70	14870	3437	-	-	-	16.51	-	-	-	-
	108	24.94	H10C25S02494	2.375	70	27438	4288	-	-	-	-	30.55	-	-	-
	148	26.49	H14C32S02649	3.625	66	69804	7372	-	-	-	-	-	-	73.17	-

Refer to page 8 for ILH drawing/dimensions

Part numbers (continued)

Ratio	Size	Exact ratio	Part number	Output shaft diameter	Output RPM	Output torque (in-lb)	Output OHL (lbf)	Maximum mechanical input (hp)							
								56C	140TC	180TC	210TC	250TC	280TC	320TC	360TC
30:1	38	31.80	H3C56S03180	1.000	55	1299	881	1.13	-	-	-	-	-	-	-
	48	28.74	H4C14S02874	1.250	61	3905	1517	-	3.77	-	-	-	-	-	-
	48	31.77	H4C14S03177	1.250	55	3983	1517	-	3.48	-	-	-	-	-	-
	68	28.25	H6C18S02825	1.625	62	7081	1940	-	-	6.96	-	-	-	-	-
	68	30.60	H6C18S03060	1.625	57	7081	1940	-	-	6.43	-	-	-	-	-
	68	34.49	H6C18S03449	1.625	51	7081	1940	-	-	5.70	-	-	-	-	-
	88	28.93	H8C21S02893	2.125	60	14870	4471	-	-	-	14.27	-	-	-	-
	88	31.32	H8C18S03132	2.125	56	9526	4471	-	-	8.45	-	-	-	-	-
	108	29.35	H10C21S02935	2.375	60	27110	5138	-	-	-	25.65	-	-	-	-
	108	32.81	H10C21S03281	2.375	53	27437	5138	-	-	-	23.22	-	-	-	-
	148	30.28	H14C32S03028	3.625	58	70808	7911	-	-	-	-	-	-	64.93	-
40:1	48	37.06	H4C14S03706	1.250	47	3983	1517	-	2.98	-	-	-	-	-	-
	48	41.26	H4C14S04126	1.250	42	3983	1517	-	2.68	-	-	-	-	-	-
	48	41.38	H4C56S04138	1.250	42	3009	1517	2.02	-	-	-	-	-	-	-
	68	37.76	H6C18S03776	1.625	46	7081	1940	-	-	5.21	-	-	-	-	-
	68	42.06	H6C18S04206	1.625	42	7081	1940	-	-	4.67	-	-	-	-	-
	88	41.90	H8C18S04190	2.125	42	9964	4471	-	-	6.60	-	-	-	-	-
	168	40.99	H16C32S04099	4.000	43	123914	17770	-	-	-	-	-	-	83.94	-
50:1	48	50.00	H4C14S05000	1.250	35	3983	1884	-	2.21	-	-	-	-	-	-
	48	55.92	H4C56S05592	1.250	31	3983	1884	1.98	-	-	-	-	-	-	-
	88	49.42	H8C18S04942	2.125	35	14870	4856	-	-	8.35	-	-	-	-	-
	88	50.73	H8C18S05073	2.125	34	10198	4856	-	-	5.58	-	-	-	-	-
	108	51.97	H10C21S05197	2.375	34	27438	6261	-	-	-	14.66	-	-	-	-
60:1	38	58.30	H3C56S05830	1.000	30	1947	1117	0.93	-	-	-	-	-	-	-
	88	57.93	H8C18S05793	2.125	30	14870	4856	-	-	7.13	-	-	-	-	-
	88	69.05	H8C18S06905	2.125	25	14870	4856	-	-	5.98	-	-	-	-	-
	108	60.90	H10C18S06090	2.375	29	22716	6261	-	-	10.36	-	-	-	-	-
	128	57.56	H12C21S05756	2.875	30	45140	7974	-	-	-	21.78	-	-	-	-
	128	66.43	H12C21S06643	2.875	26	45140	7974	-	-	-	18.87	-	-	-	-
	148	69.36	H14C21S06936	3.625	25	70808	11827	-	-	-	28.35	-	-	-	-
75:1	148	69.36	H14C25S06936	3.625	25	70808	11827	-	-	-	-	28.35	-	-	-
	88	74.88	H8C18S07488	2.125	23	14870	4856	-	-	5.51	-	-	-	-	-
	108	71.59	H10C18S07159	2.375	24	26703	7343	-	-	10.36	-	-	-	-	-
	108	82.14	H10C18S08214	2.375	21	27438	7343	-	-	9.28	-	-	-	-	-
	128	78.06	H12C21S07806	2.875	22	45140	8992	-	-	-	16.06	-	-	-	-
100:1	108	105.08	H10C18S10508	2.375	17	27438	7343	-	-	7.25	-	-	-	-	-
	128	88.46	H12C21S08846	2.875	20	45140	8992	-	-	-	14.17	-	-	-	-
	128	103.80	H12C21S10380	2.875	17	45140	8992	-	-	-	12.08	-	-	-	-
	148	92.91	H14C21S09291	3.625	19	70808	11827	-	-	-	21.16	-	-	-	-
	148	92.91	H14C25S09291	3.625	19	70808	11827	-	-	-	-	21.16	-	-	-
	148	107.42	H14C21S10742	3.625	16	70808	12725	-	-	-	18.30	-	-	-	-
	168	94.30	H16C25S09430	4.000	19	123914	17770	-	-	-	-	36.49	-	-	-
150:1	168	94.30	H16C28S09430	4.000	19	123914	17770	-	-	-	-	-	36.49	-	-
	88	129.79	H8C18S12979	2.125	13	14870	4856	-	-	3.18	-	-	-	-	-
	128	123.53	H12C21S12353	2.875	14	45140	8992	-	-	-	10.15	-	-	-	-
200:1	148	144.39	H14C18S14439	3.625	12	53859	12725	-	-	10.36	-	-	-	-	-
	168	210.49	H16C21S21049	4.000	8	123914	17770	-	-	-	16.35	-	-	-	-
300:1	148	301.34	H14C18S30134	3.625	6	70808	12725	-	-	6.52	-	-	-	-	-
	148	336.11	H14C18S33611	3.625	5	70808	12725	-	-	5.85	-	-	-	-	-

Refer to page 8 for ILH drawing/dimensions



### Dimensions

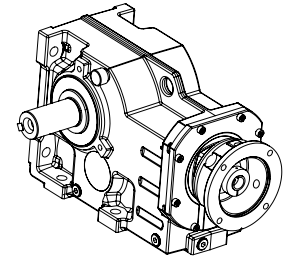
Size	Frame size	A	B	C	D	E	F	G	H	J	L	M	N	T	ØS
HB38	56C			9.57											
	140TC	5.77	4.33	10.24	5.12	6.30	0.79	6.42	3.54	1.33	6.21	5.07	3.77	N/A	0.39
	180TC			9.98											
HB48	56C			10.73											
	140TC	7.68	5.32	11.40	6.50	7.87	0.98	8.66	4.53	2.17	7.98	6.61	4.92	8.73	0.53
	180TC			12.97											
HB68	56C			11.97											
	140TC	9.25	6.69	12.64	8.07	9.65	1.18	10.35	5.51	2.36	9.65	8.41	6.32	10.58	0.69
	180TC			14.21											
	210TC			15.33											
250TC	17.95														
HB88	56C			13.88											
	140TC	11.42	8.47	14.55	10.24	12.21	1.77	13.07	7.09	2.95	12.21	10.24	7.87	13.17	0.69
	180TC			16.06											
	210TC			17.95											
250TC	21.55														
HB108	250TC	13.39	9.84	18.12	12.21	14.37	1.97	16.14	8.86	3.58	15.32	12.05	9.85	16.20	0.87
	280TC			18.86											
	320TC			21.55											
	360TC			21.41											
	400TC			21.41											
HB128	250TC	15.75	11.42	20.87	14.57	17.32	2.17	18.19	9.84	4.33	17.13	14.33	11.82	18.08	1.02
	380TC			20.87											
	420TC			22.44											
	460TC			24.21											
	500TC			22.86											
HB148	250TC	17.72	13.39	22.62	16.14	19.29	2.36	20.07	12.40	4.34	19.71	16.38	11.82	20.55	1.30
	280TC			23.54											
	320TC			25.13											
	360TC			25.36											
	400TC			22.86											
HB168	250TC	20.87	14.96	25.45	19.69	23.23	2.56	22.84	13.98	5.71	23.07	18.11	15.75	23.92	1.54
	280TC			26.36											
	320TC			27.95											
	360TC			29.68											
	400TC			22.86											

Size	ØU	UY	V	KEY	M-TAP
HB38	1.000	1.11	1.97	1/4 x 1/4 x 1-5/8	3/8-16 UNC x 0.87
HB48	1.250	1.36	2.36	1/4 x 1/4 x 2	3/8-16 UNC x 0.87
HB68	1.625	1.79	3.15	3/8 x 3/8 x 2-5/8	5/8-11 UNC x 1.42
HB88	2.125	2.35	3.94	1/2 x 1/2 x 3-1/4	3/4-10 UNC x 1.65
HB108	2.375	2.65	4.72	5/8 x 5/8 x 3-15/16	3/4-10 UNC x 1.65
HB128	2.875	3.20	5.51	3/4 x 3/4 x 4-1/2	3/4-10 UNC x 1.65
HB148	3.625	4.01	6.69	7/8 x 7/8 x 5-5/8	1-8 UNC x 1.97
HB168	4.000	4.44	8.27	1 x 1 x 7-1/8	1-8 UNC x 1.97

# Product specifications

Stock RHB foot-mounted, clamp-collar, C-face reducers

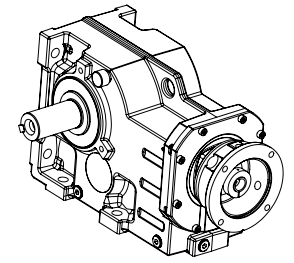
## Solid output shaft



### Part numbers

Ratio	Size	Exact ratio	Part number	Output shaft diameter	Output RPM	Output torque (in-lb)	Output OHL (lbf)	Maximum mechanical input (hp)							
								56C	140TC	180TC	210TC	250TC	280TC	320TC	360TC
5	48	7.22	B4C18S00722	1.250	242	2573	1032	-	-	9.90	-	-	-	-	
	68	5.36	B6C18S00536	1.625	326	2001	2503	-	-	10.36	-	-	-	-	
	88	5.54	B8C21S00554	2.000	316	5377	4505	-	-	-	26.94	-	-	-	
	88	6.69	B8C21S00669	2.000	262	6116	4505	-	-	-	25.39	-	-	-	
	148	4.83	B14C25S00483	3.625	362	7915	9207	-	-	-	-	45.49	-	-	
	148	4.83	B14C32S00483	3.625	362	23688	9207	-	-	-	-	-	136.15	-	
	148	6.43	B14C25S00643	3.625	272	10531	9207	-	-	-	-	45.49	-	-	
	148	6.43	B14C32S00643	3.625	272	29288	9207	-	-	-	-	-	-	126.51	
10	88	9.41	B8C18S00941	2.000	186	3511	4512	-	-	10.36	-	-	-	-	
	88	9.41	B8C21S00941	2.000	186	7526	4512	-	-	-	22.21	-	-	-	
	88	11.64	B8C21S01164	2.000	150	11290	4512	-	-	-	26.93	-	-	-	
	88	14.04	B8C21S01404	2.000	125	12592	4512	-	-	-	24.90	-	-	-	
	108	7.68	B10C25S00768	2.375	228	12540	5586	-	-	-	-	45.36	-	-	
	108	13.74	B10C25S01374	2.375	127	21134	5586	-	-	-	-	42.72	-	-	
20	38	17.99	B3C14S01799	1.000	97	2213	726	-	3.41	-	-	-	-	-	
	38	19.78	B3C56S01978	1.000	89	1438	726	2.02	-	-	-	-	-	-	
	48	20.54	B4C18S02054	1.250	85	3985	1149	-	-	5.39	-	-	-	-	
	48	24.85	B4C14S02485	1.250	70	3717	1149	-	4.15	-	-	-	-	-	
	68	18.93	B6C18S01893	1.625	92	6770	2503	-	-	9.93	-	-	-	-	
	68	21.22	B6C18S02122	1.625	82	7005	2503	-	-	9.17	-	-	-	-	
	88	16.85	B8C21S01685	2.000	104	13299	4512	-	-	-	21.91	-	-	-	
	88	19.75	B8C21S01975	2.000	89	13947	4512	-	-	-	19.60	-	-	-	
	108	19.63	B10C25S01963	2.375	90	23527	5586	-	-	-	-	33.74	-	-	
	148	19.84	B14C32S01984	3.625	88	66834	11951	-	-	-	-	-	-	93.52	
30	38	31.59	B3C56S03159	1.000	55	2213	926	1.94	-	-	-	-	-	-	
	48	28.90	B4C14S02890	1.250	61	3985	1226	-	3.83	-	-	-	-	-	
	48	33.60	B4C14S03360	1.250	52	3985	1226	-	3.29	-	-	-	-	-	
	68	25.42	B6C18S02542	1.625	69	7262	2503	-	-	7.93	-	-	-	-	
	68	27.99	B6C18S02799	1.625	63	7262	2503	-	-	7.20	-	-	-	-	
	68	30.38	B6C18S03038	1.625	58	7262	2503	-	-	6.64	-	-	-	-	
	88	25.53	B8C21S02553	2.000	69	14612	4512	-	-	-	15.89	-	-	-	
	88	28.50	B8C21S02850	2.000	61	14612	4512	-	-	-	14.24	-	-	-	
	88	30.87	B8C18S03087	2.000	57	10635	4512	-	-	9.57	-	-	-	-	
	88	30.87	B8C21S03087	2.000	57	14612	4512	-	-	-	13.14	-	-	-	
88	34.40	B8C21S03440	2.000	51	14612	4512	-	-	-	11.80	-	-	-		
40	38	39.73	B3C56S03973	1.000	44	2213	926	1.55	-	-	-	-	-	-	
	48	37.28	B4C14S03728	1.250	47	3985	1226	-	2.97	-	-	-	-	-	
	48	40.60	B4C14S04060	1.250	43	3985	1226	-	2.73	-	-	-	-	-	
	68	39.39	B6C14S03939	1.625	44	7101	2503	-	5.01	-	-	-	-	-	
	68	39.39	B6C18S03939	1.625	44	7262	2503	-	-	5.12	-	-	-	-	
	88	41.50	B8C18S04150	2.000	42	14612	4512	-	-	9.78	-	-	-	-	
50	38	49.38	B3C56S04938	1.000	35	2213	1150	1.24	-	-	-	-	-	-	
	48	45.41	B4C14S04541	1.250	39	3985	1591	-	2.44	-	-	-	-	-	
	48	49.65	B4C56S04965	1.250	35	3612	1591	2.02	-	-	-	-	-	-	
	48	49.65	B4C14S04965	1.250	35	3985	1591	-	2.23	-	-	-	-	-	
	68	51.96	B6C18S05196	1.625	34	7262	2503	-	-	3.88	-	-	-	-	
	88	49.80	B8C18S04980	2.000	35	14612	4512	-	-	8.15	-	-	-	-	

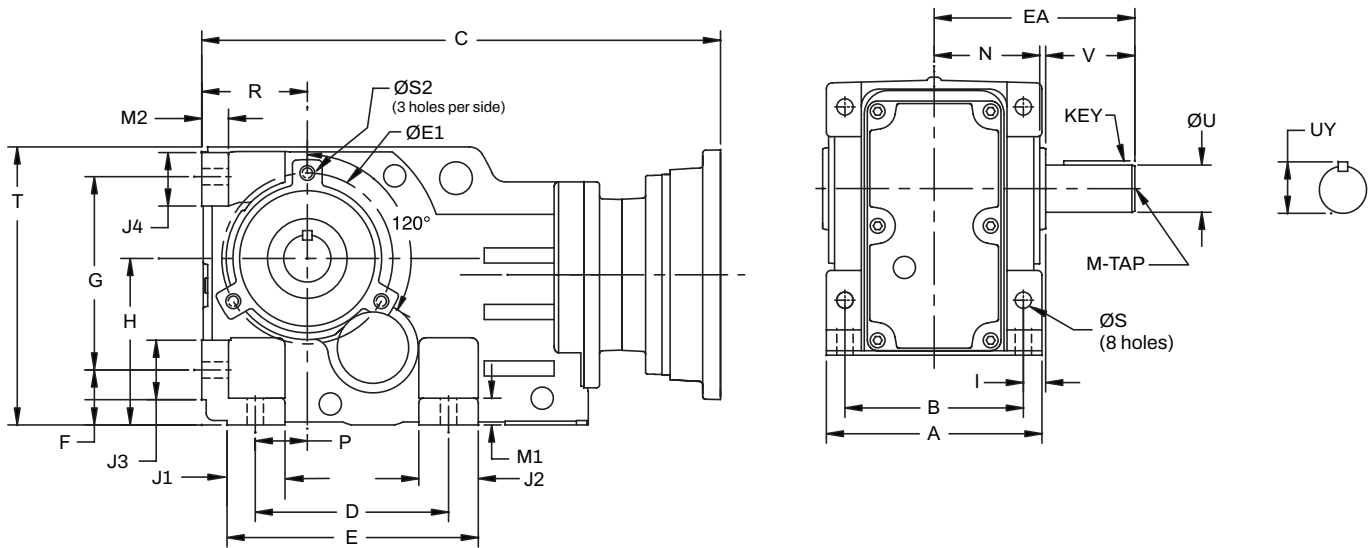
Refer to page 11 for RHB drawing/dimensions



Part numbers (continued)

Ratio	Size	Exact ratio	Part number	Output shaft diameter	Output RPM	Output torque (in-lb)	Output OHL (lbf)	Maximum mechanical input (hp)						
								56C	140TC	180TC	210TC	250TC	280TC	320TC
60	38	60.33	B3C56S06033	1.000	29	2213	1150	1.02	-	-	-	-	-	-
	48	60.08	B4C56S06008	1.250	29	3985	1591	1.84	-	-	-	-	-	-
	68	58.23	B6C14S05823	1.625	30	7262	2503	-	3.46	-	-	-	-	-
	88	58.37	B8C18S05837	2.000	30	14612	4512	-	-	6.95	-	-	-	-
	88	69.57	B8C18S06957	2.000	25	14612	4512	-	-	5.83	-	-	-	-
	88	75.45	B8C18S07545	2.000	23	14612	4512	-	-	5.38	-	-	-	-
	108	61.22	B10C21S06122	2.375	29	26568	5586	-	-	-	12.05	-	-	-
	108	70.24	B10C18S07024	2.375	25	26213	5586	-	-	10.36	-	-	-	-
	128	63.41	B12C25S06341	2.875	28	41623	6907	-	-	-	-	18.23	-	-
85	48	83.25	B4C56S08325	1.250	21	3985	1878	1.33	-	-	-	-	-	-
	48	94.12	B4C56S09412	1.250	19	3985	1878	1.18	-	-	-	-	-	-
	68	83.40	B6C14S08340	1.625	21	7262	2503	-	2.42	-	-	-	-	-
	68	90.89	B6C14S09089	1.625	19	7262	2503	-	2.22	-	-	-	-	-
	88	91.22	B8C18S09122	2.000	19	14612	4512	-	-	4.45	-	-	-	-
	108	82.90	B10C18S08290	2.375	21	26568	5586	-	-	8.90	-	-	-	-
	128	85.98	B12C21S08598	2.875	20	41623	6907	-	-	-	13.44	-	-	-
100	38	97.05	B3C56S09705	1.000	18	2213	1411	0.63	-	-	-	-	-	-
	38	110.75	B3C56S11075	1.000	16	2213	1411	0.55	-	-	-	-	-	-
	48	107.47	B4C56S10747	1.250	16	3985	1878	1.03	-	-	-	-	-	-
	48	122.19	B4C56S12219	1.250	14	3985	1878	0.91	-	-	-	-	-	-
	68	99.55	B6C56S09955	1.625	18	7046	2503	1.97	-	-	-	-	-	-
	68	99.55	B6C14S09955	1.625	18	7262	2503	-	2.03	-	-	-	-	-
	108	99.90	B10C18S09990	2.375	18	26568	5586	-	-	7.38	-	-	-	-
	128	97.44	B12C21S09744	2.875	18	41623	6907	-	-	-	11.86	-	-	-
128	124.74	B12C21S12474	2.875	14	41623	6907	-	-	-	9.27	-	-	-	
150	38	139.43	B3C56S13943	1.000	13	2213	1411	0.44	-	-	-	-	-	-
	48	150.76	B4C56S15076	1.250	12	3985	1878	0.73	-	-	-	-	-	-
	48	169.53	B4C56S16953	1.250	10	3985	1878	0.65	-	-	-	-	-	-
	68	150.98	B6C56S15098	1.625	12	7262	2503	1.34	-	-	-	-	-	-
	88	156.63	B8C14S15663	2.000	11	14612	4512	-	2.59	-	-	-	-	-
	128	136.07	B12C18S13607	2.875	13	41623	6907	-	-	8.49	-	-	-	-
	128	146.84	B12C21S14684	2.875	12	41623	6907	-	-	-	7.87	-	-	-
	128	175.80	B12C18S17580	2.875	10	41623	6907	-	-	6.57	-	-	-	-
200	38	179.13	B3C56S17913	1.000	10	2213	1411	0.34	-	-	-	-	-	-
	68	176.14	B6C56S17614	1.625	10	7262	2503	-	1.14	-	-	-	-	-
	68	196.07	B6C56S19607	1.625	9	7262	2503	1.03	-	-	-	-	-	-
	68	243.72	B6C56S24372	1.625	7	7262	2503	0.83	-	-	-	-	-	-
	88	193.24	B8C56S19324	2.000	9	10992	4512	1.58	-	-	-	-	-	-
	88	193.24	B8C14S19324	2.000	9	14612	4512	-	2.10	-	-	-	-	-
	88	246.13	B8C14S24613	2.000	7	14612	4512	-	1.65	-	-	-	-	-
148	191.02	B14C21S19102	3.625	9	70848	13027	-	-	-	10.30	-	-	-	
300	88	302.68	B8C56S30268	2.000	6	11638	4512	1.07	-	-	-	-	-	-
	108	278.10	B10C14S27810	2.375	6	26568	5586	-	2.65	-	-	-	-	-
	108	307.24	B10C14S30724	2.375	6	26568	5586	-	2.40	-	-	-	-	-
	128	270.90	B12C18S27090	2.875	6	41623	6907	-	-	4.27	-	-	-	-
	148	251.55	B14C18S25155	3.625	7	64739	13027	-	-	7.13	-	-	-	-
148	306.08	B14C18S30608	3.625	6	66221	13027	-	-	6.01	-	-	-	-	

Refer to page 11 for RHB drawing/dimensions



### Dimensions

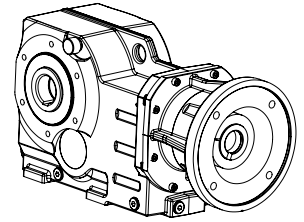
Size	Frame size	A	B	C	D	F	G	H	I	J1	J2	J3	J4	M1	M2	N	P	R	T	ØE1	ØS	ØS2
	56C			12.44																		
BB38	140TC	4.72	3.94	13.11	4.33	1.26	4.53	3.94	0.39	1.38	1.26	1.30	1.22	0.63	0.63	2.28	1.10	2.48	6.58	3.94	0.43	M8 x 0.55
	180TC			13.43																		
	56C			13.62																		
BB48	140TC	5.71	4.72	14.29	5.12	1.45	5.12	4.41	0.59	1.54	1.58	1.58	1.42	0.71	0.71	2.80	1.38	2.80	7.36	4.53	0.43	M10 x 0.66
	180TC			14.61																		
	56C			15.50																		
BB68	140TC	6.69	5.51	16.17	4.72	1.77	6.30	5.54	0.79	1.97	1.97	1.97	1.89	0.87	0.87	3.39	1.18	3.54	9.09	5.12	0.53	M12 x 0.82
	180TC			17.75																		
	56C			17.80																		
BB88	140TC	7.87	6.50	18.46	5.91	2.17	7.87	7.09	0.89	2.17	2.17	2.17	2.56	0.98	0.98	3.94	1.58	4.41	11.61	6.50	0.71	M12 x 0.82
	180TC			19.96																		
	210TC			21.85																		
	140TC			21.28																		
BB108	180TC	9.06	7.09	22.64	7.09	2.76	9.17	8.35	1.18	2.76	3.15	2.76	2.91	1.18	1.18	4.53	2.17	5.20	13.58	8.47	0.87	M16 x 1.10
	210TC			24.53																		
	250TC			24.47																		
	180TC			24.86																		
BB128	210TC	11.42	9.45	26.76	9.45	2.95	11.61	10.43	1.18	3.15	3.15	3.15	3.54	1.38	1.38	5.71	2.95	6.30	16.65	10.43	1.02	M16 x 1.10
	250TC			26.74																		
	180TC			28.07																		
	210TC			29.92																		
BB148	250TC	13.39	10.63	29.66	11.02	3.74	14.17	12.40	1.58	3.54	4.17	3.54	3.50	1.58	1.58	6.65	3.74	7.87	19.80	12.40	1.30	M20 x 1.33
	280TC			30.58																		
	320TC			32.17																		

Size	EA	ØU	UY	V	KEY	M-TAP
BB38	4.33	1.000	1.11	1.97	1/4 x 1/4 x 1-5/8	3/8-16 UNC x 0.87
BB48	5.31	1.250	1.37	2.36	1/4 x 1/4 x 1-7/8	3/8-16 UNC x 0.87
BB68	6.69	1.625	1.80	3.15	3/8 x 3/8 x 2-5/8	5/8-11 UNC x 1.42
BB88	8.07	2.000	2.22	3.94	1/2 x 1/2 x 3-1/4	3/4-10 UNC x 1.65
BB108	9.45	2.375	2.65	4.72	5/8 x 5/8 x 3-11/16	3/4-10 UNC x 1.65
BB128	11.42	2.875	3.21	5.51	3/4 x 3/4 x 4	3/4-10 UNC x 1.65
BB148	13.58	3.625	4.01	6.69	7/8 x 7/8 x 5-1/4	1-8 UNC x 1.97

# Product specifications

Stock RHB flange-mounted, clamp-collar, C-face reducers

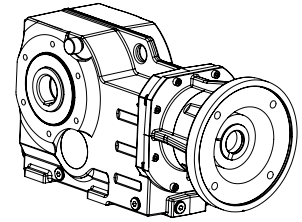
**Straight hollow bore**



## Part numbers

Ratio	Size	Exact ratio	Part number	Output shaft diameter	Output RPM	Output torque (in-lb)	Output OHL (lbf)	Maximum mechanical input (hp)							
								56C	140TC	180TC	210TC	250TC	280TC	320TC	360TC
5	38	5.65	BF3C18H00565	1.250	310	1140	589	-	-	5.60	-	-	-	-	-
	38	6.22	BF3C14H00622	1.250	281	1120	589	-	5.00	-	-	-	-	-	-
	38	7.22	BF3C14H00722	1.250	242	1237	620	-	4.76	-	-	-	-	-	-
10	38	12.65	BF3C14H01265	1.250	138	2213	617	-	4.86	-	-	-	-	-	-
	48	8.40	BF4C18H00840	1.375	208	2573	1032	-	-	8.51	-	-	-	-	-
	48	9.32	BF4C18H00932	1.375	188	2573	1032	-	-	7.67	-	-	-	-	-
	48	11.95	BF4C18H01195	1.375	146	3747	1110	-	-	8.70	-	-	-	-	-
	68	10.40	BF6C18H01040	1.500	168	3880	2503	-	-	10.36	-	-	-	-	-
	108	7.68	BF10C25H00768	2.375	228	12540	5586	-	-	-	-	45.36	-	-	-
15	38	14.69	BF3C14H01469	1.250	119	2213	617	-	4.18	-	-	-	-	-	-
	38	14.69	BF3C18H01469	1.250	119	2213	617	-	-	4.18	-	-	-	-	-
	38	15.91	BF3C14H01591	1.250	110	2213	617	-	3.86	-	-	-	-	-	-
	48	16.79	BF4C18H01679	1.375	104	3985	1110	-	-	6.59	-	-	-	-	-
	68	14.35	BF6C18H01435	1.500	122	5355	2503	-	-	10.36	-	-	-	-	-
	68	16.89	BF6C18H01689	1.500	104	6305	2503	-	-	10.36	-	-	-	-	-
	88	14.04	BF8C21H01404	2.000	125	12592	4512	-	-	-	24.90	-	-	-	-
	88	16.85	BF8C21H01685	2.000	104	13299	4512	-	-	-	21.91	-	-	-	-
108	16.75	BF10C25H01675	2.375	104	22429	5586	-	-	-	-	37.17	-	-	-	
20	38	17.99	BF3C56H01799	1.250	97	1308	726	2.02	-	-	-	-	-	-	-
	38	17.99	BF3C14H01799	1.250	97	2213	726	-	3.41	-	-	-	-	-	-
	38	19.78	BF3C14H01978	1.250	89	2213	726	-	3.11	-	-	-	-	-	-
	68	18.93	BF6C18H01893	1.500	92	6770	2503	-	-	9.93	-	-	-	-	-
	68	23.16	BF6C18H02316	1.500	76	7192	2503	-	-	8.62	-	-	-	-	-
	88	19.75	BF8C21H01975	2.000	89	13947	4512	-	-	-	19.60	-	-	-	-
	88	23.54	BF8C21H02354	2.000	74	14612	4512	-	-	-	17.23	-	-	-	-
25	38	24.16	BF3C56H02416	1.250	72	1648	726	1.89	-	-	-	-	-	-	-
	38	24.16	BF3C14H02416	1.250	72	2213	726	-	2.54	-	-	-	-	-	-
	48	24.85	BF4C14H02485	1.375	70	3717	1149	-	4.15	-	-	-	-	-	-
	48	24.85	BF4C18H02485	1.375	70	3985	1149	-	-	4.45	-	-	-	-	-
	68	25.42	BF6C18H02542	1.500	69	7262	2503	-	-	7.93	-	-	-	-	-
	88	25.53	BF8C18H02553	2.000	69	9530	4512	-	-	10.36	-	-	-	-	-
	88	25.53	BF8C21H02553	2.000	69	14612	4512	-	-	-	15.89	-	-	-	-
	108	26.48	BF10C25H02648	2.375	66	24813	5586	-	-	-	-	26.02	-	-	-
	148	26.58	BF14C32H02658	3.625	66	68393	11951	-	-	-	-	-	-	71.44	-

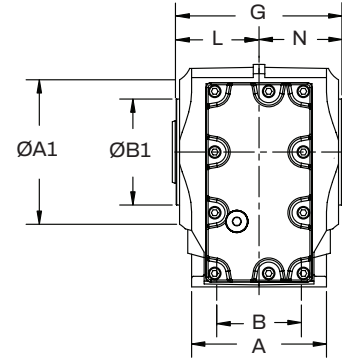
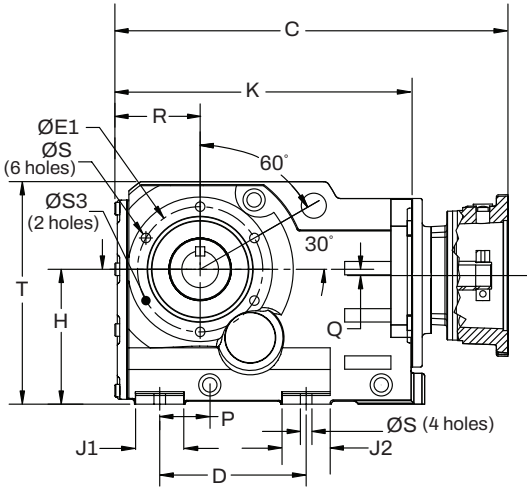
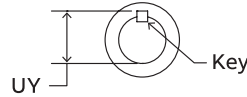
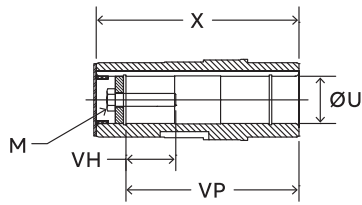
Refer to page 14 for RHB drawing/dimensions.



Part numbers (continued)

Ratio	Size	Exact ratio	Part number	Output shaft diameter	Output RPM	Output torque (in-lb)	Output OHL (lbf)	Maximum mechanical input (hp)							
								56C	140TC	180TC	210TC	250TC	280TC	320TC	360TC
30	38	28.72	BF3C56H02872	1.250	61	2088	926	2.02	-	-	-	-	-	-	
	38	31.59	BF3C56H03159	1.250	55	2213	926	1.94	-	-	-	-	-	-	
	48	28.90	BF4C14H02890	1.375	61	3985	1226	-	3.83	-	-	-	-	-	
	68	27.99	BF6C18H02799	1.500	63	7262	2503	-	-	7.20	-	-	-	-	
	68	30.38	BF6C18H03038	1.500	58	7262	2503	-	-	6.64	-	-	-	-	
	68	32.78	BF6C18H03278	1.500	53	7027	2503	-	-	5.95	-	-	-	-	
	88	30.87	BF8C18H03087	2.000	57	10635	4512	-	-	9.57	-	-	-	-	
	88	34.40	BF8C21H03440	2.000	51	14612	4512	-	-	-	11.80	-	-	-	
	108	31.25	BF10C25H03125	2.375	56	25105	5586	-	-	-	-	22.31	-	-	
40	38	39.73	BF3C56H03973	1.250	44	2213	926	1.55	-	-	-	-	-	-	
	48	40.60	BF4C14H04060	1.375	43	3985	1226	-	2.73	-	-	-	-	-	
	68	39.39	BF6C14H03939	1.500	44	7101	2503	-	5.01	-	-	-	-	-	
	68	39.39	BF6C18H03939	1.500	44	7262	2503	-	-	5.12	-	-	-	-	
	88	41.50	BF8C18H04150	2.000	42	14612	4512	-	-	9.78	-	-	-	-	
	88	41.50	BF8C21H04150	2.000	42	14612	4512	-	-	-	9.78	-	-	-	
	108	36.44	BF10C21H03644	2.375	48	25251	5586	-	-	-	19.24	-	-	-	
	108	44.44	BF10C21H04444	2.375	39	26568	5586	-	-	-	16.60	-	-	-	
	128	35.92	BF12C25H03592	2.750	49	41623	6907	-	-	-	-	32.17	-	-	
50	48	49.65	BF4C14H04965	1.375	35	3985	1591	-	2.23	-	-	-	-	-	
	48	54.49	BF4C14H05449	1.375	32	3985	1591	-	2.03	-	-	-	-	-	
	68	46.37	BF6C18H04637	1.500	38	7262	2503	-	-	4.35	-	-	-	-	
	68	51.96	BF6C14H05196	1.500	34	7262	2503	-	3.88	-	-	-	-	-	
	68	51.96	BF6C18H05196	1.500	34	7262	2503	-	-	3.88	-	-	-	-	
	88	49.80	BF8C18H04980	2.000	35	14612	4512	-	-	8.15	-	-	-	-	
	108	52.08	BF10C18H05208	2.375	34	19436	5586	-	-	10.36	-	-	-	-	
	128	53.36	BF12C25H05336	2.750	33	41623	6907	-	-	-	-	21.66	-	-	
	60	48	66.60	BF4C14H06660	1.375	26	3985	1591	-	1.66	-	-	-	-	-
68		58.23	BF6C18H05823	1.500	30	7262	2503	-	-	3.46	-	-	-	-	
88		58.37	BF8C18H05837	2.000	30	14612	4512	-	-	6.95	-	-	-	-	
80	68	76.84	BF6C14H07684	1.500	23	7262	2503	-	2.62	-	-	-	-	-	
	88	75.45	BF8C18H07545	2.000	23	14612	4512	-	-	5.38	-	-	-	-	
	88	84.21	BF8C18H08421	2.000	21	14612	4512	-	-	4.82	-	-	-	-	
	108	82.90	BF10C18H08290	2.375	21	26568	5586	-	-	8.90	-	-	-	-	
	128	85.98	BF12C21H08598	2.750	20	41623	6907	-	-	-	-	13.44	-	-	
100	68	99.55	BF6C14H09955	1.500	18	7262	2503	-	2.03	-	-	-	-	-	
	88	103.38	BF8C18H10338	2.000	17	14612	4512	-	-	3.92	-	-	-	-	
250	68	243.72	BF6C56H24372	1.500	7	7262	2503	0.83	-	-	-	-	-	-	

Refer to page 14 for RHB drawing/dimensions.



### Dimensions

Size	Frame size	A	B	C	D	G	H	J1	J2	K	L	N	P	Q	R	T	ØA1	ØB1	ØE1	ØS	ØS2
	56C			12.71																	
BF38	140TC	3.94	2.36	13.38	4.61	4.49	3.94	1.26	1.26	9.21	2.36	2.24	1.38	0.37	2.76	6.58	4.72	3.15	3.94	M10 x 0.67	M8 x 0.55
	180TC			13.70																	
	56C			13.87																	
BF48	140TC	4.33	2.76	14.54	5.51	5.59	4.41	1.18	1.18	10.37	2.80	2.68	1.58	0.43	3.05	7.36	5.20	3.74	4.53	M10 x 0.67	M10 x 0.66
	180TC			14.86																	
	56C			15.44																	
BF68	140TC	5.51	3.46	16.11	5.98	6.77	5.51	1.97	1.97	12.15	3.39	3.25	1.65	0.26	3.48	9.09	5.91	4.33	5.12	M12 x 0.83	M12 x 0.82
	180TC			17.69																	
	56C			17.72																	
BF88	140TC			18.38																	
	180TC	6.69	4.53	19.88	6.69	7.87	7.09	2.17	2.17	14.64	3.80	3.94	1.89	0.79	4.33	11.61	7.48	5.12	6.50	M16 x 1.10	M12 x 0.82
	210TC			21.77																	
	180TC			22.77																	
BF108	210TC	8.27	6.57	24.66	8.86	9.06	8.35	2.76	2.76	18.24	4.53	4.37	2.56	0.51	5.33	13.58	9.65	7.09	8.47	M16 x 1.10	M16 x 1.10
	250TC			24.60																	
	210TC			26.62																	
BF128	250TC	10.04	8.39	26.60	9.76	11.42	10.43	3.15	3.15	20.77	5.71	5.55	3.27	0.79	6.16	16.65	11.61	9.06	10.43	M20 x 1.33	M16 x 1.10
				26.60																	
BF148	320TC	11.26	8.27	31.99	11.42	13.31	12.40	3.54	3.54	24.31	6.65	6.46	3.94	1.46	7.71	19.80	13.19	9.84	11.81	M24 x 1.61	M20 x 1.33

Size	ØU	UY	VH	VP	X	KEY	M-TAP
BF38	1.25	1.38	1.47	4.02	4.72	1/4 x 1/4 x 1-7/8	3/8-16 x 1-3/4 UNC
BF48	1.375	1.53	1.45	5.04	5.91	5/16 x 5/16 x 2-3/16	3/8-16 x 1-3/4 UNC
BF68	1.50	1.68	2.05	5.91	7.09	3/8 x 3/8 x 3-1/8	5/8-11 x 2-1/4 UNC
BF88	2.00	2.23	1.89	7.09	8.27	1/2 x 1/2 x 3-15/16	3/4-10 x 2-1/4 UNC
BF108	2.375	2.66	2.53	8.19	9.45	5/8 x 5/8 x 4-1/16	3/4-10 x 3 UNC
BF128	2.75	3.04	2.51	10.35	11.81	5/8 x 5/8 x 6-1/8	3/4-10 x 3 UNC
BF148	3.625	3.84	2.31	12.20	13.78	7/8 x 7/8 x 7-1/16	1-8 x 2-1/2 UNC





**Dodge Industrial, Inc.**

1061 Holland Road, Simpsonville, SC 29681

+1 864 297 4800

**[dodgeindustrial.com](http://dodgeindustrial.com)**

Dodge Industrial, Inc. reserves all rights in this document and in the subject matter and illustrations contained therein. We reserve the right to modify contents without prior notice and do not accept responsibility for potential errors or possible lack of information in this document. Dodge Industrial, Inc. Terms and Conditions apply. Any reproduction, disclosure to third parties or utilization of its contents—in whole or in parts—is forbidden without prior written consent of Dodge Industrial, Inc.

© Copyright Dodge Industrial, Inc. All rights reserved. Specifications subject to change without notice.  
An RBC Bearings company.

BR2QT02-02.24