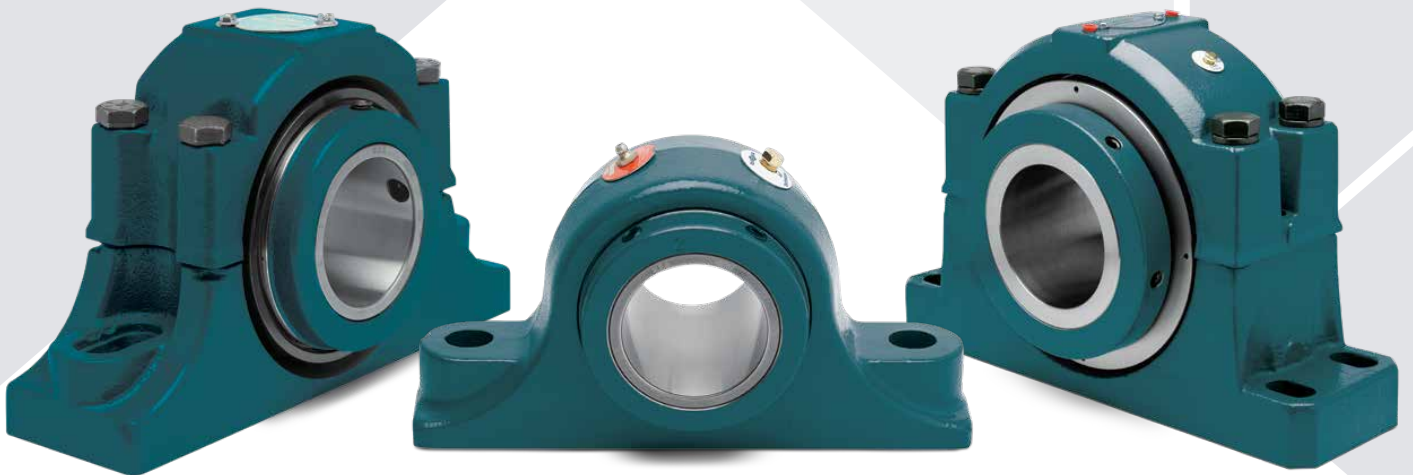


MOUNTED TAPERED ROLLER BEARINGS

Type E Family

The industry standard for performance

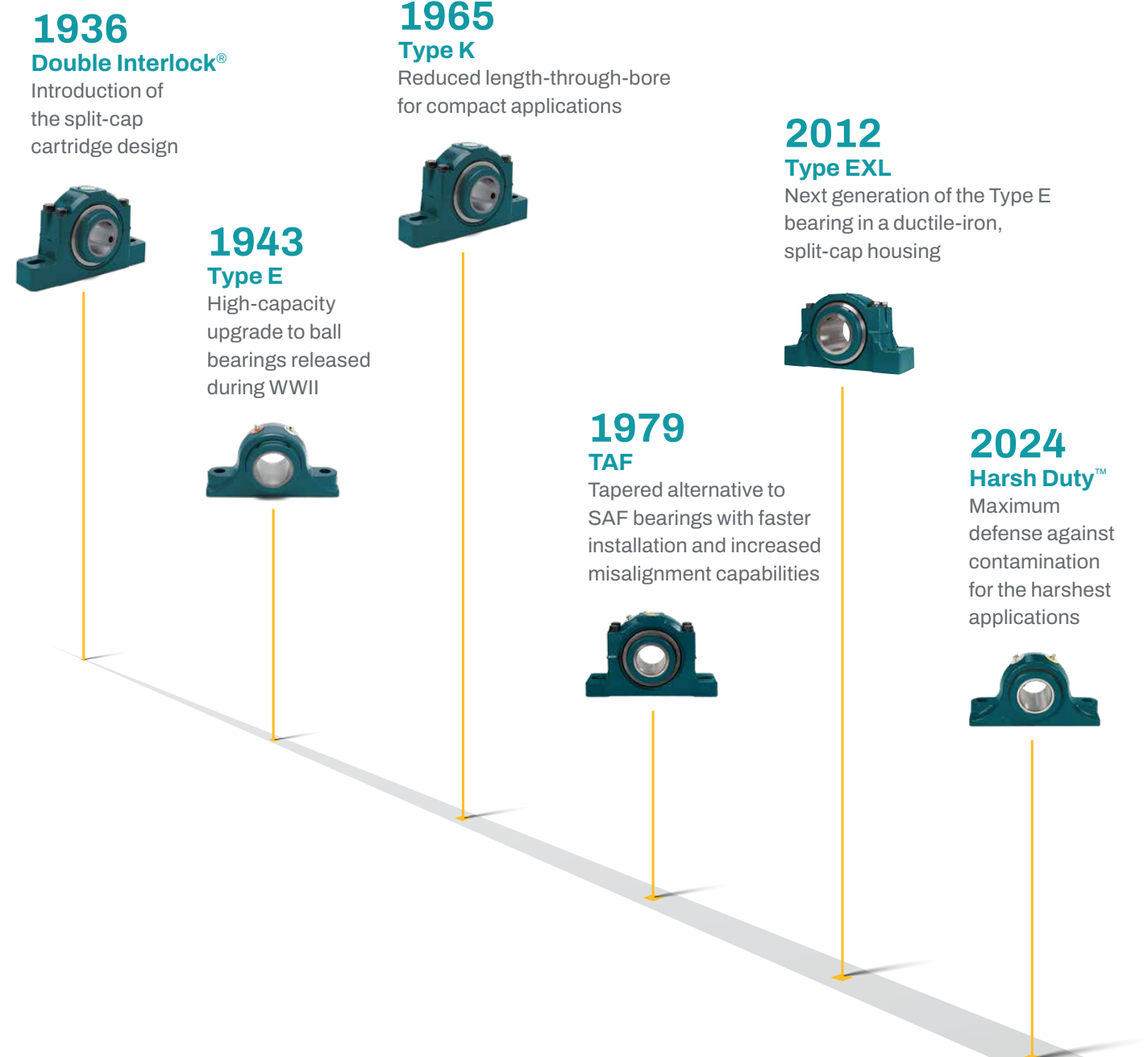


Your trusted partner

Since its founding in 1878, Dodge® has built a legacy rich in innovation and quality by setting the standard for reliability in demanding applications. From the launch of our first mounted tapered roller bearing over 100 years ago to the invention of the Type E bearing, our mechanical power transmission solutions are engineered and manufactured with the highest levels of quality for long-lasting performance to continue driving industry forward.

First to market, first in performance

Introduced in 1943, the original Type E bearing immediately made an impact—giving customers an upgraded solution capable of handling heavy loads in harsh applications. Since its launch over 80 years ago, our Type E has grown to become a family of solutions that sets the industry benchmark for mounted tapered roller bearings in quality, reliability, and longer driven equipment life.



Family feature overview

Manufactured in the USA



Industry-leading capacity ratings

High-capacity tapered roller bearings maximize contact with the raceway, optimizing reliability and outperforming the competition for the best capacity ratings on the market

Factory-filled with grease

Pre-lubricated with Dodge engineering-approved lithium-complex grease, preventing contamination during installation and reducing labor time

65-degree set screw angle

Collar utilizes a 65-degree set screw angle to maximize the holding power for both radial and axial loads

Shaft-ready out of the box

Factory-assembled to eliminate the opportunity for contamination and simplify installation—saving time and increasing reliability

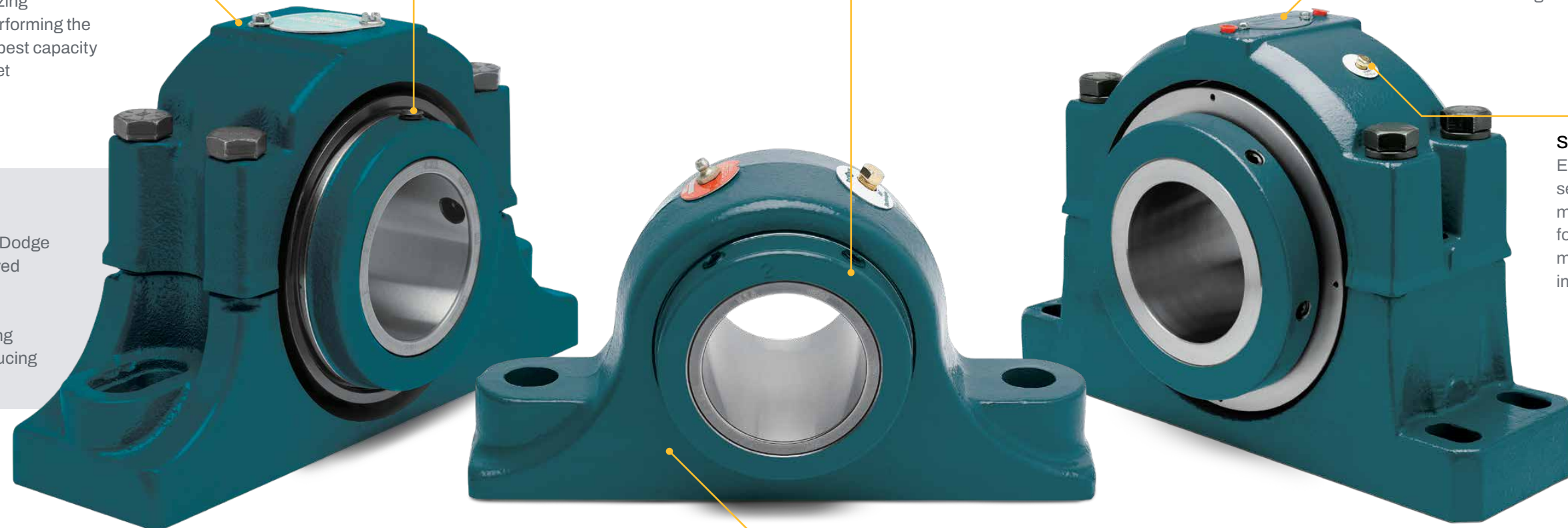
OPTIFY™ Intelli-Lube®-compatible

Seamlessly replace manual lubrication to effortlessly extend the life of your mounted bearings



Sensor-ready

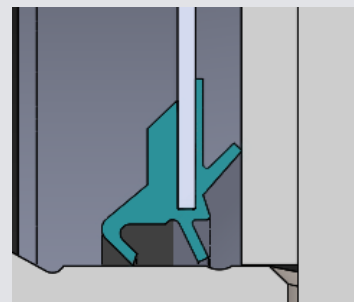
Easily install OPTIFY sensors to remotely monitor bearing health for enhanced predictive maintenance and improved on-site safety



Housing options

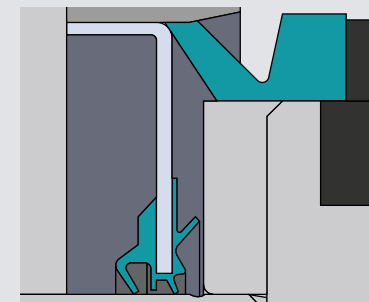
Multiple housing styles available to meet a wide range of application requirements from unitized and split-housed pillow blocks to a wide array of flange and take-up units

Superior sealing systems



XTS seal

Mechanically retained, triple-lip seal optimizes grease retention while preventing seal blowout for maximum protection from contamination and extended product life.



ArmorTect seal

The premium seal option featured in the Harsh Duty series of Type E and TAF, the ArmorTect sealing system is designed for harsh-duty applications to extend the life of your bearings and prevent downtime at your facility. Its four points of seal contact and two trash guards are designed to prevent contamination, providing you with a superior solution for optimal performance and grease retention.

Type E

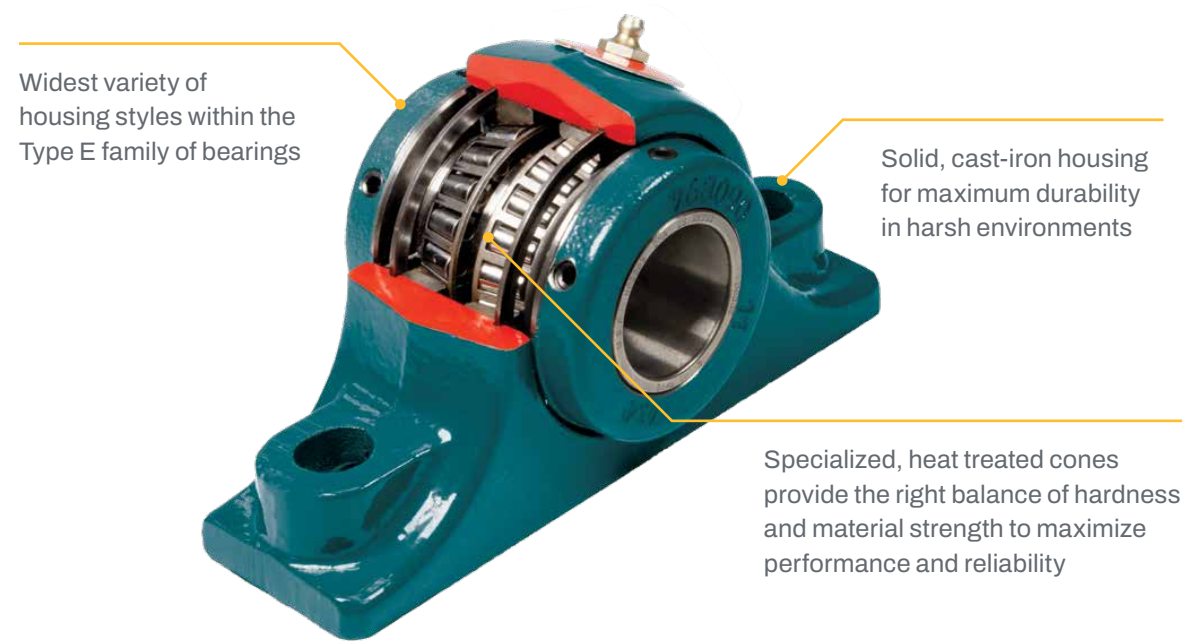
Launched in 1943, our Type E bearing was the first of its kind on the market—providing customers with an innovative, yet value-focused mounted tapered roller bearing solution—and continues to set the standard for reliable performance in demanding applications.

Housing options

- 2-bolt pillow block
- 4-bolt pillow block
- 4-bolt square flange
- Piloted flange
- Wide-slot take-ups
- Top-angle take-ups

Bore size range

1-3/16 in—7 in (35 mm—180 mm)



Type EXL

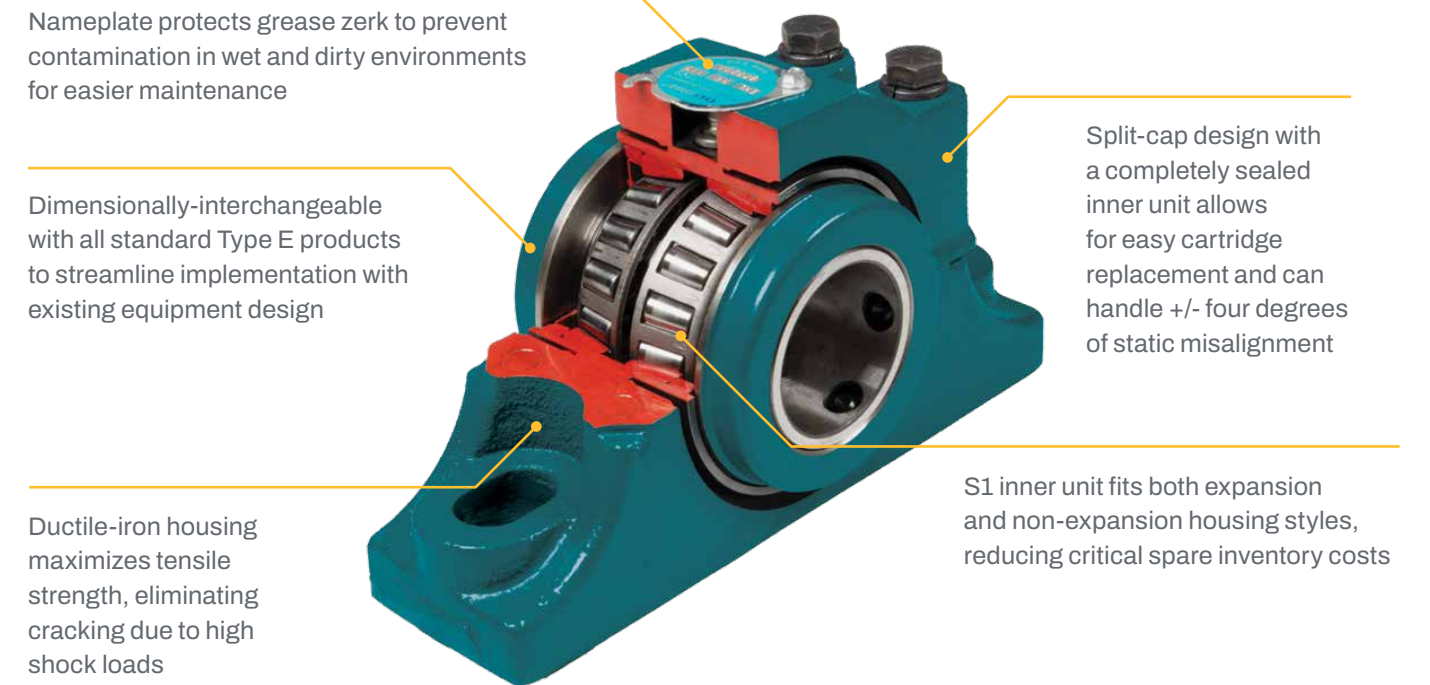
As the premier extension of the original Type E mounted bearing invented by Dodge over 80 years ago, Type EXL takes performance to the next level with enhanced features, such as the split-cap design and ductile-iron housing, designed to mitigate unforeseen downtime and reduce maintenance costs.

Housing options

- 2-bolt pillow block
- 4-bolt pillow block
- 4-bolt square flange

Bore size range

1-3/16 in—5 in (30 mm—125 mm)



Harsh Duty series Type E

The Harsh Duty series takes reliability to the next level by offering Type E with upgraded features for maximum protection in the harshest environments. Ideal for applications with heavy particulates, such as aggregate, mining, grain, and cement, Type E Harsh Duty keeps your equipment moving no matter what your operations throw at it.

- Premium ArmorTect sealing system with four points of contact and two trash guards provides maximum protection against contamination
- 100 percent filled with options of mineral-based or synthetic lithium-complex grease at the factory, adding an extra layer of protection in heavy-load applications commonly found in harsh environments
- 1-year performance guarantee from failure due to solid particle contamination when installed and maintained with OPTIFY Intelli-Lube



TAF

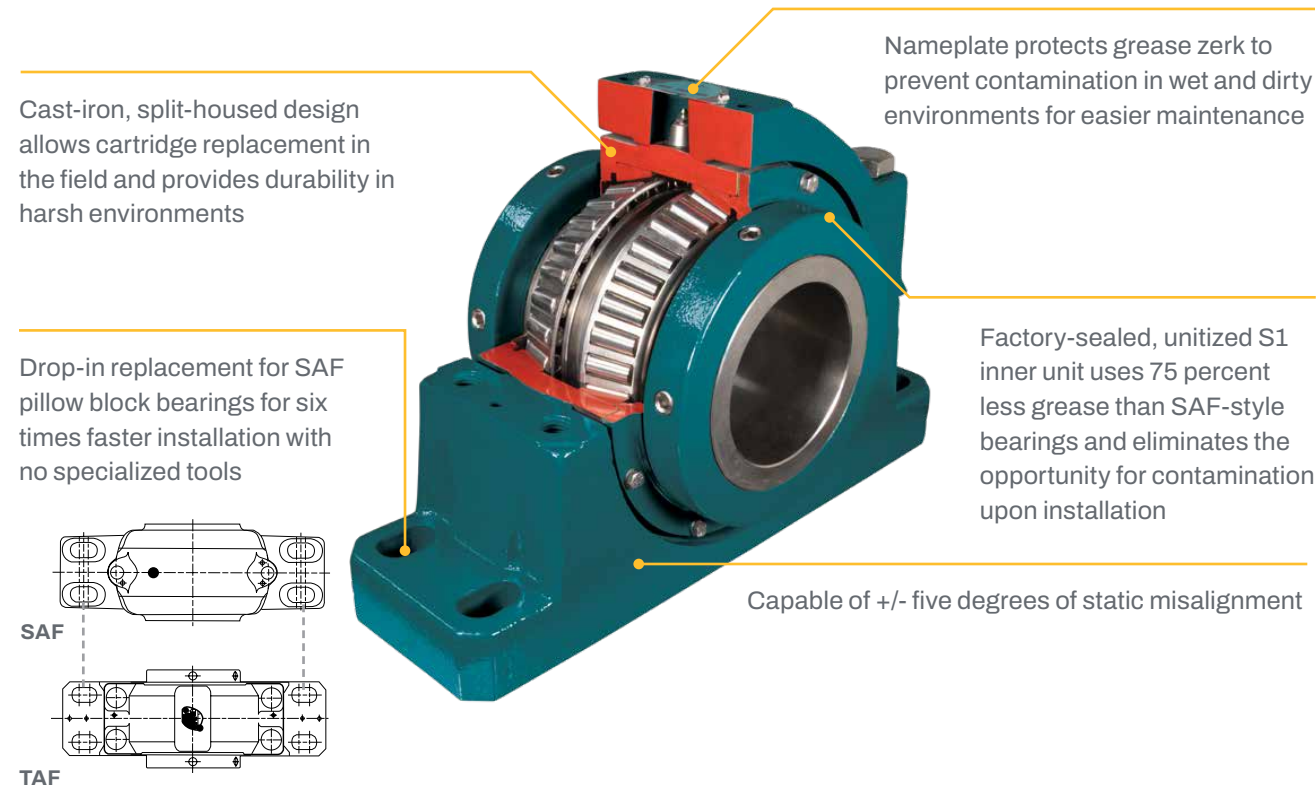
TAF is engineered to be the simpler, faster solution for your toughest applications, being dimensionally-interchangeable with SAF pillow block mounted bearings to provide extra strength and the ability to withstand demanding applications.

Housing options

- 2-bolt pillow block
- 4-bolt pillow block

Bore size range

1-7/16 in—7 in (35 mm—180 mm)



Double Interlock and Type K

Key to the Dodge legacy of mounted bearing solutions, Double Interlock and Type K feature a cast-iron, split-housed design for easy cartridge replacement in the field. The completely sealed S1 inner unit eliminates opportunity for contamination upon installation and allows for +/- five degrees of static misalignment—providing the application versatility and enhanced performance you can rely on.

Housing options

- 2-bolt pillow block
- 4-bolt pillow block
- 4-bolt square flange
- Wide-slot take-ups
- Top-angle take-ups

Bore size range

1-3/16 in—7 in (35 mm—170 mm)

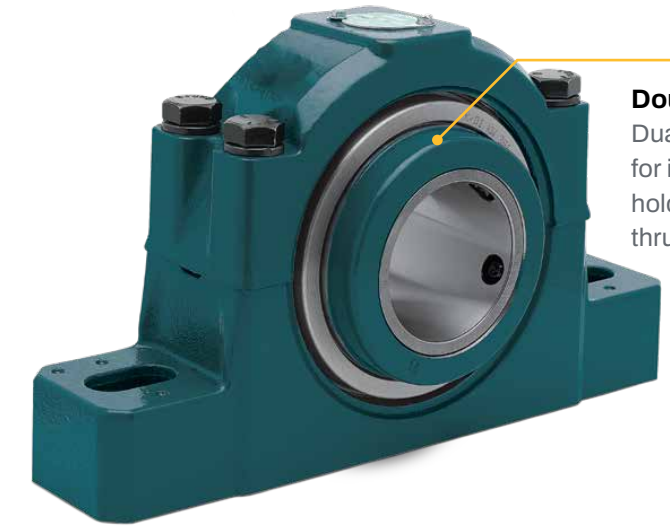
Type K

Single locking collar and reduced length-through-bore for application versatility in limited-space applications



Double Interlock

Dual locking collar for increased holding power and thrust capacity



Harsh Duty series

TAF

The Harsh Duty series provides maximum protection in the toughest, dirtiest environments with upgraded features. Designed for robust protection in highly-contaminated applications, such as aggregate, mining, grain, and cement, TAF Harsh Duty is the solution that performs in the harshest environments.

- Premium ArmorTect sealing system with four points of contact and two trash guards provides maximum protection against contamination
- 100 percent filled with options of mineral-based or synthetic lithium-complex grease at the factory, adding an extra layer of protection in heavy-load applications commonly found in harsh environments
- 1-year performance guarantee from failure due to solid particle contamination when installed and maintained with OPTIFY Intelli-Lube



Technical specifications

Type E family offering

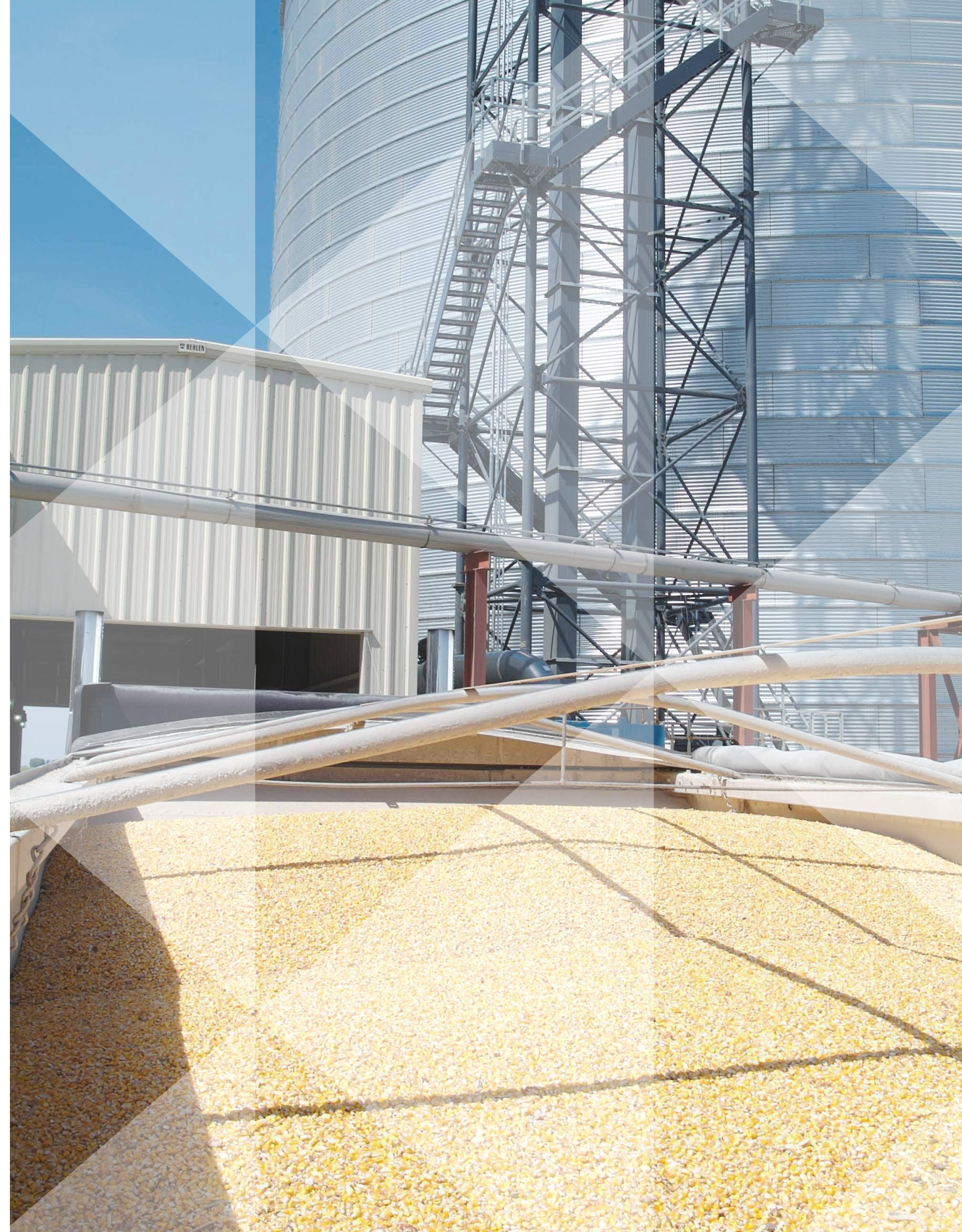
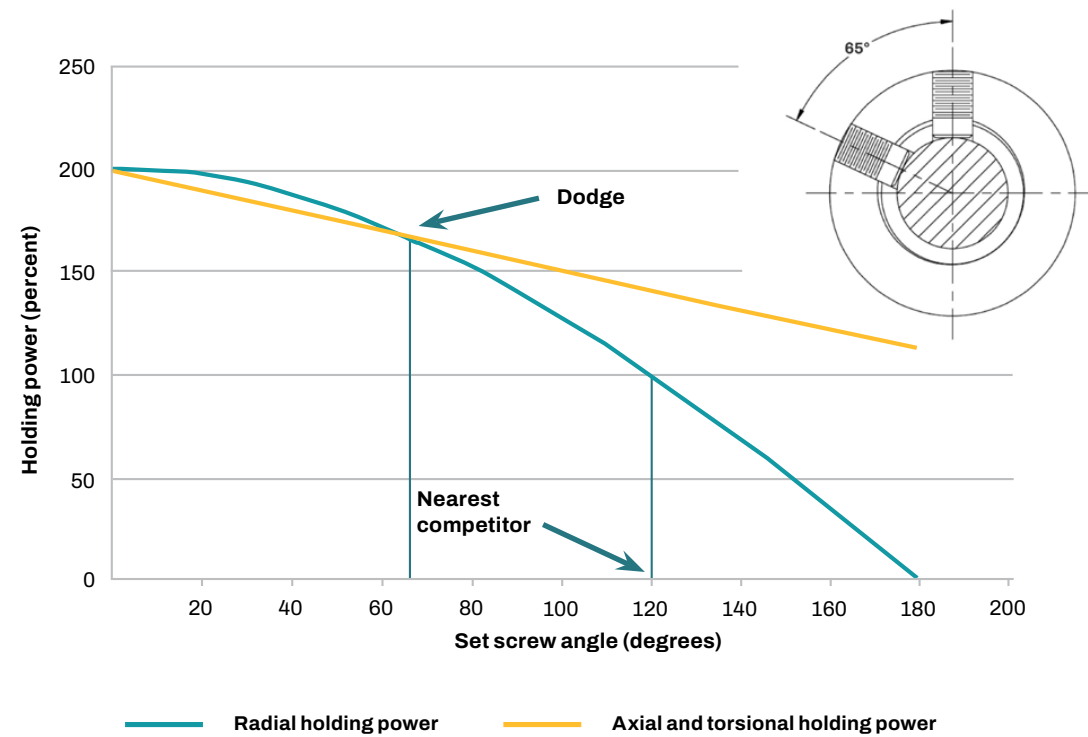
	Type E	Type EXL	TAF	Double Interlock	Type K
2-bolt pillow block	1-3/16—3-1/2	1-3/16—3-1/2	1-7/16—3-1/2	1-3/16—3-1/2	1-3/16—3-1/2
4-bolt pillow block	2-1/4—7	2-1/4—5	2-7/16—7	2-1/4—7	2-15/16—3-15/16
4-bolt square flange	1-3/16—4-1/2	1-3/16—4	—	1-3/16—4	1-3/16—3-15/16
4-bolt round flange	—	—	—	4-7/16—5	—
Piloted flange	1-3/16—5	—	—	—	—
Wide-slot take-up	1-3/8—3	—	—	—	1-3/8—3
Top-angle take-up	1-3/4—4	—	—	—	1-3/4—3-15/16
End cover option	✓	—	✓	✓	✓
Expansion	—	✓	✓	✓	✓
Non-expansion	✓	✓	✓	✓	✓

Note: All units are in inches

Set screw holding power

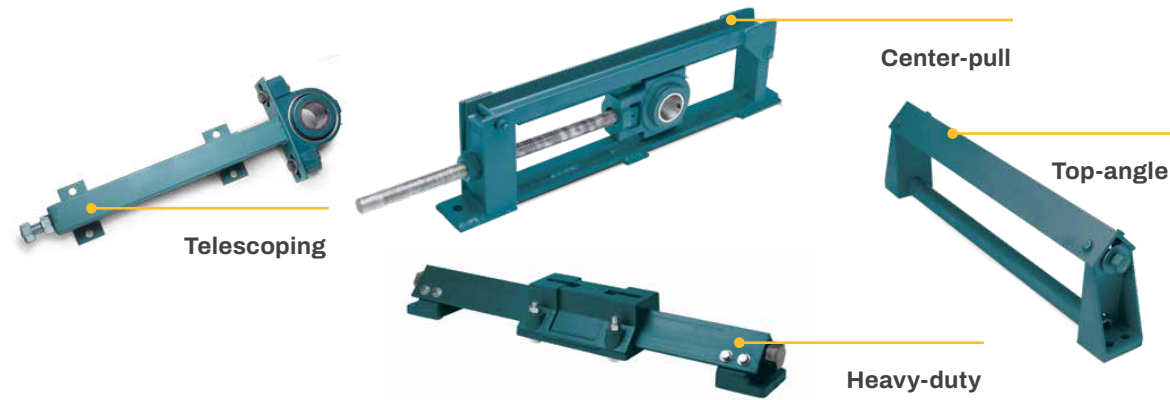
When it comes to securing a mounted bearing to the shaft, the set screw shaft attachment method provides a simple and fast installation while boasting the highest holding power compared to other common locking mechanisms.

Due to its critical function, Dodge has dedicated years and significant engineering resources to optimizing our set screw design. The 65-degree set screw angle maximizes radial, axial, and torsional holding power while minimizing stress on the collar. In combination with high-quality material and best in the world manufacturing processes, our set screw design provides superior performance compared to the competition.



Take-up frames for added support

Take-up frames provide a structure to install mounted bearings, promote belt tracking, prevent belt slippage, and maintain shaft centers for belt conveyor systems with a manual take-up design.



Take-up frame offering

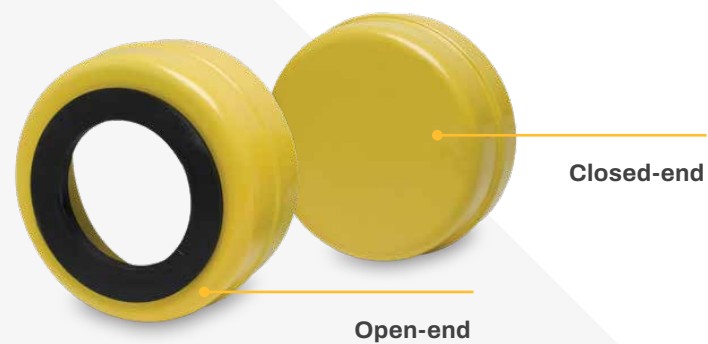
	Type E			TAF			Double Interlock			Type K		
	Bore size		Frame travel	Bore size		Frame travel	Bore size		Frame travel	Bore size		Frame travel
	Min	Max		Min	Max		Min	Max		Min	Max	
Top-angle (TP)	1-3/4	4	12—24	—	—	—	—	—	—	1-3/4	4	12—24
Center-pull (CP)	1-3/8	3	12—36	—	—	—	—	—	—	1-7/16	3	12—36
Heavy-duty (HD)	1-1/2	6	12—60	2-7/16	5-7/16	12—48	1-1/2	5	12—60	1-1/2	5	6—48
Telescoping (TS)	1-3/16	5	3—48	2-7/16	5	12—48	1-1/2	5	6—48	1-1/2	5	6—48

Note: All units are in inches

Safety, more than an accessory

The safest product is one designed to operate reliably with little to no human interaction, and our solutions are safe by design.

When extra protection is needed, easy-to-install end covers are available to keep your employees safe from rotating shafts and minimize risk of on-site injuries while accommodating OSHA and MSHA safety guidelines.



Manufactured in the USA for over 100 years

Our mounted roller bearings are manufactured at our facility in Marion, NC that adheres to ISO 9001:2015 Quality Management System and world-class quality standards to provide you with unparalleled product availability and reliability. With multiple warehouse locations across the USA, there isn't another mounted bearing manufacturer in the world that can provide you with the same level of support.



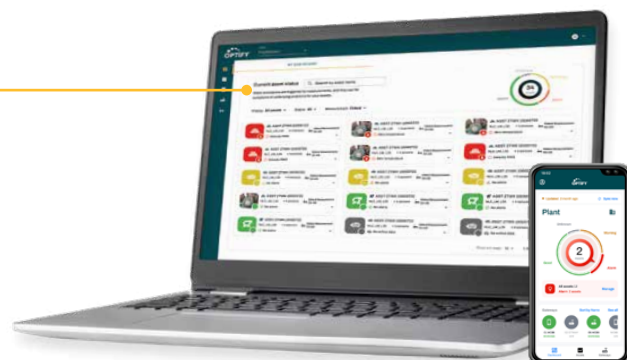


Work smarter, not harder

OPTIFY, our portfolio of Industrial Internet of Things (IIoT) solutions, allows you to easily monitor the overall health of your power transmission equipment and gain powerful insights—letting you know when maintenance is needed before it's too late.

Platform

Take the guesswork out of work with the free OPTIFY condition monitoring platform that empowers you with overall health indicators of your assets anytime, anywhere through its web portal or mobile app—providing you with a continuous flow of data for safe, hands-free gathering of measurements



Intelli-Lube

The premier automatic, connected lubricator that effortlessly extends the life of your bearings by replacing your manual lubrication process—streamlining maintenance, lowering costs, and improving safety with the right grease, volume, and interval every single time



Performance Sensor

Built on the proven success of Dodge sensors, the specialized wireless sensor remotely captures accurate measurements in your mounted bearings, gear reducers, and motors for complete powertrain condition monitoring

Scan to access OPTIFY
or visit dodgeoptify.com



The OPTIFY app is available at:



Save time and money, like magic

Backed by over 145 years of engineering excellence, PT Wizard is the easy-to-use program that provides a guided experience with built-in tools at your fingertips to ensure you can quickly find the exact solution you need.

- Product selection
- Competitive interchange
- Belt conveyor design tool
- Bearing grease calculator



Access tools today at
ptwizard.com





Dodge Industrial, Inc.

1061 Holland Road, Simpsonville, SC 29681

+1 864 297 4800

dodgeindustrial.com

Dodge Industrial, Inc. reserves all rights in this document and in the subject matter and illustrations contained therein. We reserve the right to modify contents without prior notice and do not accept responsibility for potential errors or possible lack of information in this document. Dodge Industrial, Inc. Terms and Conditions apply. Any reproduction, disclosure to third parties or utilization of its contents—in whole or in parts—is forbidden without prior written consent of Dodge Industrial, Inc.

© Copyright Dodge Industrial, Inc. All rights reserved. Specifications subject to change without notice.
An RBC Bearings company.

BR1TP01-11.25