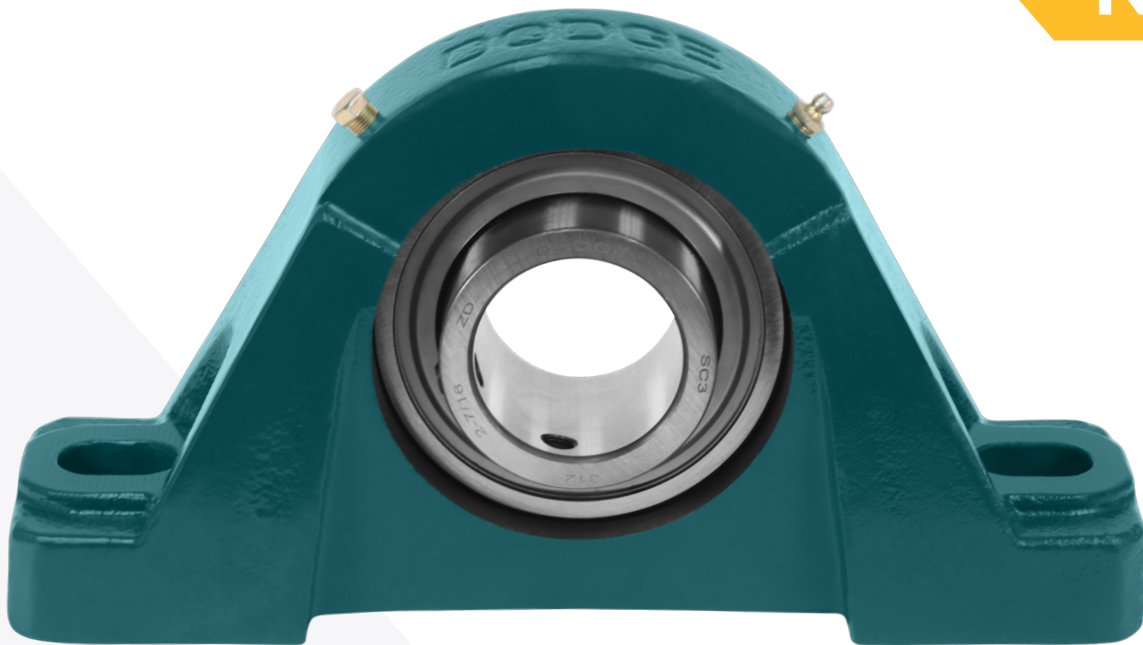


MOUNTED BALL BEARINGS

300-Series

Engineered for high-speed and heavy-load applications

New!



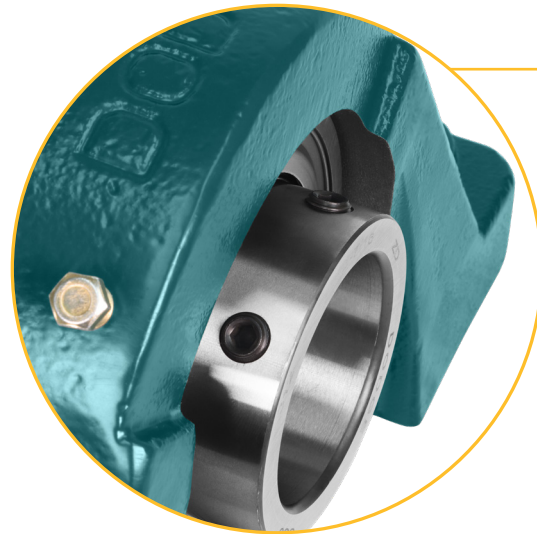
300-Series mounted ball bearings are built for applications that push beyond the limits of traditional designs with 200-series rolling elements. Large rolling elements support heavy loads, while preserving the high-speed performance that ball bearings are known for, delivering a strong balance between load capacity and speed capability.

Its features make 300-Series bearings a strong fit for air-handling, agricultural, and similar applications with moderate-to-heavy loads running at elevated speeds—especially where mounted spherical or tapered roller bearings may add unnecessary cost. Compared to mounted spherical roller bearings, the reduced surface contact of ball bearing rolling elements minimizes friction and heat, helping extend lubrication life and reduce maintenance.

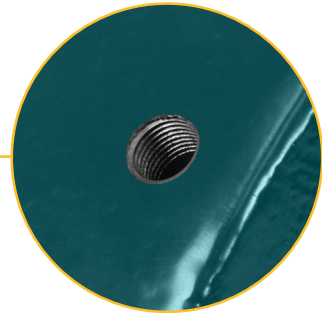
Backed by over 80 years of Dodge® mounted ball bearing manufacturing expertise, 300-Series bearings are readily available from stock for immediate delivery and provide proven performance that keeps your equipment running when uptime matters most.



Innovative features



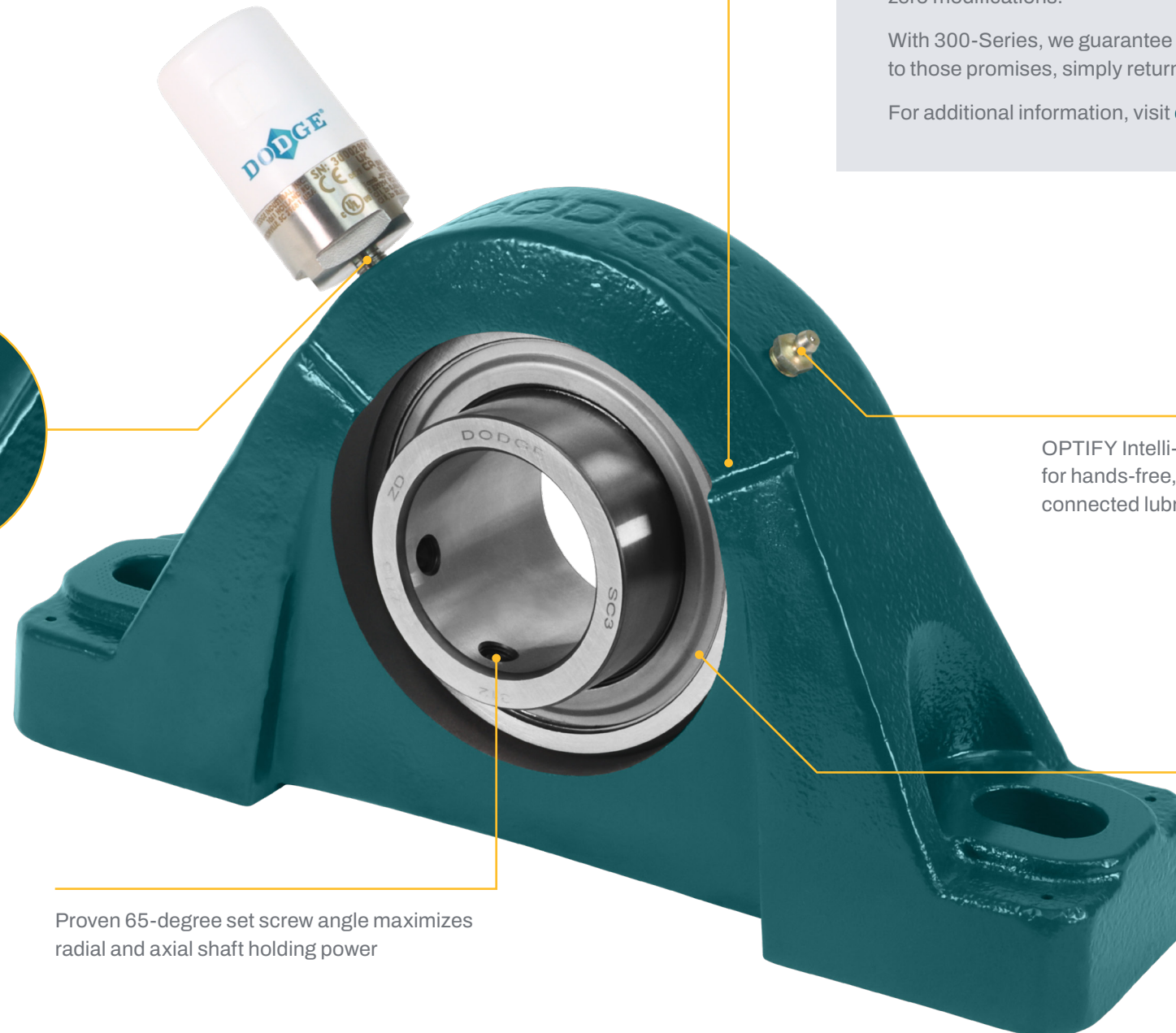
Unique recessed housing design makes set screws easily accessible, allowing for fast and easy installation



Pre-drilled and tapped housing for installation of our OPTIFY™ Performance Sensor, a connected sensor for real-time temperature and vibration monitoring



Manufactured in the USA at our ISO 9001:2015-certified facility in Rogersville, TN



Proven 65-degree set screw angle maximizes radial and axial shaft holding power

With the First-Fit Promise, you can switch with confidence

Switching brands shouldn't mean taking risks. 300-Series is engineered for interchangeability with Link-Belt® PU and Timken® Fafnir® RAO units to fit into your existing application, the first time and every time, with zero modifications.

With 300-Series, we guarantee you'll get equal or better performance. If it doesn't live up to those promises, simply return it with no restocking fee—that's the First-Fit Promise.

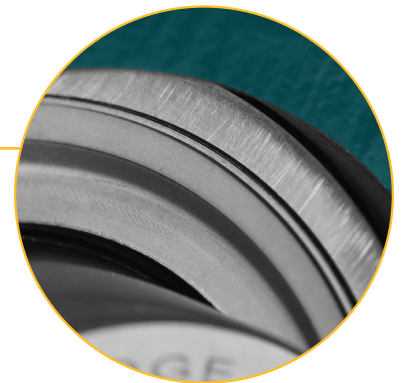
For additional information, visit dodgeindustrial.com/first-fit-promise

**FIRST-FIT
PROMISE**

OPTIFY Intelli-Lube®-compatible for hands-free, automatic, connected lubrication



Mechanically retained, single-lip seal prevents seal blowout and contamination



Capable of +/- two degrees static misalignment

Low backing height pillow block option available

Dimensionally interchangeable design

Available in bore sizes ranging from 1-7/16 inches to 3-15/16 inches

Pre-assembled and pre-lubricated for shaft-ready installation out of the box



PTPlace

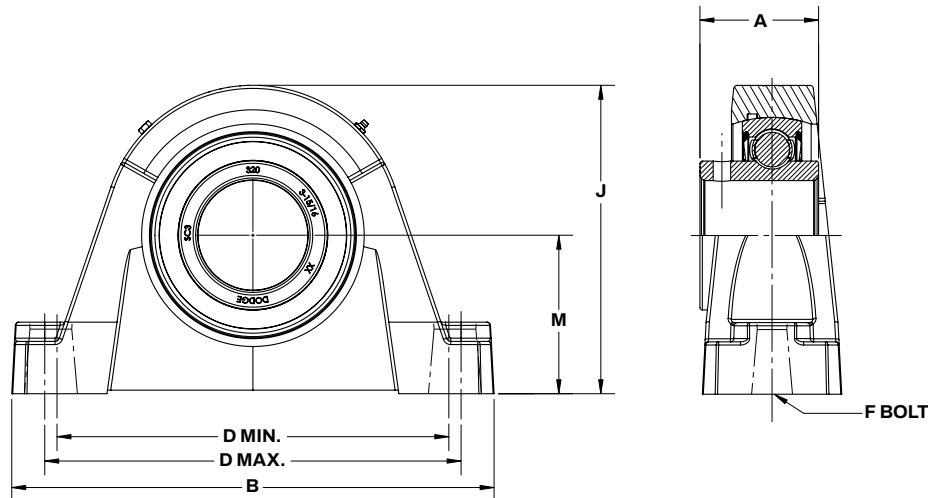
For additional product information, visit dodge.ptplace.com



PTWizard

For product selection, interchange information, and grease calculator tools visit ptwizard.com

Dimensions and interchanges



Standard 2-bolt pillow block drop-in replacement for Link-Belt PU (set screw)

Series	Dodge										Link-Belt
	Bore (in)	Part Number	Description	A	B	D		F Bolt dia.	J	M	Part number
						Min.	Max.				
307	1-7/16	123078	P2B-SC3-107	1.89	9.25	6.93	7.82	5/8	4.72	2.37	PU323
309	1-11/16	123079	P2B-SC3-111	2.24	10.25	7.81	8.70	5/8	5.62	2.87	PU327
310	1-15/16	123080	P2B-SC3-115	2.40	11.12	8.31	9.20	5/8	6.22	3.12	PU331
311	2-3/16	123081	P2B-SC3-203	2.60	12.62	9.82	10.68	3/4	6.81	3.50	PU335
312	2-7/16	123082	P2B-SC3-207	2.80	13.75	10.70	11.81	3/4	7.18	3.62	PU339
314	2-11/16	123083	P2B-SC3-211	3.07	14.63	11.13	12.50	7/8	7.94	4.00	PU343
315	2-15/16	123084	P2B-SC3-215	3.23	15.12	11.05	12.43	7/8	8.38	4.25	PU347
318	3-7/16	123085	P2B-SC3-307	3.78	16.12	12.31	13.44	1	10.06	5.12	PU355
320	3-15/16	123086	P2B-SC3-315	4.25	17.31	14.06	14.94	1	11.07	5.69	PU363

Low backing height 2-bolt pillow block drop-in replacement for Timken Fafnir RAO (eccentric collar)

Series	Dodge										Timken
	Bore (in)	Part Number	Description	A	B	D		F Bolt dia.	J	M	Part number
						Min.	Max.				
307	1-7/16	123087	P2B-SC3B-107	1.89	7.56	5.81	6.25	1/2	4.28	2.12	RAO1-7/16
309	1-11/16	123088	P2B-SC3B-111	2.24	9.43	7.19	7.83	5/8	5.25	2.62	RAO1-11/16
310	1-15/16	123089	P2B-SC3B-115	2.40	10.43	7.94	8.58	5/8	5.56	2.81	RAO1-15/16
311	2-3/16	123090	P2B-SC3B-203	2.60	11.31	8.70	9.30	3/4	6.15	3.06	RAO2-3/16
312	2-7/16	123091	P2B-SC3B-207	2.80	12.31	9.45	10.06	3/4	6.62	3.31	RAO2-7/16
314	2-11/16	123092	P2B-SC3B-211	3.07	14.19	10.87	11.63	7/8	7.75	3.81	RAO2-11/16
315	2-15/16	123093	P2B-SC3B-215	3.23	15.12	11.62	12.38	7/8	8.06	4.12	RAO2-15/16

© Copyright Dodge Industrial, Inc. All rights reserved. Specifications subject to change without notice.
An RBC Bearings company.

Link-Belt, Timken, and Fafnir are trademarks or trade names of their respective owners, their affiliates, or subsidiaries. Dodge Industrial is not affiliated with, sponsored by, or endorsed by Regal Rexnord Corporation, The Timken Company, or any other trademark owner referenced herein. Any use of third-party trademarks is solely for purposes of identifying the products of those companies and does not imply any association with Dodge Industrial. All other names, marks, and trade names used are the property of their respective owners and are used only to identify their products or entities. No claim of ownership, affiliation, or endorsement is intended or implied.